

The Delta Alliance logo features the word "Delta" in white and "Alliance" in blue, with a stylized blue 'A' that incorporates a white triangle. The background is a vibrant, abstract pattern of green and blue, resembling a map of river deltas.

Delta Alliance



Managing the World's Deltas: Unique Systems, Unique Challenges

**Report from the Delta workshop held at the
GWP Consulting Partner Meeting, 26 August 2012**

Kees Slingerland, Director Delta Alliance

2012 World Water Week, 26-31 August 2012
Stockholm, Sweden

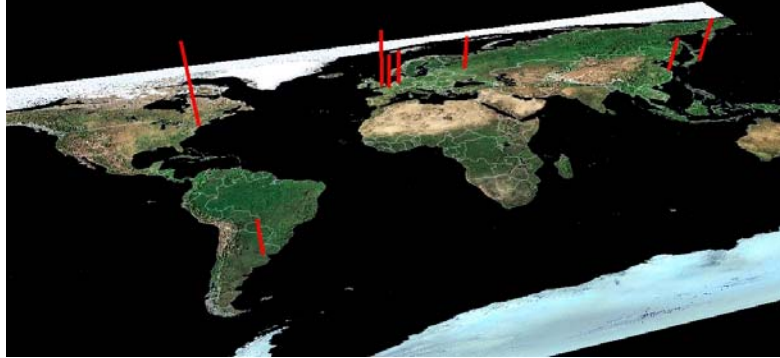
The Delta Alliance logo features the word "Delta" in white and "Alliance" in blue, with a stylized blue 'A' that incorporates a white triangle. The background is a vibrant, abstract pattern of green and blue, resembling a map of river deltas.

Delta Alliance



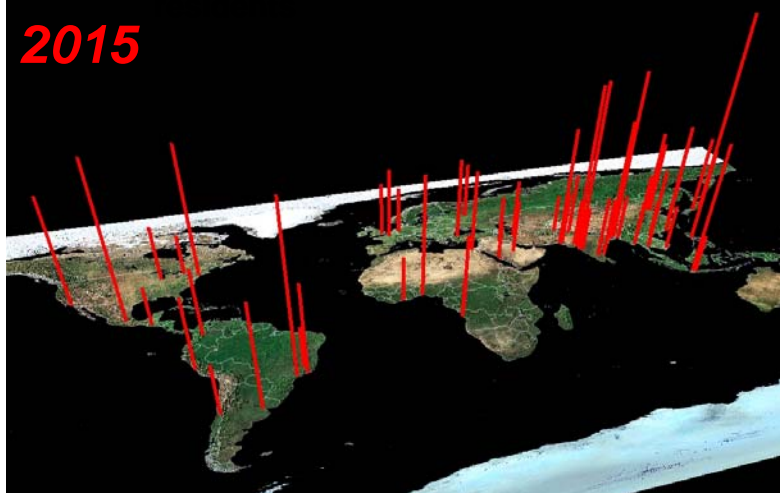
World Cities exceeding 5 million

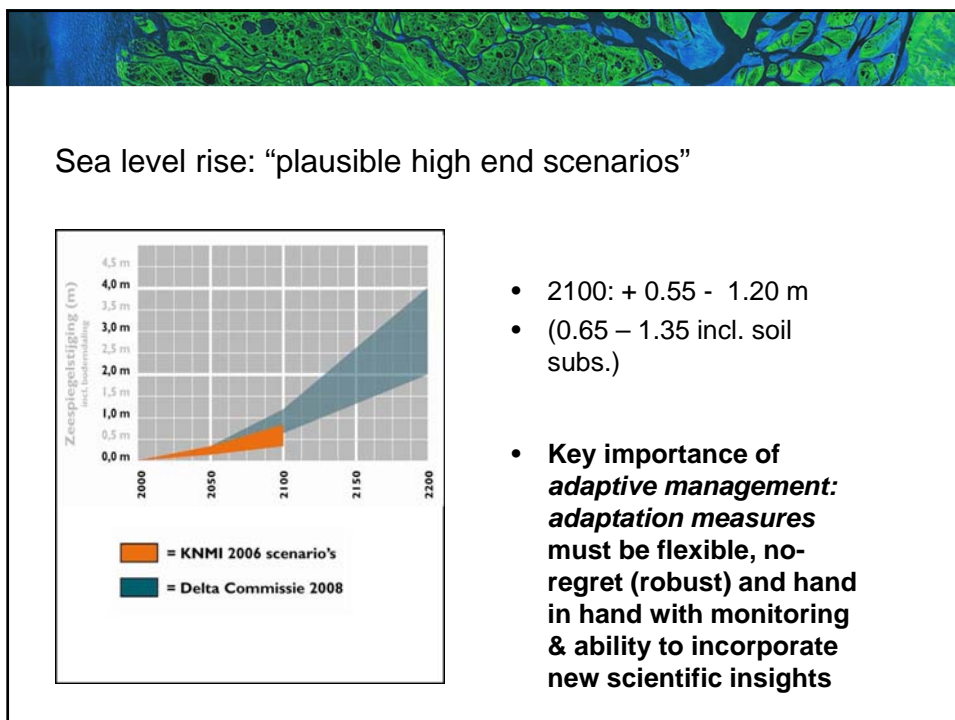
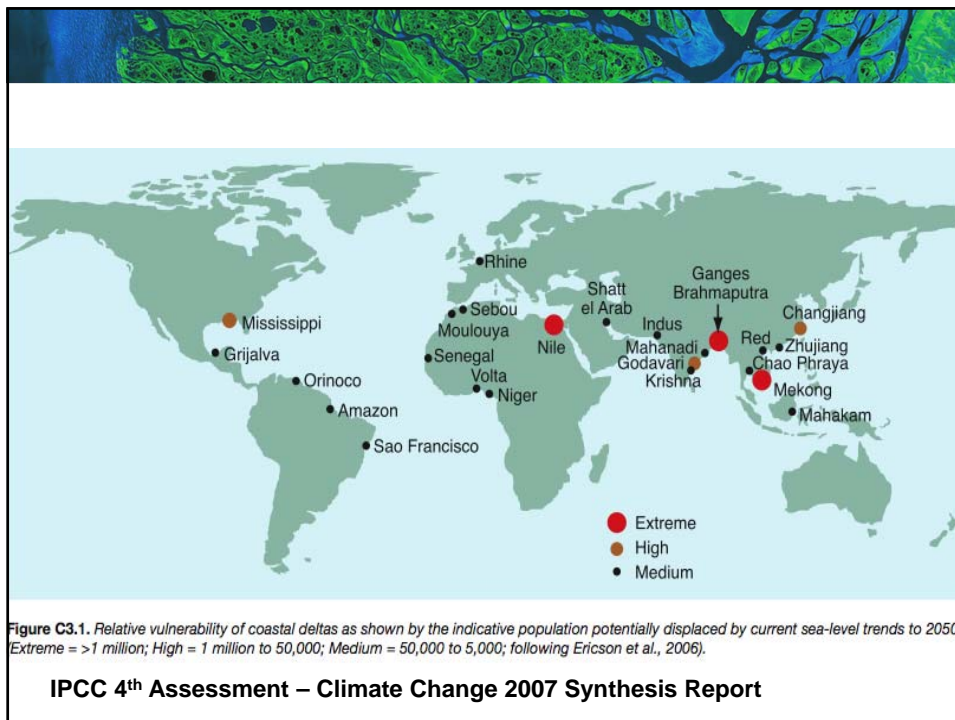
1950

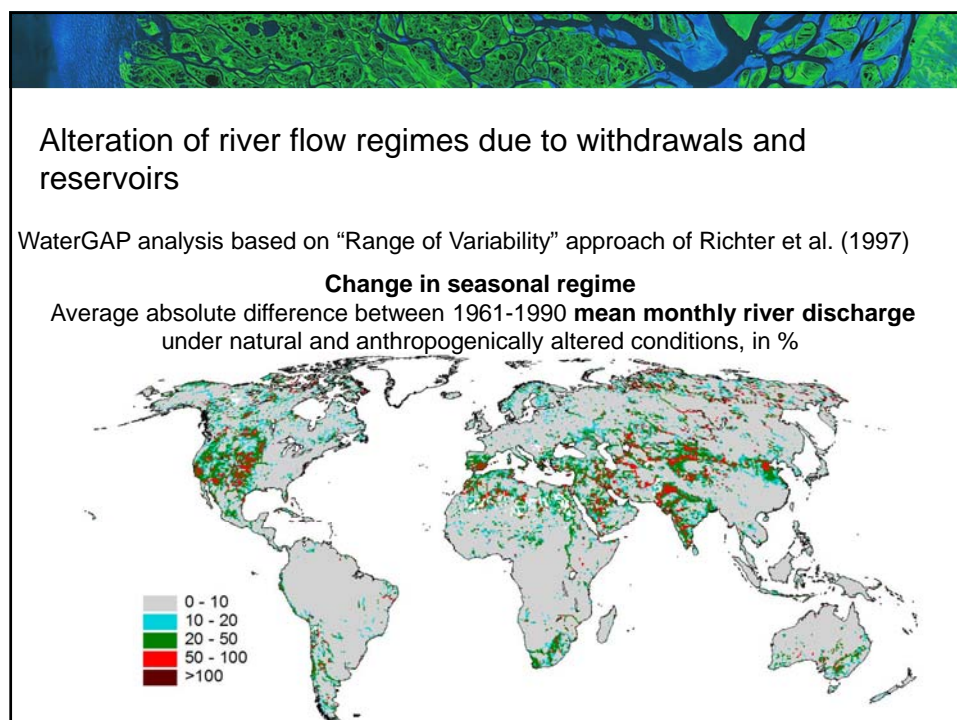
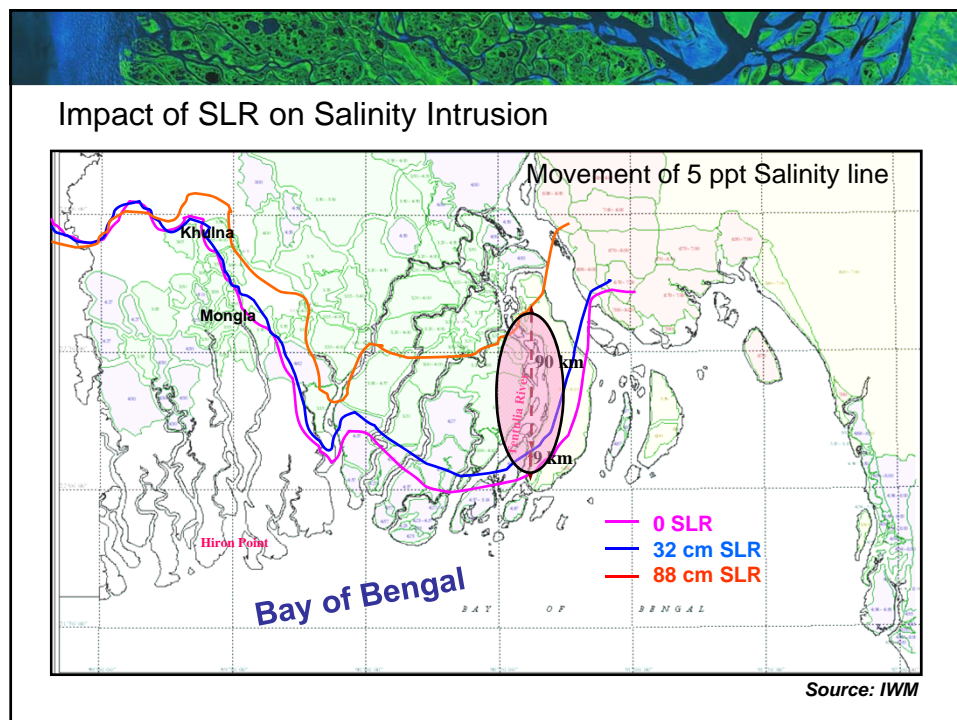


World Cities exceeding 5 million

2015

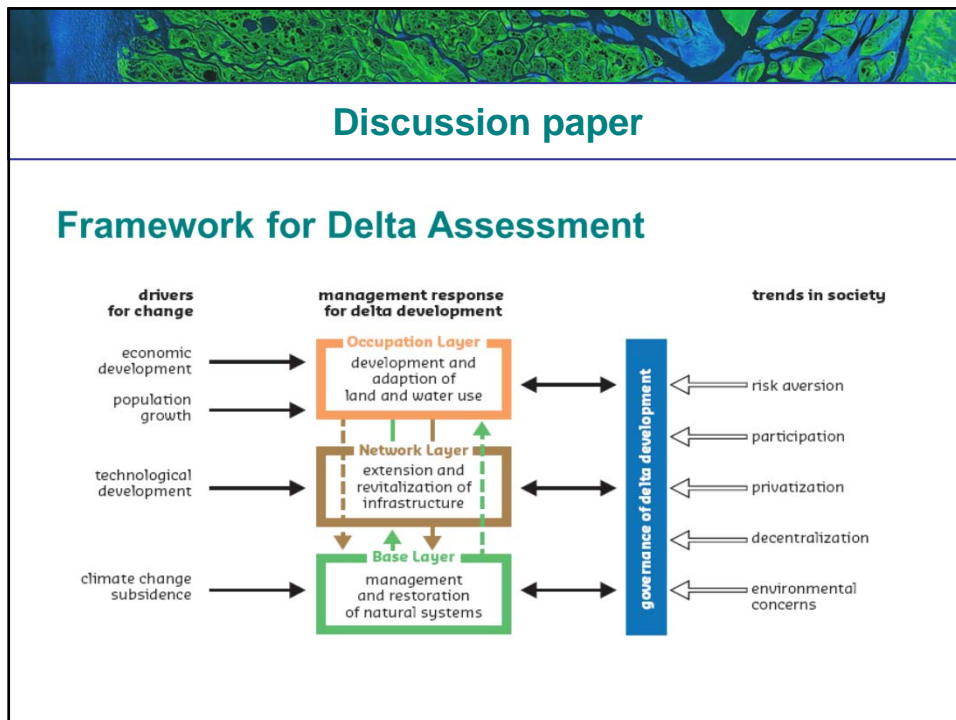
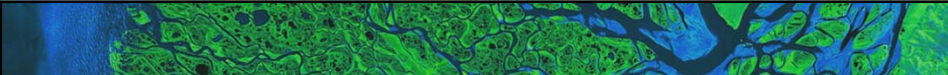








<h3>Ten reasons why deltas need attention in IWM</h3>	
<ol style="list-style-type: none"> 1. High population density 2. Rapid urbanization 3. High economic and agricultural activities 4. High-value ecosystem 5. Dynamic geomorphological processes 6. Sediment starvation, soft soils and subsidence 7. Fossil fuel and groundwater exploitation 8. Water pollution 9. Flood hazards 10. Seawater intrusion 	<p>An aerial photograph showing a complex river delta system with multiple channels and distributaries flowing into a body of water. The land is green, and the water is dark blue.</p>


Discussion paper

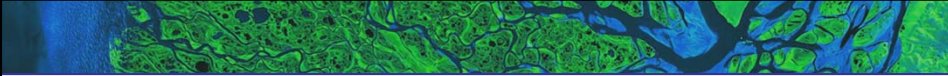
Case studies

- Ganges-Brahmaputra (Bangladesh)
- Oeme and So (Benin)
- Mekong (Cambodia)
- Pearl (China)
- Nile (Egypt)
- Mekong (Vietnam)
- Chao Phraya (Thailand)
- Several delta's in Indonesia

Input

- Results electronic platform
- Contribution from the deltas

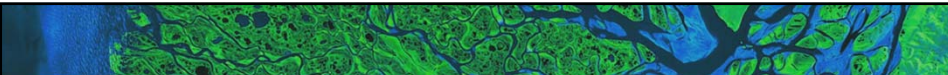





Discussion paper


Conclusions

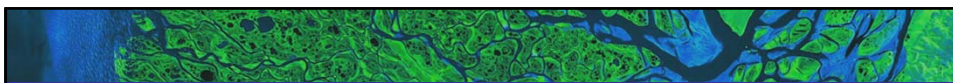
- Sustainable solutions to delta problems require integrated analysis of the three delta 'layers': (1) land use, (2) infrastructure and (3) physical environment
- *Framework for Delta Assessment* is a useful tool for integrated analysis of delta management
- Governance of delta should involve stakeholders from the three delta layers and acknowledge their different responsibilities
- Population growth, urbanization and subsidence are the most urgent delta issues



Consulting Partners meeting

- Urgency: vulnerable, threatened, valuable
- Deltas are not stand alone: relation with the basin
- Governance is crucial: transboundary, national, local
- Manage risks – make choices
- Not only water: holistic integrated approach (incl IWRM)
- Deltas comprise social and cultural values (*delta identity*)
- Delta development approach needs vision and political reality
- We need on the ground action on the basis of sound assessments and analyses!





Delta Alliance and GWP join forces on Deltas

- **The Global Water Partnership is an action network of practitioners in the field of Integrated Water Resources Management**
- **Delta Alliance acts as a worldwide, knowledge driven network between people and organisations dealing with delta issues**
- **Jointly they will assist countries to improve delta management and development**



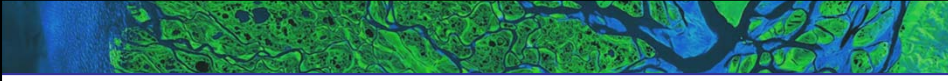
Delta Alliance and GWP join forces on Deltas

The proces towards a Global program “Enabling Delta Life”


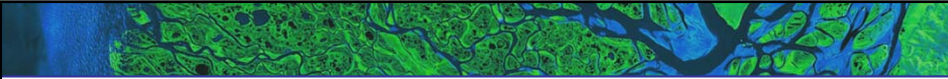
- Meetings enabled by the Dutch Ministry of Foreign Affairs
- Electronic discussion platform: “What makes water and land management in Deltas different”
- Draft Discussion Paper “Enabling Delta Life”
- Delta Session during GWP Consulting Partners meeting

And from here...

- (Current) Deltas Session during Stockholm WWW
- Finalisation discussion paper
- Perspective Paper by TEC of GWP on Deltas (2012/2013)



Way forward (Process)
<p>Plan of action:</p> <ul style="list-style-type: none"> • GWP Technical Commission (TEC) develops agenda for technical leadership for a global program <i>Enabling Delta Life</i> • GWP and Delta Alliance networks join forces to attack the many challenges in Deltas to improve the resilience of deltas' • Identification of a targeted program on specific issues to complement ongoing activities in selected deltas.

Way forward (Content)
<p>Potential options</p> <ul style="list-style-type: none"> • '<i>Comparative assessment of the vulnerability and resilience of deltas</i>' applied in deltas with strong GWP interest • Application of the IWRM toolbox of GWP in the field: Deltas are ideal hotspots for integrated approach • Joint development of a framework for sustainable planning based on IWRM • Research and capacity building on thematic issues: flooding, water reuse, salinity intrusion, integrated planning, sedimentation, ...

