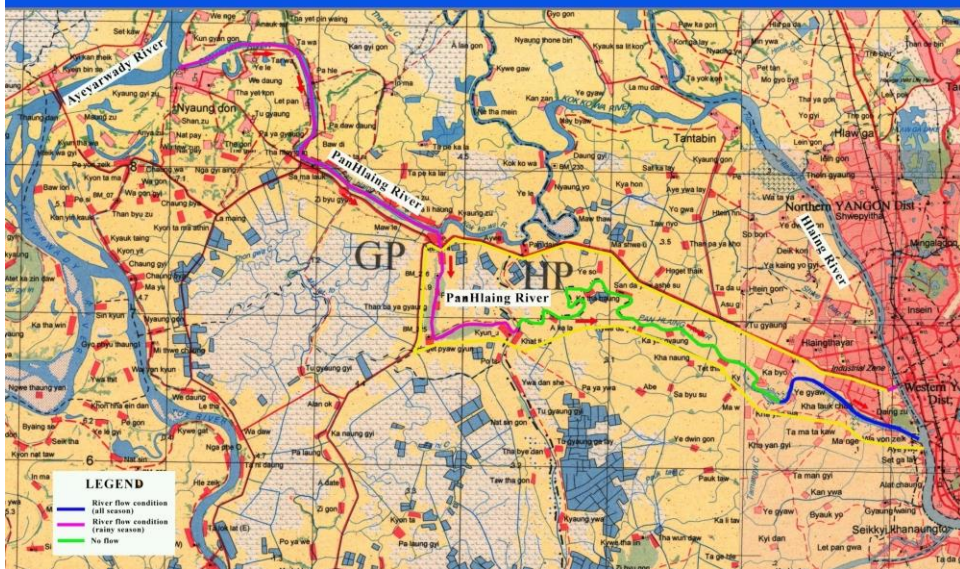


□ Background Information

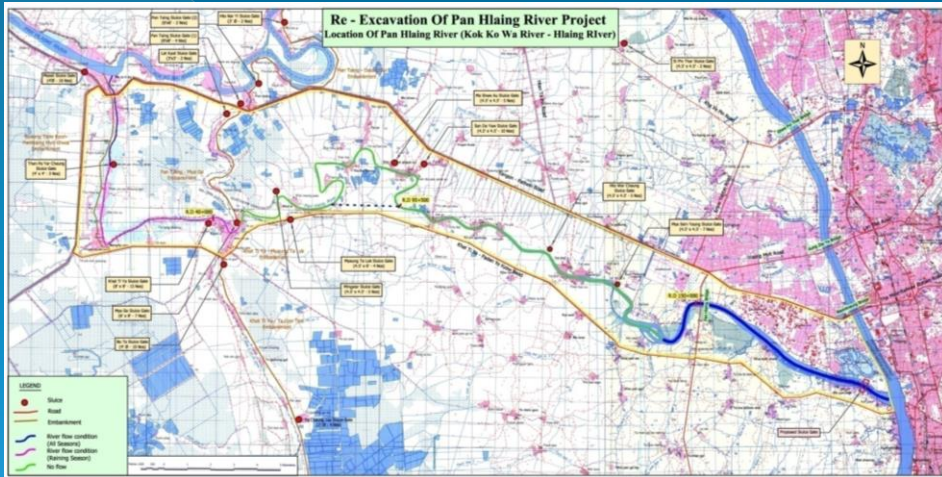
- PanHlaing River is one of the main tributary of Ayeyarwady River and flows into Hlaing River near the Yangon City.
- The main function of PanHlaing River is contributed as drainage channel in flood season and also used for navigation all year round.
- In the past decades, functions of PanHlaing River is deviated due to siltation in the main course.
- The length of PanHlaing River from junction with Kokkowa River to the mouth is about 34 miles (54.7 km) and it can use only 10 miles (16.1 km) for navigation at present.
- Resaturation (Re-excavation) Project will be initiated and setup the plan for development of PanHlaing River including it's surrounding.
- PanHlaing Sluice Gates construction is one of the infrastructure development.

Location of PanHlaing River (Ayeyarwady River - Hlaing River)

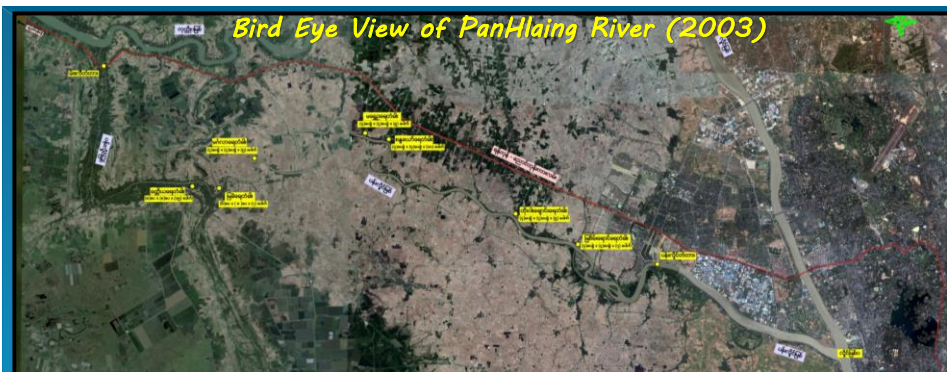


Total length of PanHlaing River to be resaturated (re-excavated): 54.7 km

Resaturation of PanHlaing River Project Location of PanHlaing River (Kokkowa River - Hlaing River)



Total length of PanHlaing River to be resaturated (re-excavated):
34 miles (54.7 km)



□ Objectives of the Project

- To achieve the original channel morphology of PanHlaing River especially in the manner of drainage purpose and navigation
- To supply the fresh water for agricultural development scheme and Industrial zone
- To prevent the sea water intrusion (saline water) and siltation problem
- To establish the agricultural production zone targeted for rural area development



□ Benefits of the Project (For Agriculture)

Total Flood Protected Land Area 48,065 hectares

Total Flood Protected Crop Area 44,778 hectares

In Ayeyarwady Region

NyaungDon Township

- Flood Protected Land Area 7,614 hectares
- Flood Protected Crop Area 6,096 hectares

In Yangon Region

TwanTe Township

- Flood Protected Land Area 30,623 hectares
- Flood Protected Crop Area 30,212 hectares

HtanTabin Township

- Flood Protected Land Area 9,828 hectares
- Flood Protected Crop Area 8,470 hectares



□ *Current Works Undertaken*

*Topographic Area Survey
Hydrological Investigation & Analysis
Geological Investigation
Socio-economic Survey*



□ *Technical Assistances and Deliverables*

*Identification / Scoping
Formulation Concept
Viability
Comments and Recommendations
Final Design
Financing Option*



□ *Conclusions*

- *Irrigation Water Supply, Drainage and Flood Protection for Land and Crop Areas*
- *Fresh Water Supply for Possible Expansion of the Urbanized Area of Yangon City*
- *Navigation*
- *Better Socio-economic, Trading and Transportation Conditions for Local Rural Communities*



Thank You for Your Kind Attention

