

MEKONG DELTA DEVELOPMENT: ADAPTIVE MANAGEMENT APPROACH

Ho Long Phi, Director

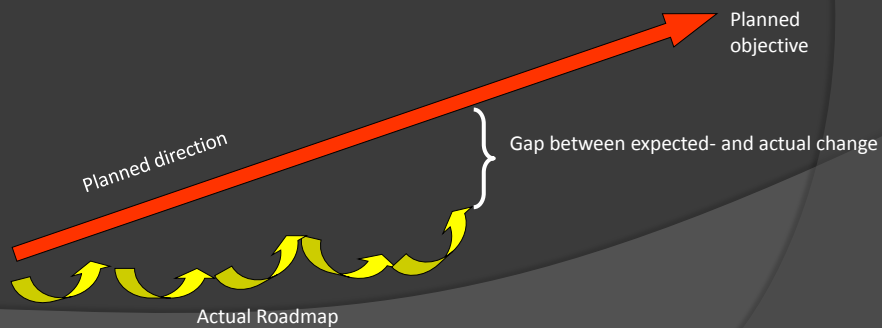
WACC
Viet Nam National University Ho Chi Minh City

Deltas in time of Climate Change II
Rotterdam, 24-26 SEP 2014

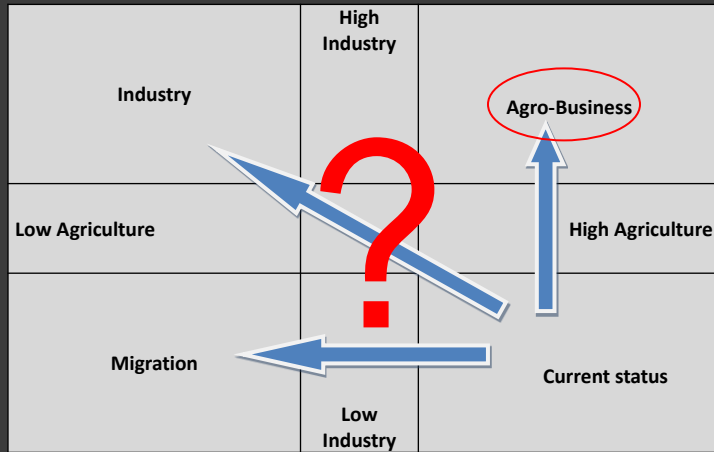
1

From Plan to Reality

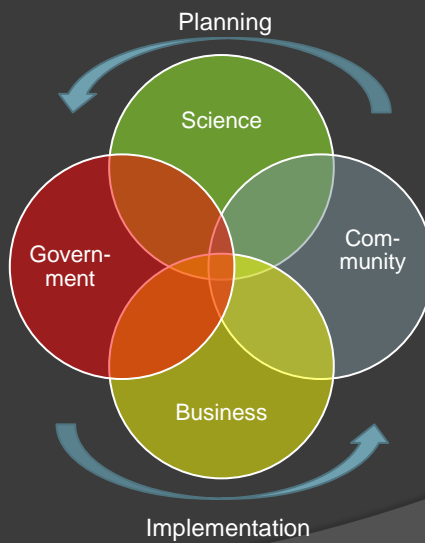
- Long term Planning mainly bases on “what we want it to be”;
- Feasible roadmap has to built on **Actual environment and available Ability**;
- **Multi-actor complexity** and
- **Uncertain/random factors** may result in **gaps between plan and implementation**.



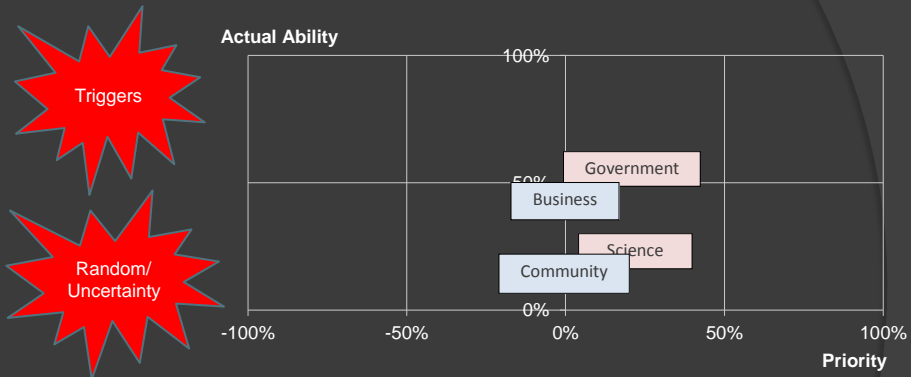
Development scenarios?



4 Actor groups



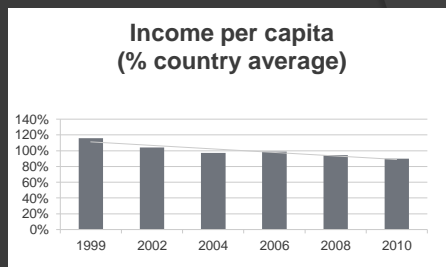
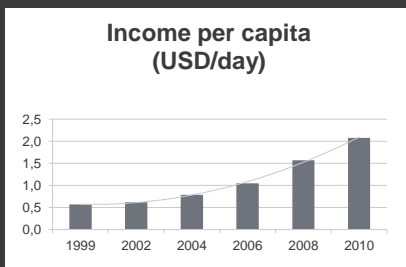
Stakeholder dynamic:



The stakeholder behaviors are estimated based on 300 samples of limited social surveys at Tra Vinh, An Giang and Can Tho (2013). The investigations are still going on.

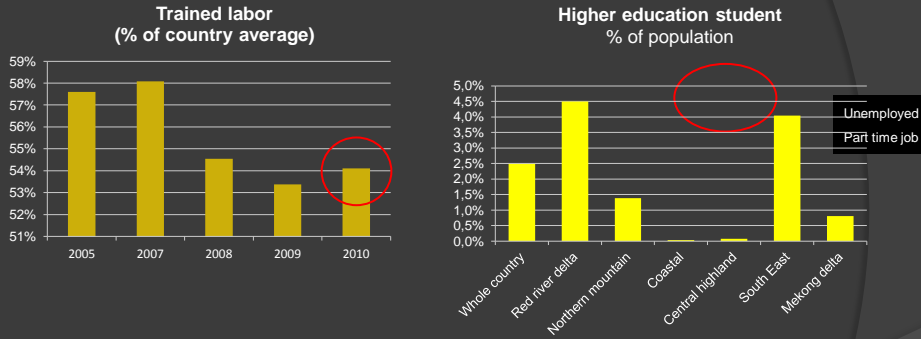
5

MKD baseline: Livelihood



- Having reached Millennium Development Goal in 2006, MKD's growth rate of income is below the country average, resulted in **worsened livelihood**.

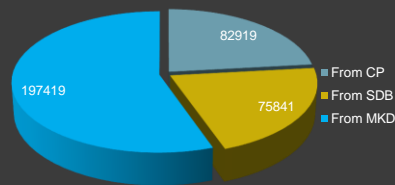
MKD base line: human resource



Source: processed by the Author from GSO data

MKD baseline: Migration

Migration to HCM 2009



Source: GSO 2010

During the year 2004-2009, there have been about 370.000 migrants leaving MKD, in which 60% found their new home in HCMC.

Perception for CCA?



and here's what the experts NOW say

<p>Global surface temperatures have not risen in 15 years. They make the high estimates unlikely</p> <p>PIERS FORSTER Climate Change Professor, Leeds University</p>	<p>This changes everything. Global warming should no longer be the main determinant of economic or energy policy</p> <p>DR DAVID WHITEHOUSE Global Warming Policy Foundation</p>	<p>Climate models are running too hot... current flat trend may continue for two more decades</p> <p>PROF JUDITH CURRY Georgia Institute of Technology</p>
---	---	---

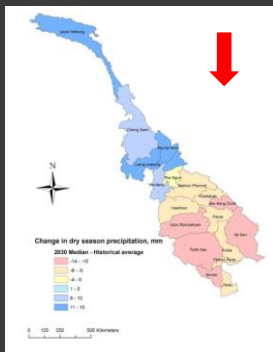
People:
not (yet) my priority

Government:
We should start to do something anyway. Just assume the medium scenario.

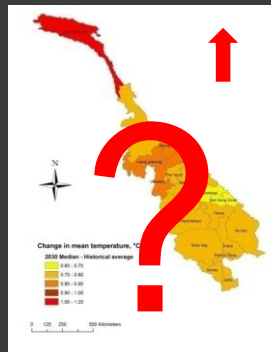
Business:
Be careful. Just do something small and short term.

Science:
It COULD be too dangerous and complicated.

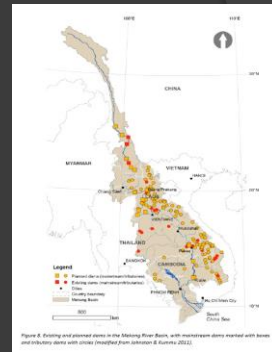
Uncertainty: Upstream



Lower precipitation

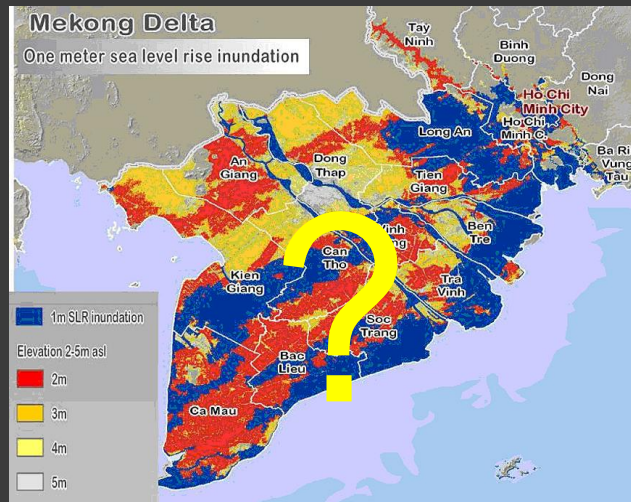


Higher Temperature



Higher water demand

Uncertainty: Sea level rise



Change we can?

- Change is not just **WHAT WE WANT** but also **WHAT WE CAN** under deep **Uncertainties**.



Adaptive development

Adaptive development =
Adapt to people + Adapt to nature

Adaptive management =
Affordable action steps toward long-term
vision under uncertainty

13

What to do?

- ⦿ To translate the long term plan into short termed actions.
 - To avoid unexpected triggers
 - To reduce uncertainty
 - To guaranty Hard resources (Financial and Technical)
 - Better assessment Multi-actor Motivation and Ability toward the options.
- ⦿ To identify weaknesses and building soft capacities (Institutional and Social) for next steps.
- ⦿ To adjust/adapt next steps with new insights.
- ⦿ Multi-layered and multi-sector for more flexible and adaptable. (Put your eggs in some baskets).

14

Conclusions

- ⦿ Stakeholder's MOTA and uncertainties make "one time intervention" risky.
- ⦿ Bigger or earlier may be not always better.
- ⦿ Stepwise interventions following a long-term vision to for uncertainty and limited resources.

Thank you