



Gothenburg

- Founded in 1621
- Second largest city in Sweden more than 500,000 inhabitants
- Administrative capital of the County of Västra Götaland



Göteborgs Stad
Stadsbyggnadskontoret

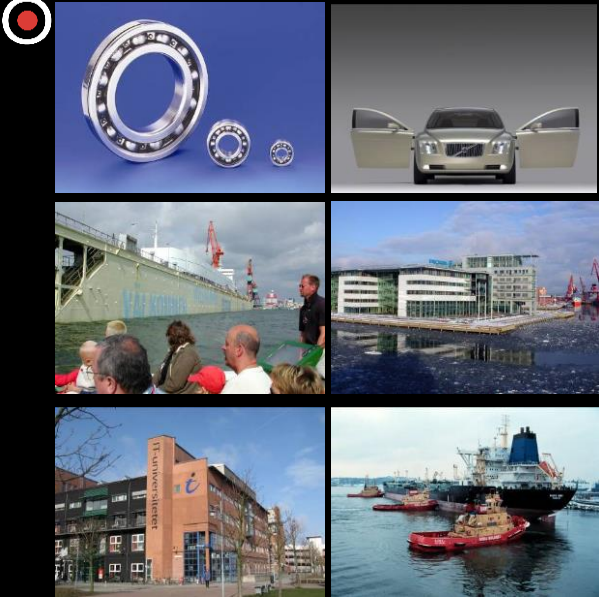


Business traditions

- Long tradition of international trade and industry
- Swedish East India Company
- World leading in shipping industry




Göteborgs Stad
Stadsbyggnadskontoret



Business today

- SKF, Volvo, Ericsson, Astra Zeneca
- From dockyards to science park
- Triple-Helix model (Business, Research, Municipality)
- Port of Göteborg – Scandinavia's largest port and logistical centre

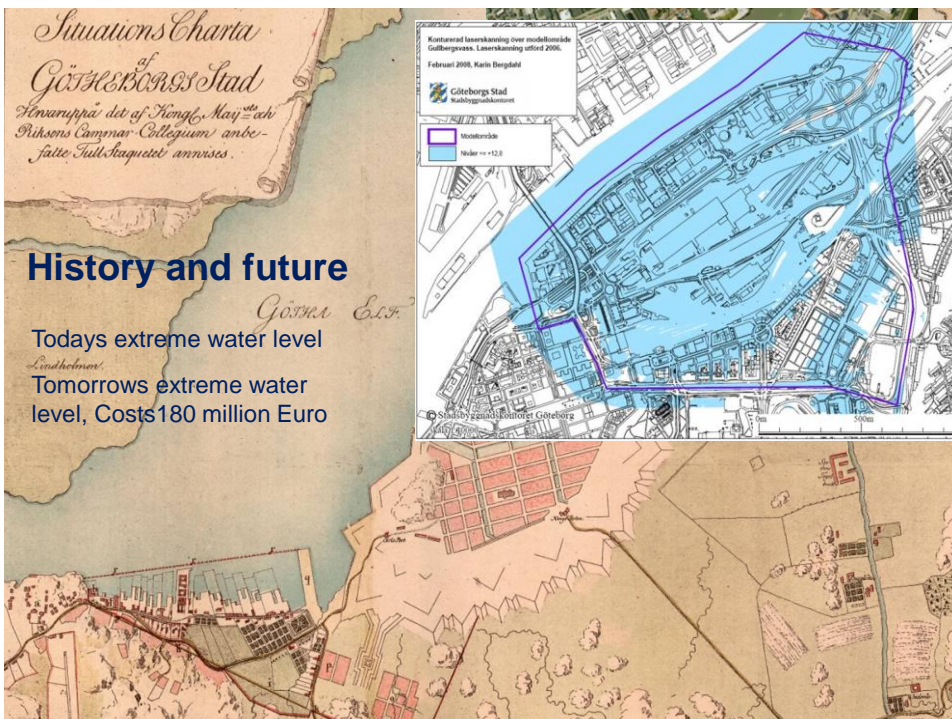
 Göteborgs Stad
Stadsbyggnadskontoret

History and future

Situations Charta of Göteborgs Stad
Hövarupå det af Kongl. Maj:tes Rikens Cammar-Collegium anbefatte Sittskapskrets anvisas.

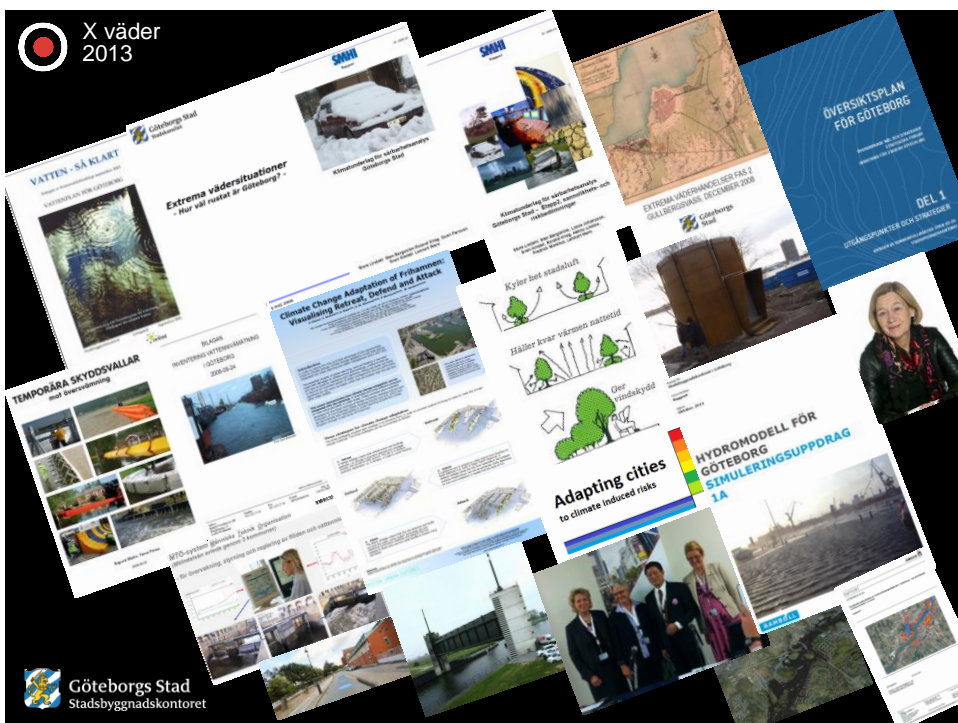
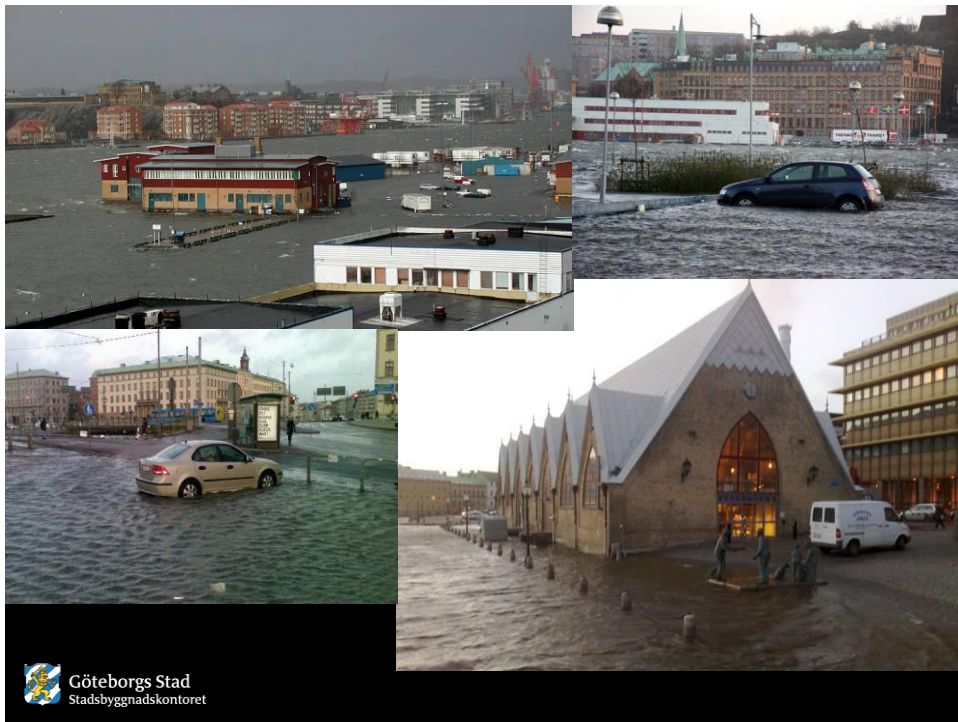
Göteborgs Stads

Today's extreme water level
Tomorrow's extreme water level, Costs 180 million Euro



Kontorstadens utveckling över tid
Göteborgs stad, Länsstyrelsen 2010
Februari 2010, Karin Bergström
Göteborgs Stad
Stadsbyggnadskontoret

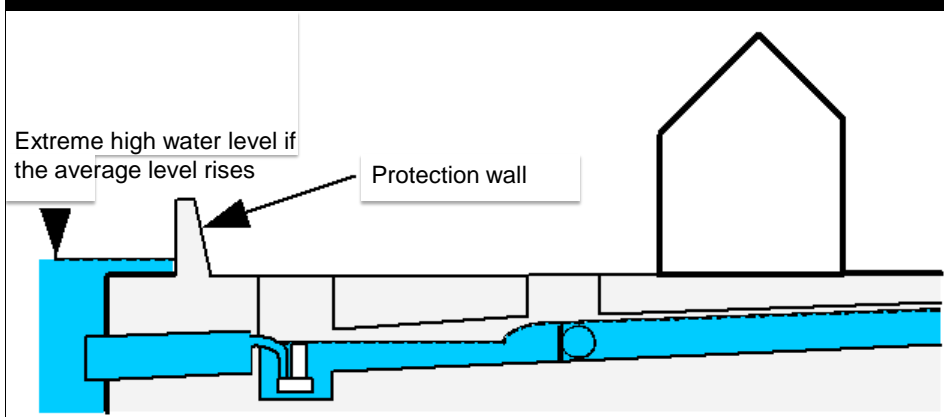
Montevide
Hövarupå (+12.0)



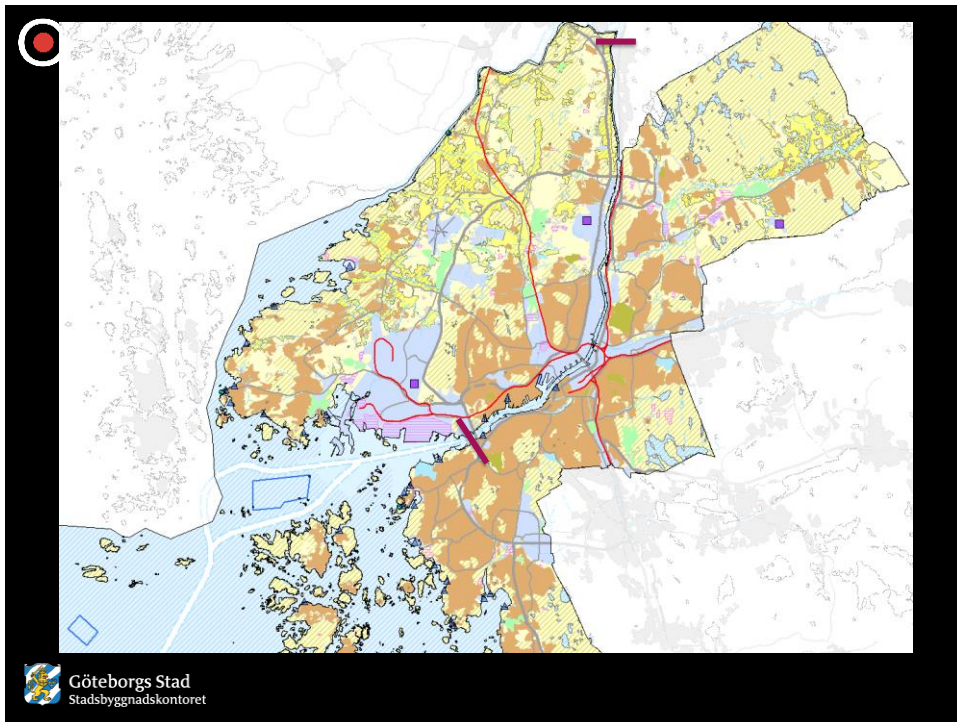
Frequency and possibility

Frequency Year	Constructions calculated life expectancy Year				
	50	100	200	300	400
50	64	87	98	100	100
100	39	63	87	95	98
500	10	18	33	45	55
1 000	5	9,5	18	26	33
10 000	0,5	1	2	3	4

Shelter at the river side









Göteborgs Stad
Stadsbyggnadskontoret

Object
protection or
protection of
smaller areas

Sketch MCA shelters	Big scale shelter	Riverside shelter	Object shelter
Function when activated	2	1	2
Shelter Level	2	2	2
Environment issues, EIA	-2	-1	0
Process for decision	-2	-1	0
Esthetics	1	-2	-1
Costs investment and management	-2	-2	-2
Potential benefits land use exploitation possibilities Positive influence area	2	1	0
Accessibility technique, human, organisation	2	-1	-1
Flexible, adaptation new circumstances	1	1	2
Technical Life expectancy	2	1	1
Opinion	-1	-2	0
Traffic, Impact on accessibility and mobility	+1	+1	-1
Damage in insufficient function	-2	-1	0
National interest			
Traffic on land	2	1	0
Traffic on water	-1	0	0
Culture	1	-2	-1
Nature	-2	-1	0
Summary	2	-6	1

Remain sensitive analysis and importance



Göteborgs Stad
Stadsbyggnadskontoret



Challenges

- *Material for decision
- *If we recommend large scale shelter what shall we do before it is on place
- *Double safety
- *Communication

Legislation
Financing
Organization
Level for decision

 Göteborgs Stad
Stadsbyggnadskontoret



Thank you
ulf.moback@sbk.goteborg.se

 Göteborgs Stad
Stadsbyggnadskontoret