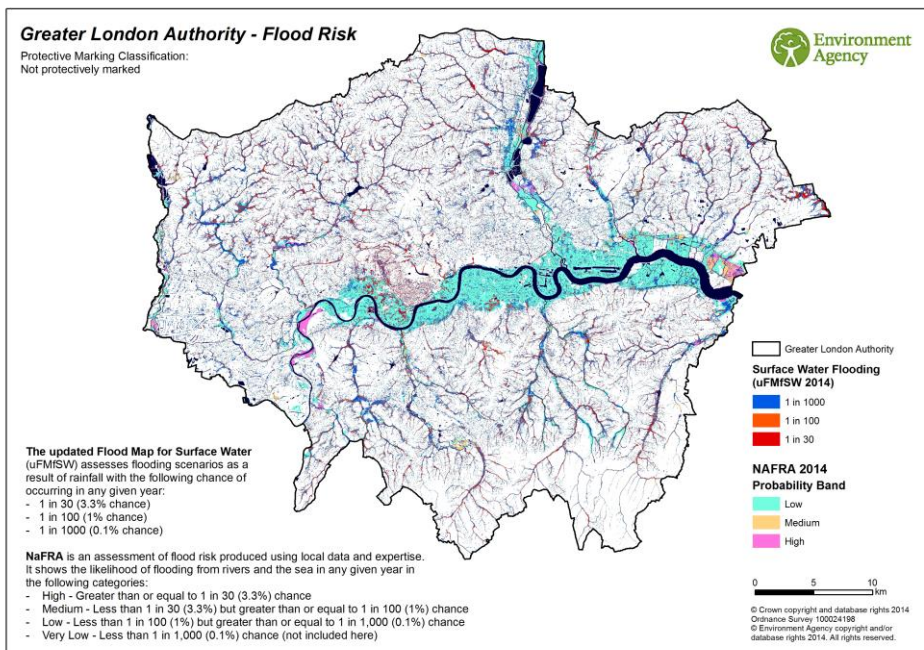


A transition in managing surface water flood risk in London

Session D.P 2.5
Resilient cities
talk

Alex Nickson

GREATER LONDON AUTHORITY



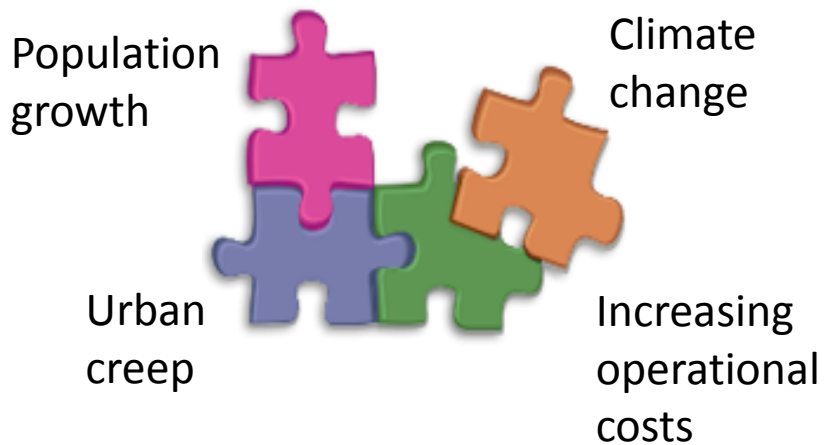
MAKING THE CASE FOR ACTION

5 Tasks

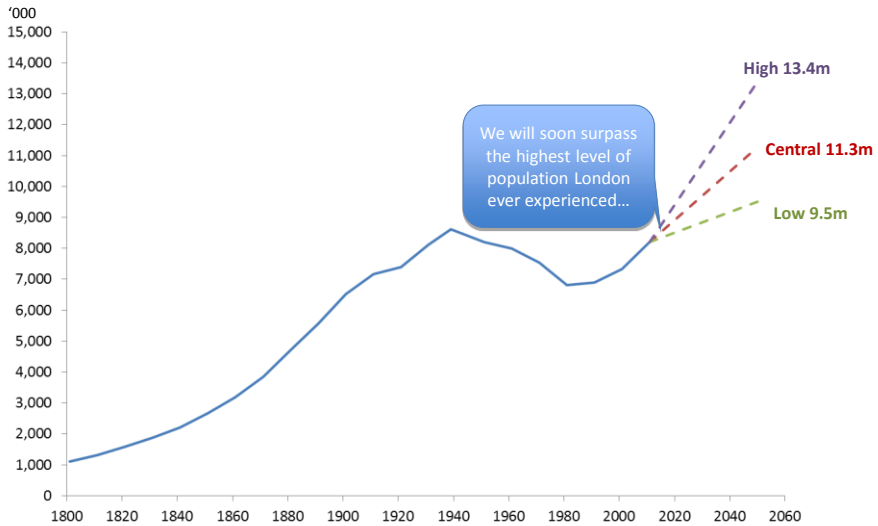
1. Predict 'headroom' today
2. Understand future challenges
3. Predict future headroom
4. Quantify future challenge
5. Prioritise locations for action



UNDERSTANDING FUTURE CHALLENGES



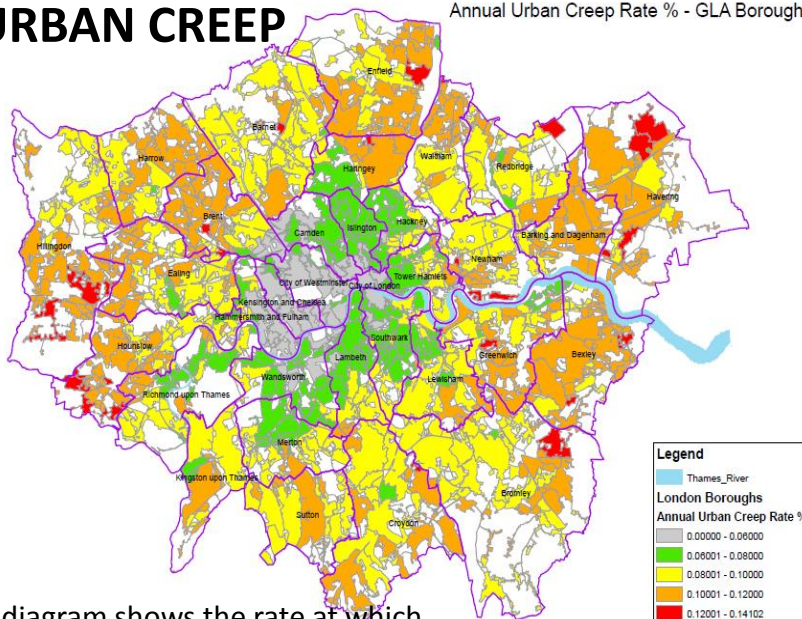
POPULATION GROWTH



Source: GLA Economics

URBAN CREEP

Annual Urban Creep Rate % - GLA Boroughs

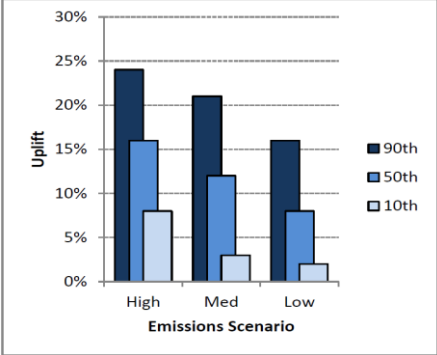


The diagram shows the rate at which permeable area is being lost in London

Source: Thames Water

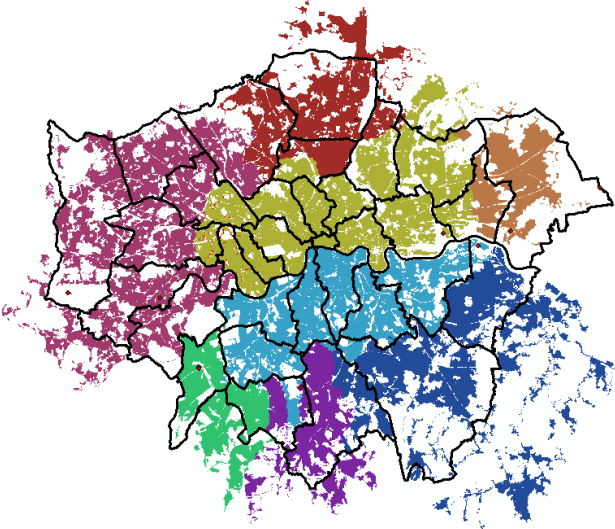
CLIMATE CHANGE

- Climate change will mean that London is likely to experience wetter winters and more frequent and extreme rainfall events
- We have projected future rainfall scenarios looking at high, medium and low emissions scenarios for 2020, 2050 and 2080, using 90th, 50th, and 10th percentiles



Source: Thames Water

Context: London’s sewerage catchments

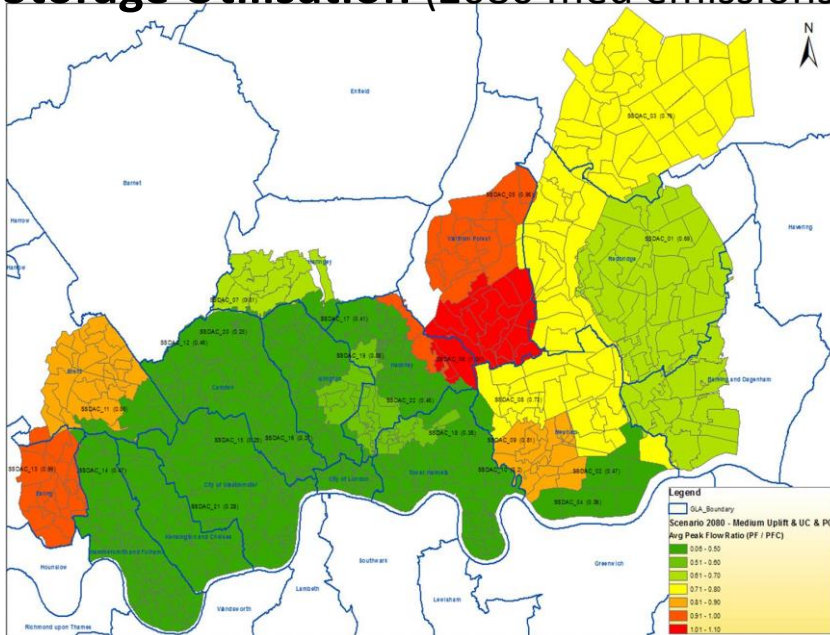


33 London Boroughs
8 Sewage Treatment Works Catchments
897 Sub catchments

- Legend**
LONDON_CATCHMENTS
STW
- BECKTON
 - BEDDINGTON
 - CROSSNESS
 - DEEPHAMS
 - HOGSMILL
 - LONGREACH
 - MOGDEN
 - RIVERSIDE

Source: Thames Water

Storage Utilisation (2080 med emissions)



Next steps

- SuDS opportunities mapping
- Develop sectors-specific guidance (transport, housing, schools, commercial etc)
- Identify mainstreaming opportunities in each sector → demonstration case studies
- Investigate business case for charging for surface water run off
- Investigate offsetting where SuDS are

THANK YOU

alex.nickson@london.gov.uk

+44 (0)20 7983 4322