



## Geodesign tools for regional adaptation planning

Tessa Eikelboom, Ron Janssen

 **IVM** Institute for  
Environmental Studies



### Adaptation cycle and tasks

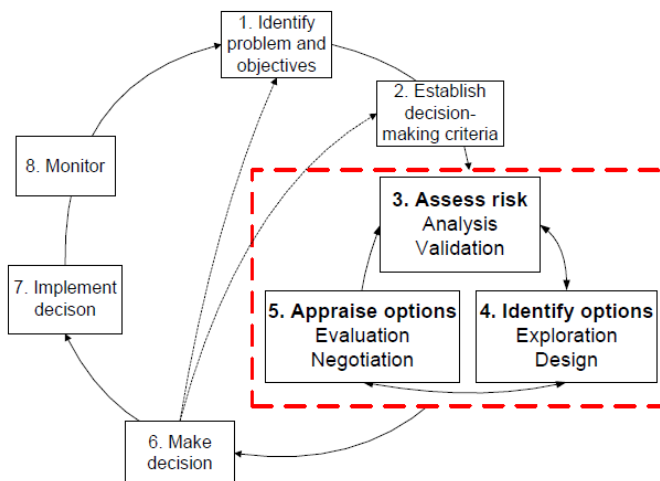


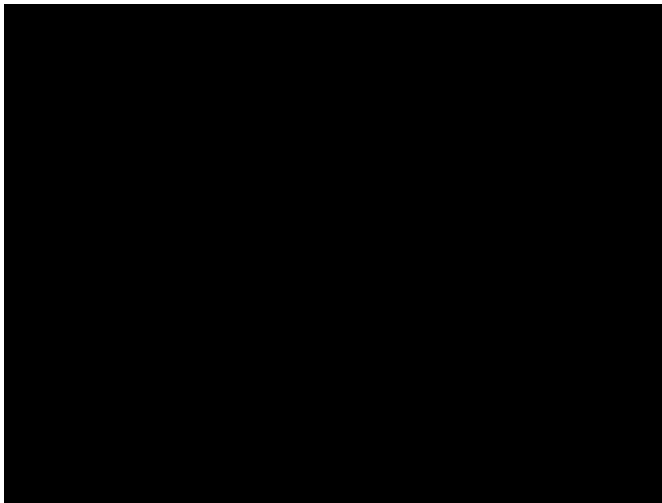
Figure 1. Adaptation framework based on Willows and Connell (2003)

## Research Question

- How can stakeholder interests be combined with physical relations to support interactive spatial planning?



## Interactive geodesign



## Experimental workshops (n=14)



Researchers table 1



Researchers Table 2



Planners Table 1



Planners Table 2

## Online survey (n=49)

[SURVEY PREVIEW MODE] SurveyMonkey Powered Online Survey - Microsoft Internet Explorer provided by IVM

Dear respondent,

Thanks for participating in this study. This online survey is part of my PhD research from the program 'Knowledge for Climate'. The aim is to develop interactive support tools for spatial planning. These tools will be applied in interactive workshops (see photo).

Thanks for your contribution!

Sincerely,  
Tessa Eikelboom

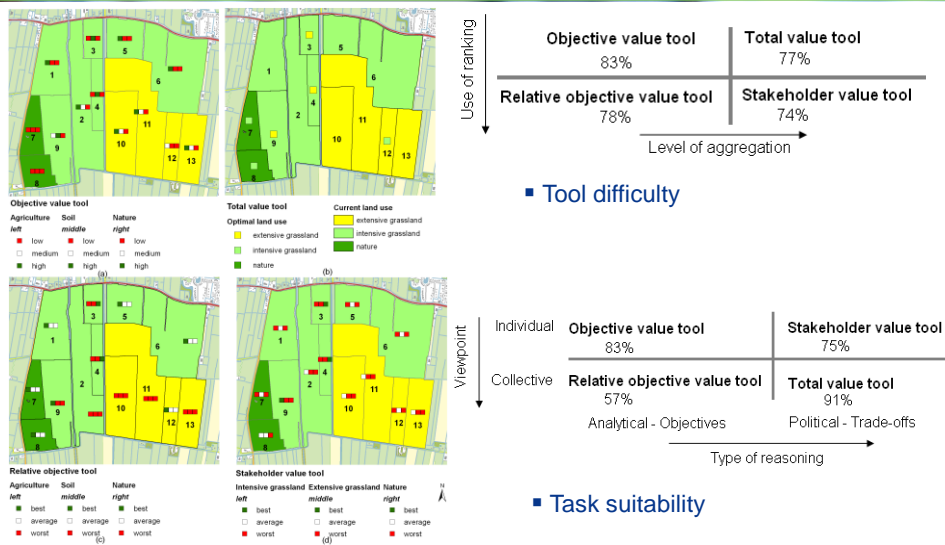
1. Name (optional)

\*2. Experience with maps

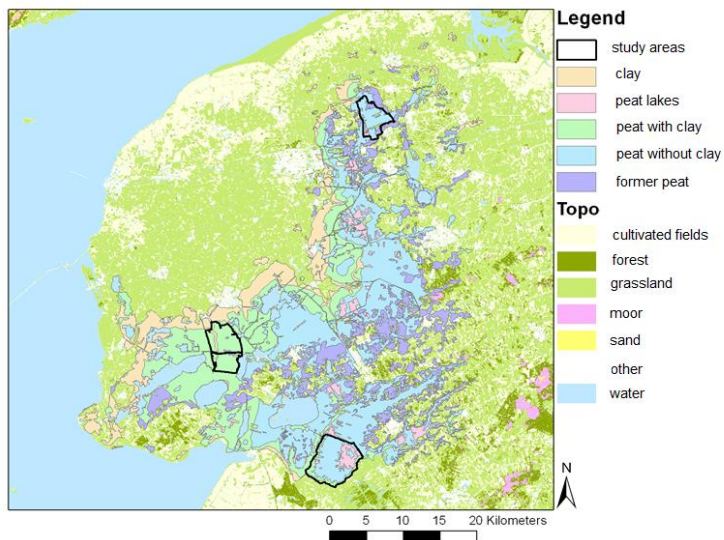
	none	little	average	experienced	expert
Experience with maps in general	<input type="radio"/>	<input type="radio"/>	<input type="radio"/>	<input type="radio"/>	<input type="radio"/>
Experience with land use maps	<input type="radio"/>	<input type="radio"/>	<input type="radio"/>	<input type="radio"/>	<input type="radio"/>

This is a picture of an interactive workshop with the 'Touch Table'

## Comparison of 4 types of visualizations



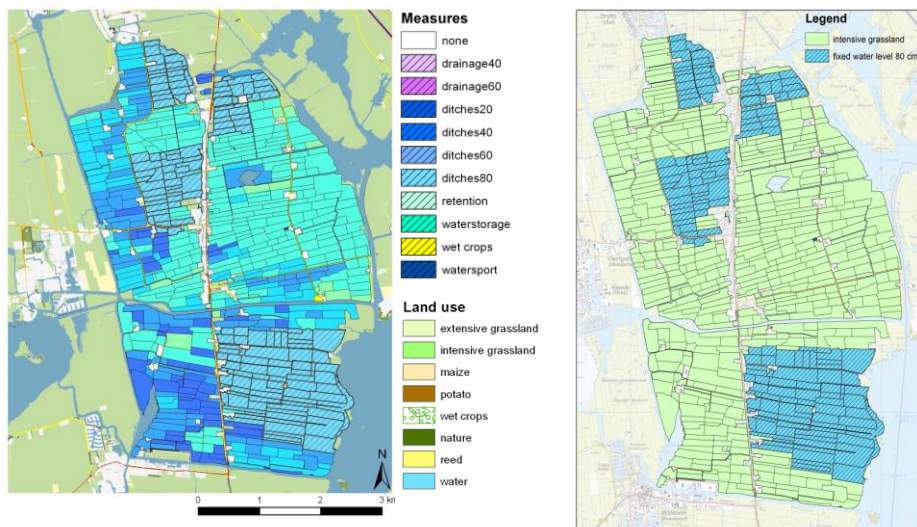
## Future vision – Peat meadow areas in Friesland



## Case study area - Hommerts

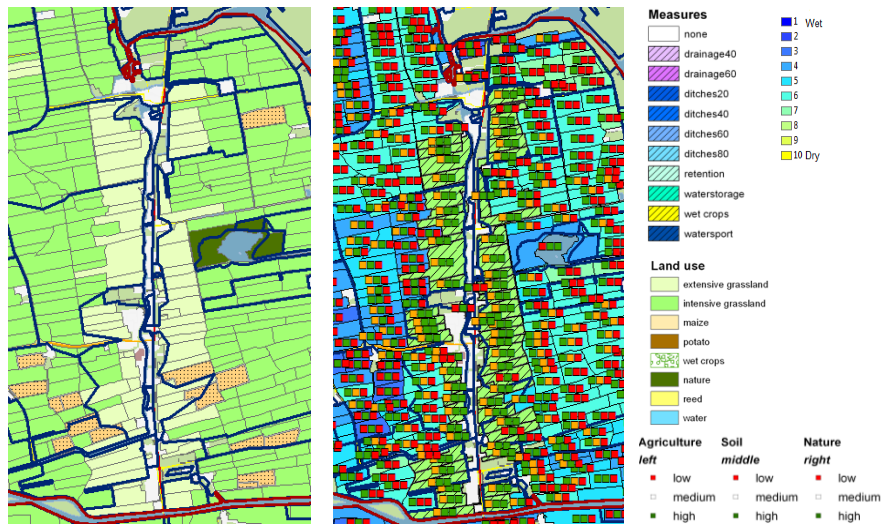


## Scenario - Business as Usual

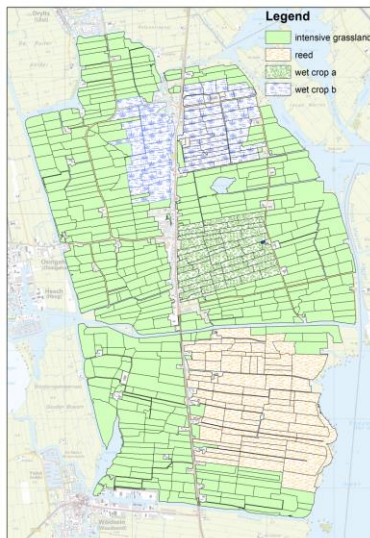




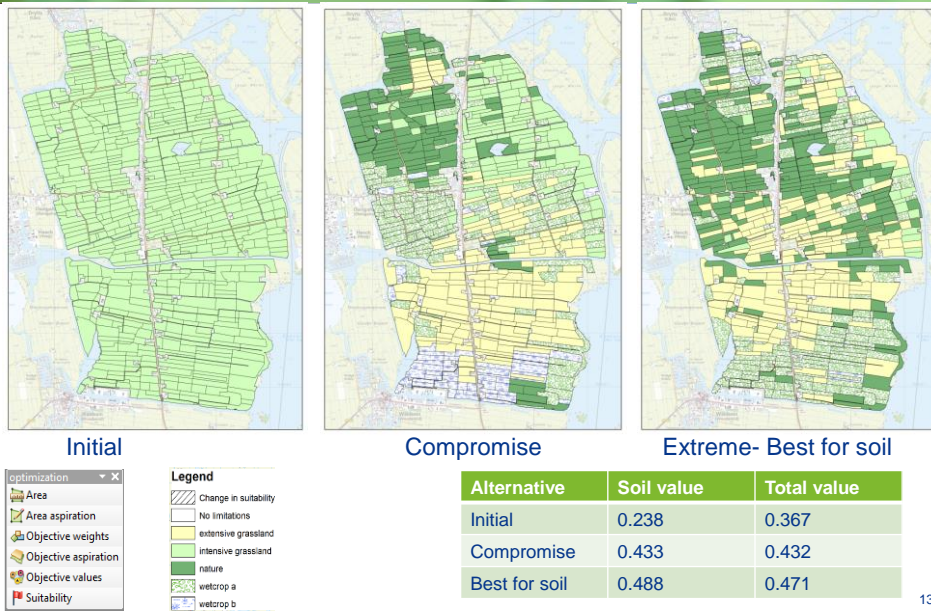
## Scenario - Parallel Tracks



## Scenario - New Horizons



## Optimization to generate alternatives



## Interactive optimization

