

CENTER for PLANNING EXCELLENCE

View from the Coast

LOCAL PERSPECTIVES AND POLICY  
RECOMMENDATIONS ON "NONSTRUCTURAL"  
FLOOD-RISK REDUCTION IN SOUTH LOUISIANA

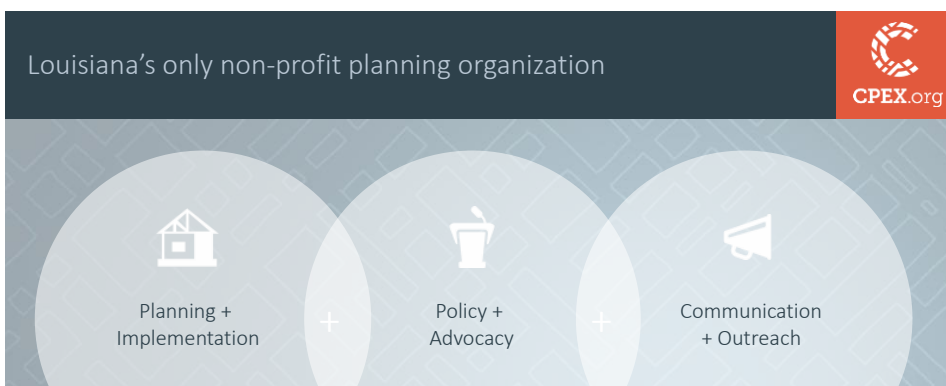
Researching, communicating  
and responding to the needs  
and efforts in Louisiana's  
coastal communities

September 25, 2014

## Overview

- Who is CPEX
- Planning in LA
- Nonstructural Research Project
- Next Steps

## Who is CPEX?



CPEX is a non-profit organization that coordinates urban, rural and regional planning efforts in Louisiana. We provide best-practice planning models, innovative policy ideas, and technical assistance to individual communities that wish to create and enact master plans dealing with transportation and infrastructure needs, environmental issues, and quality design for the built environment.

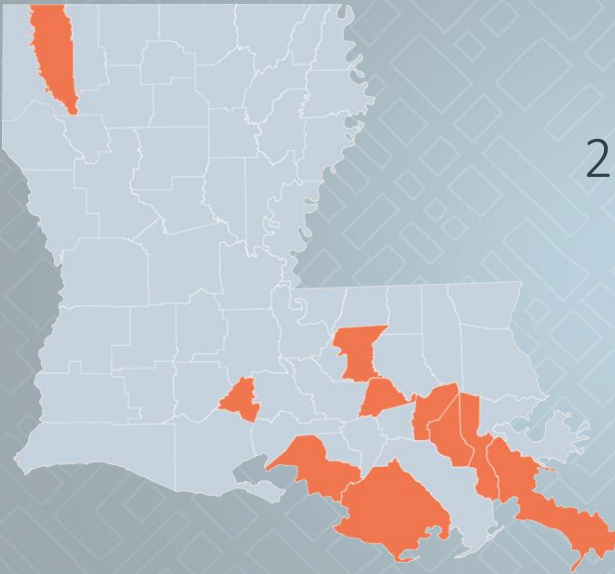
**We advocate for a more livable Louisiana through visionary planning.**

## Planning in Louisiana

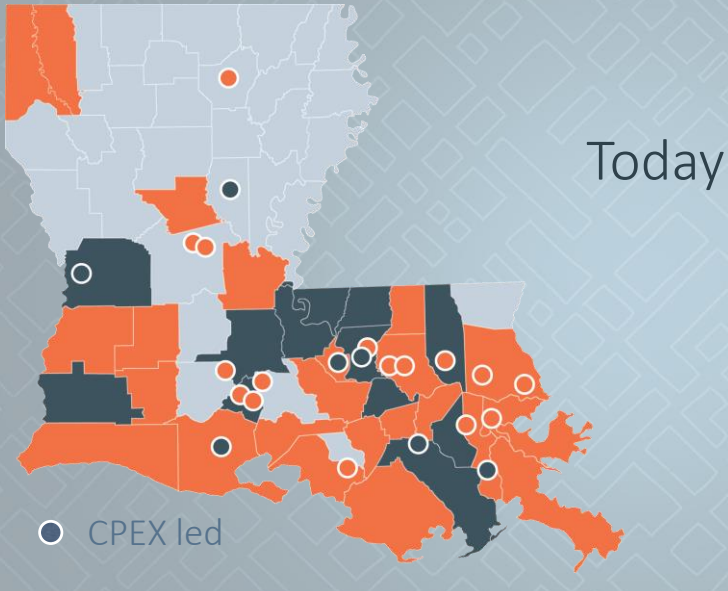
### The Evolution of Planning in Louisiana



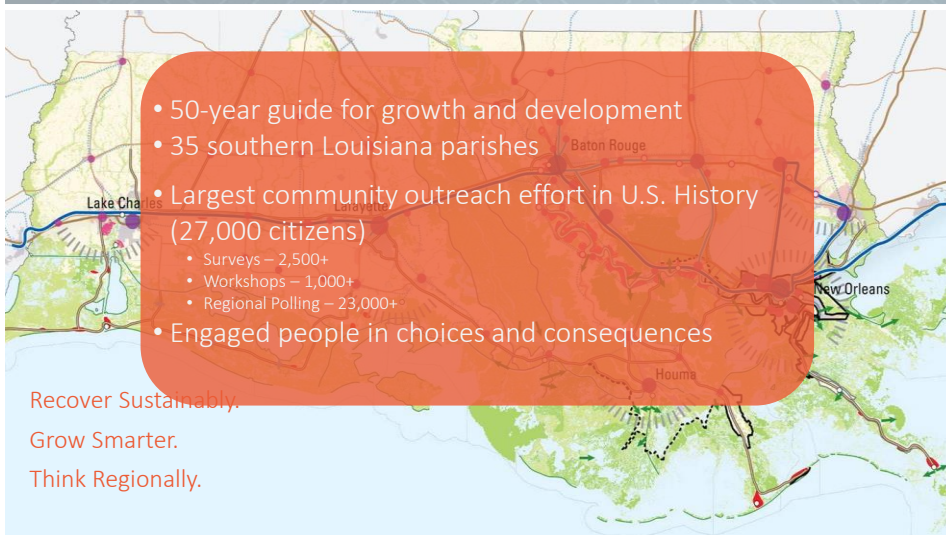
2004



## Planning in Louisiana

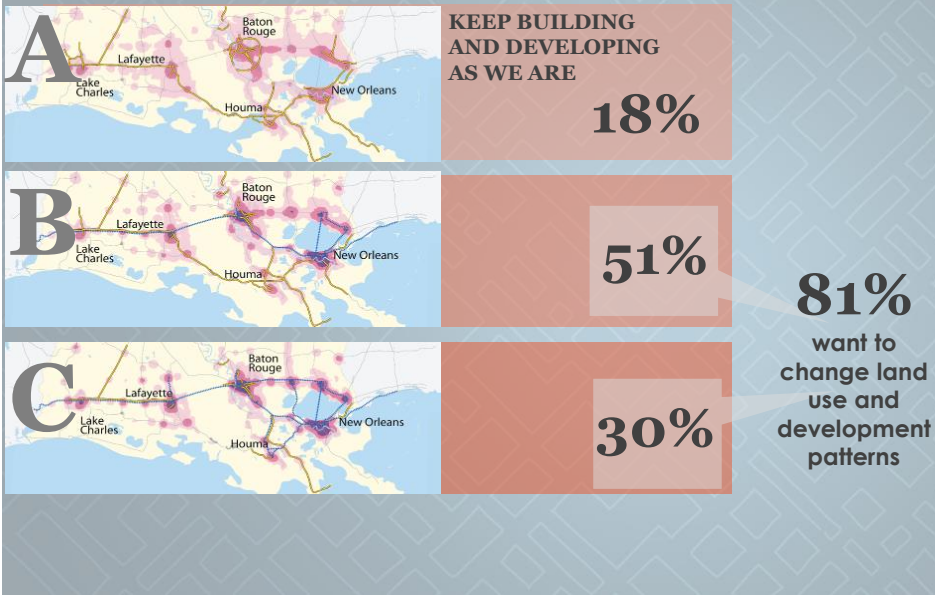


## Planning Tools for Louisiana: LA Speaks





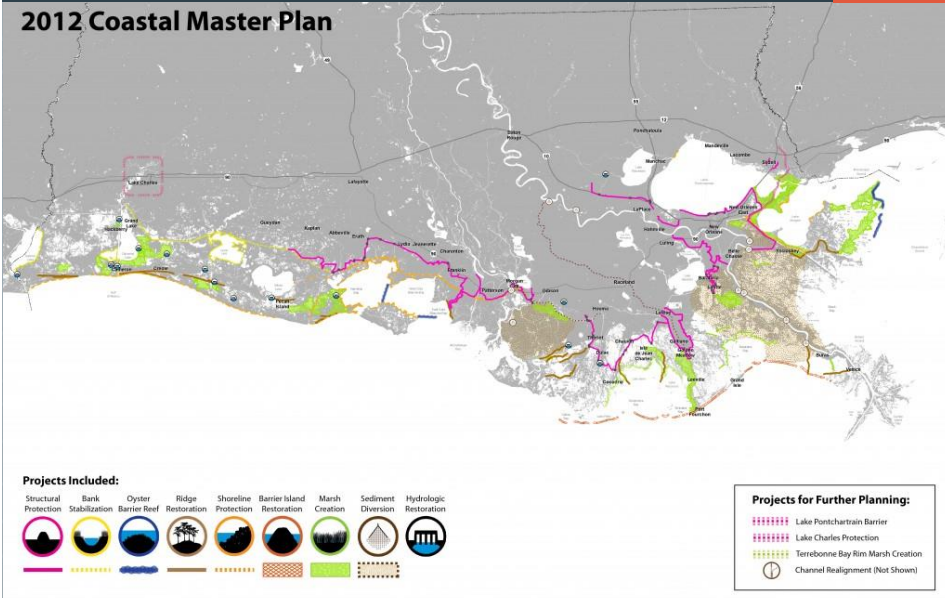
## Planning Tools for Louisiana: LA Speaks



## Planning Tools for Louisiana: Coastal Master Plan



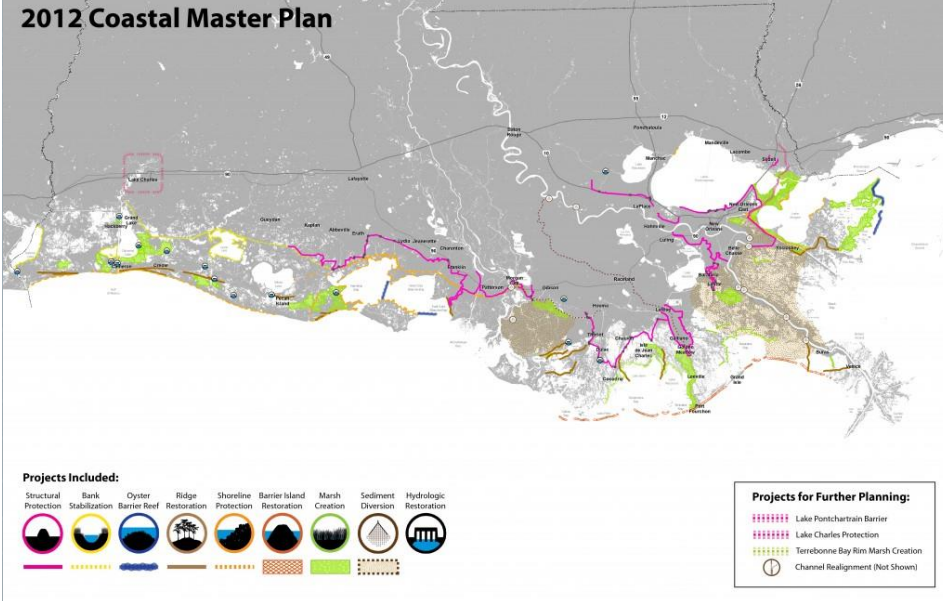
### 2012 Coastal Master Plan



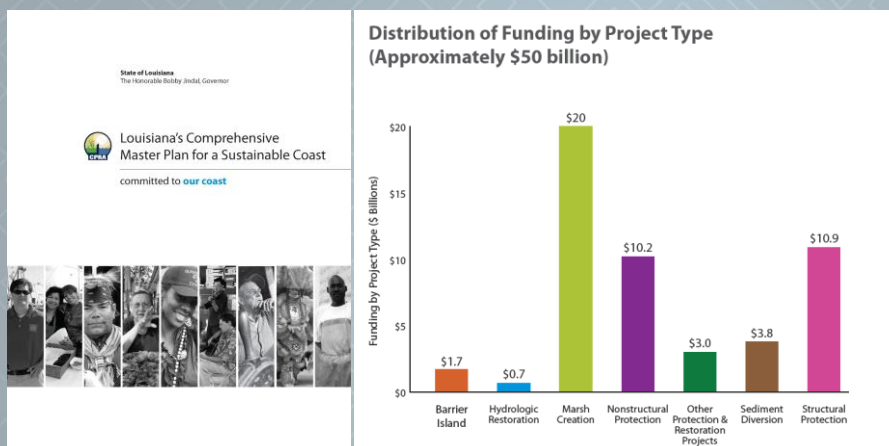
## Planning Tools for Louisiana: Coastal Master Plan



### 2012 Coastal Master Plan



## Nonstructural in Master Plan



## Coastal specific Resources



## 36-member Advisory Committee

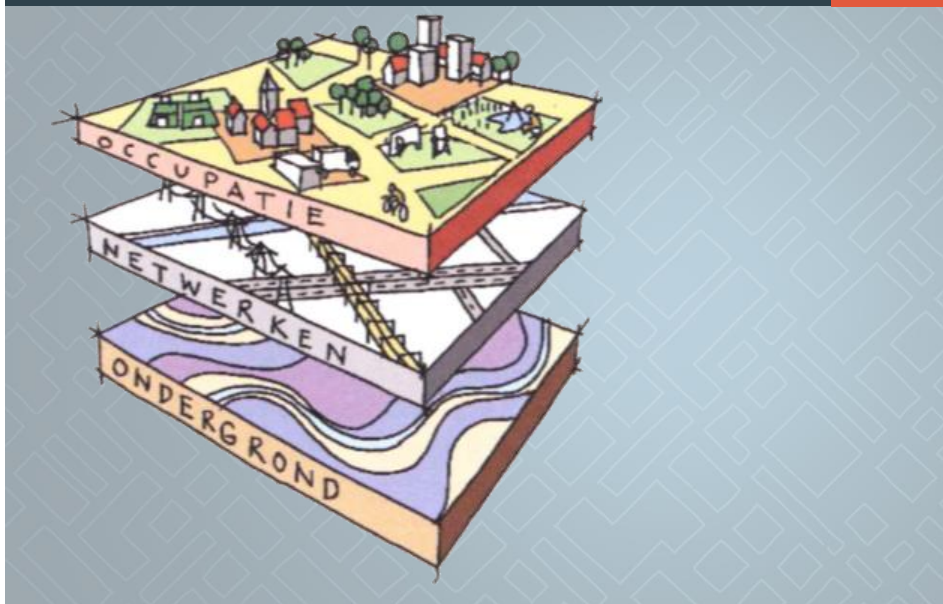
State and federal agencies  
Sen. Landrieu's Office  
Educational institutions  
Local Foundations  
National and local organizations  
Faith-based organizations  
Community leaders  
Local stakeholders  
Legal advisors

## 12-member Technical Committee

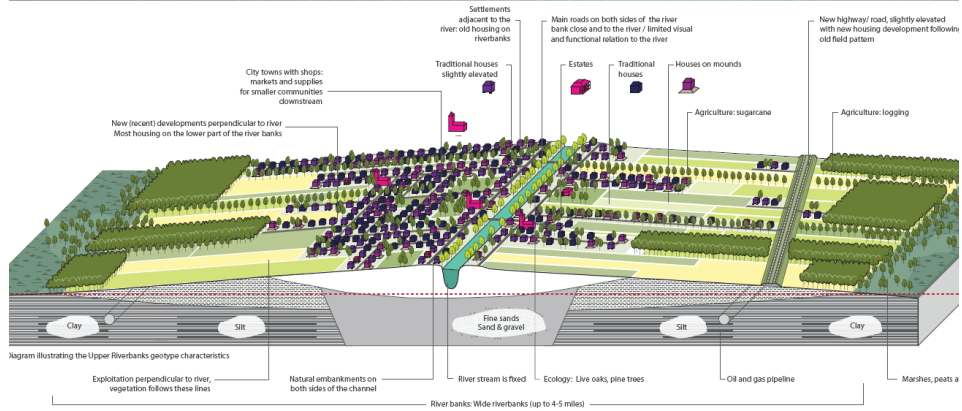
DEQ  
DNR  
Floodplain Managers  
Landscape Architects  
NWF  
Parish Planners  
Sea Grant  
Tulane University

2 Coastal Toolkit  
Communities

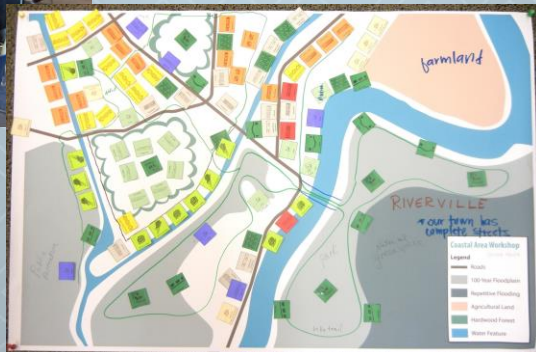
## Dutch DNA?



## Planning Tools for Louisiana: Best Practices Manual for Development in Coastal Louisiana

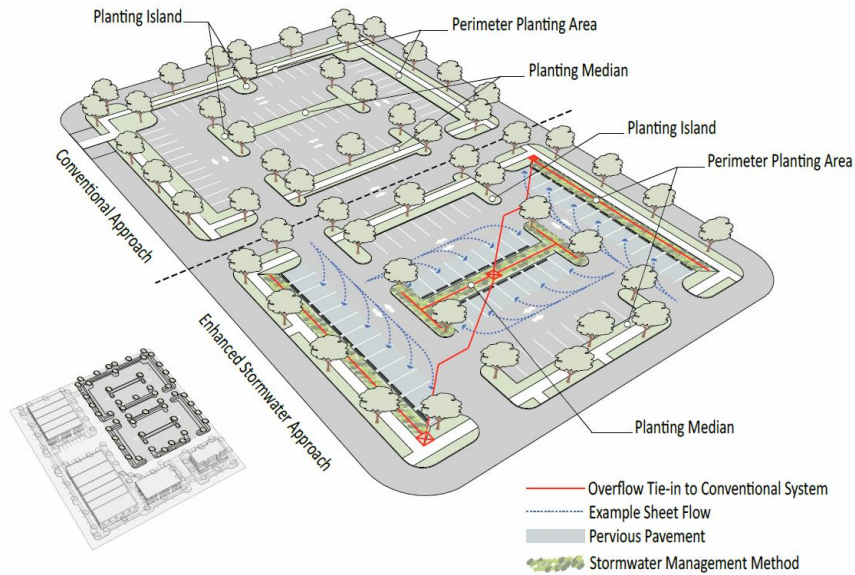


## Educational Workshops for development professionals





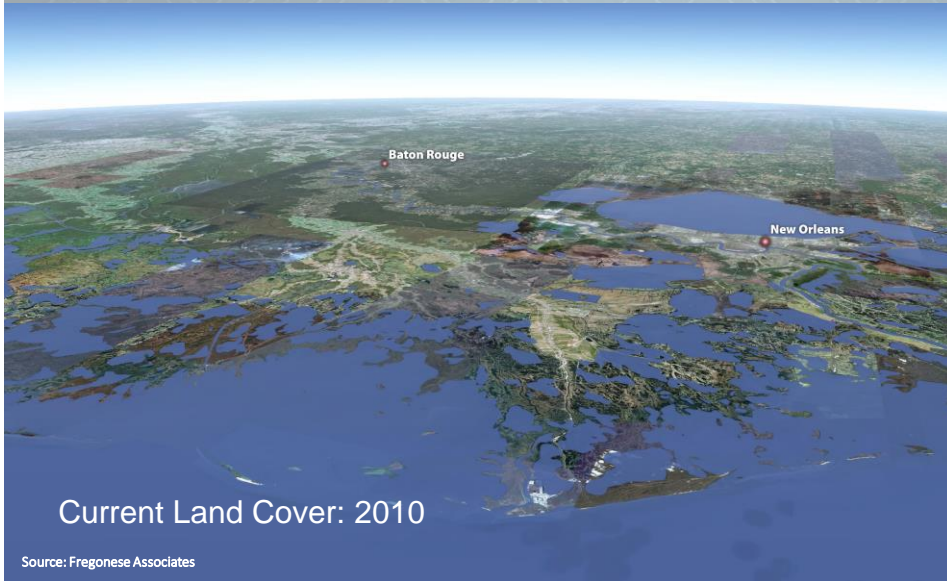
## Planning Tools: Louisiana Coastal Land Use Toolkit



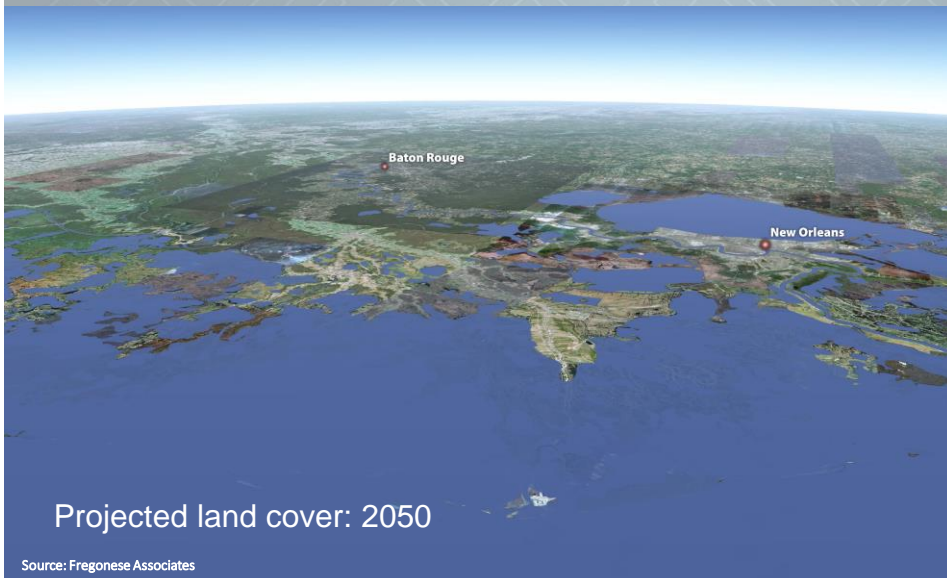
## Challenge: Louisiana's Changing Coastline



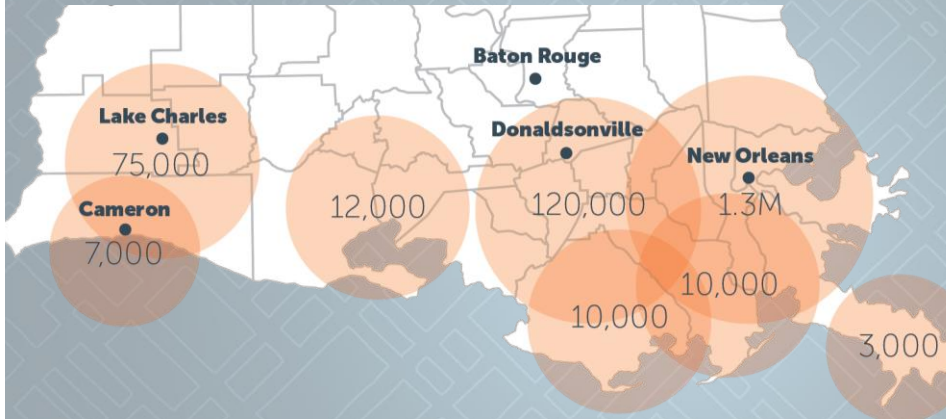
## Challenge: Louisiana's Changing Coastline



## Challenge: Louisiana's Changing Coastline

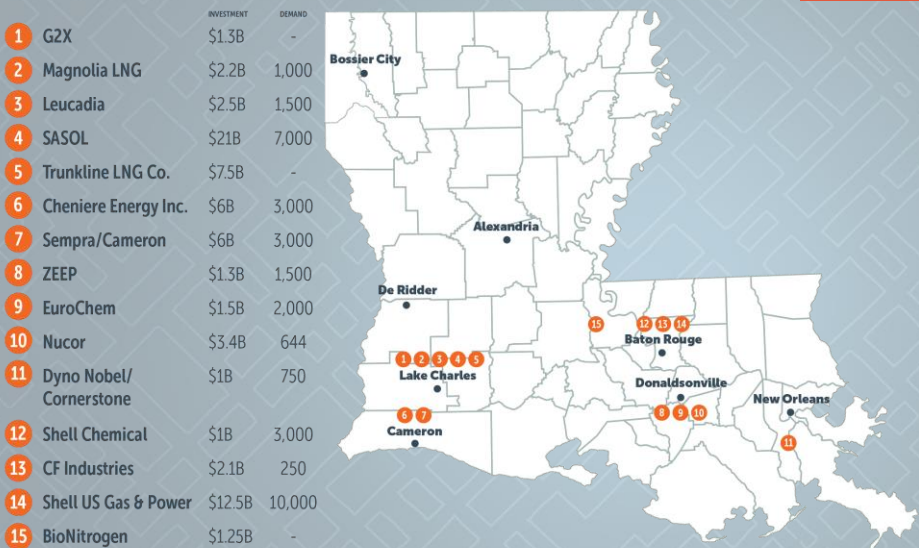


## Population at Risk



Adopted from Torquvist, et al.

## Industrial Investments



Adopted from LED



**The View  
from the Coast**

LOCAL PERSPECTIVES AND POLICY  
RECOMMENDATIONS ON NONSTRUCTURAL  
FLOOD-RISK REDUCTION IN SOUTH LOUISIANA

 CENTER for PLANNING EXCELLENCE

Project Goals:

- Identify local level risk reduction needs
- Provide policy and state and federal program rec's
- Advocate for implementation at all scales

**Methodology**

- Qualitative Interviews
- Coastal Citizen Poll
- Workshop with Advocacy Group



## Methodology: Interviews



61

Qualitative  
interviewswith  
Elected  
Officials  
and Staff in

18

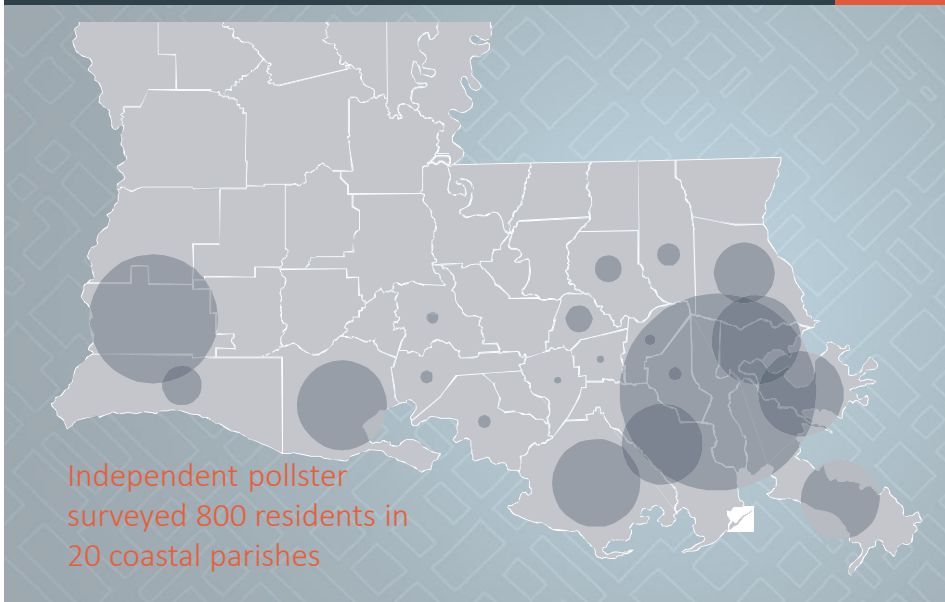
Coastal Zone  
Parishes

6

Municipalities



## Methodology: Citizen Poll



## Research Findings

- Elevation
- Flood Insurance
- Community Development Plans and Standards
- Knowledge Sharing
- Population Movements

### Finding: Elevation



- Implementation of elevation is diverse and inconsistent.
- Even though elevation has a number of financial and logistical challenges, it remains the most frequently used and desired of all physical nonstructural strategies.



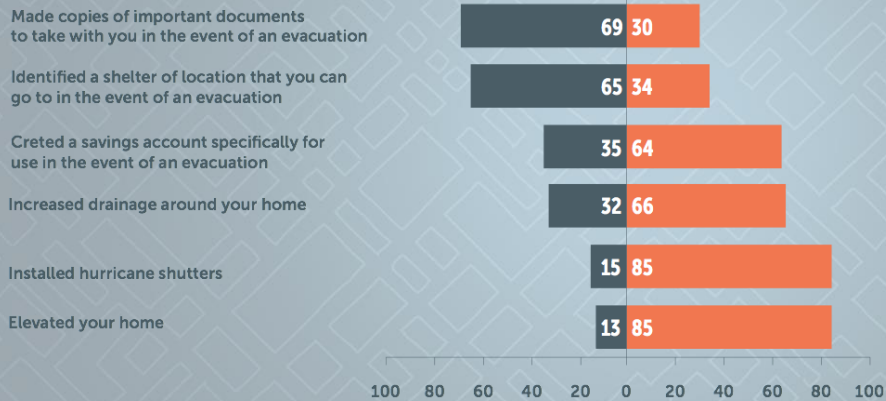
## Citizen Poll: Elevation



After Hurricanes Katrina + Rita and the BP spill, have you done any of the following to prepare yourself for another hurricane or industrial accident?

### Preparedness Actions

*Less engagement on items that cost money*



## Finding: Flood Insurance



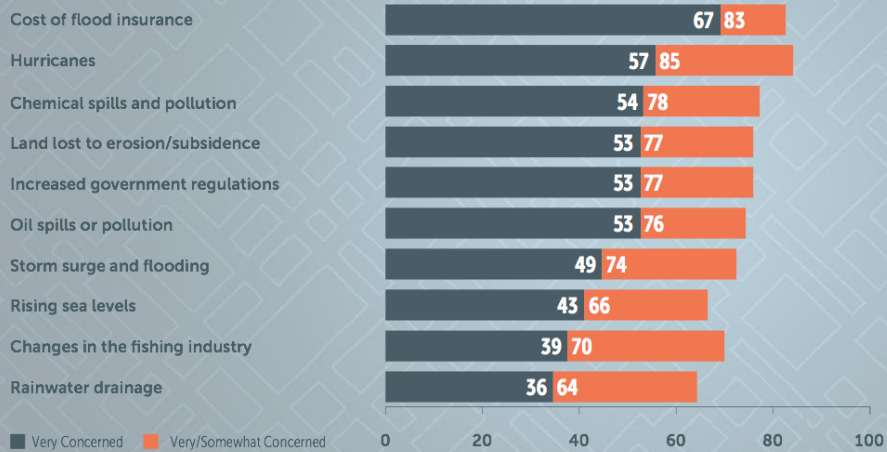
- Flood Insurance is a major concern for parishes and municipalities
- NFIP Reform has officials re-thinking priorities of risk-reduction measures
- Parishes and municipalities lack capacity to participate in NFIP's Community Rating System Program

## Citizen Poll: Concerns

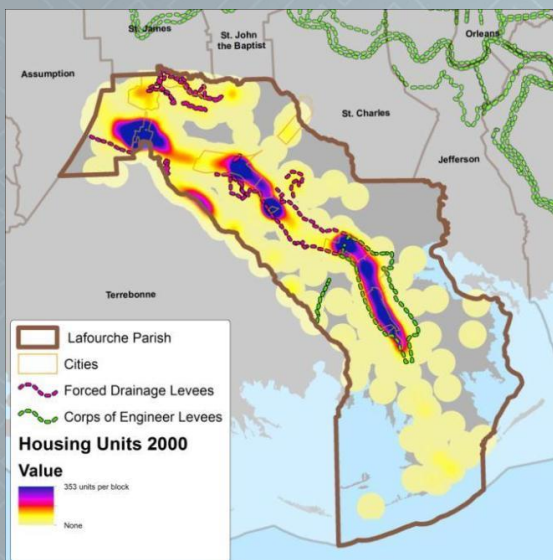


*Describe how concerned you personally are about each issue facing Louisiana coastal communities.*

### Cost of flood insurance and hurricanes top concerns



## Finding: Relocation

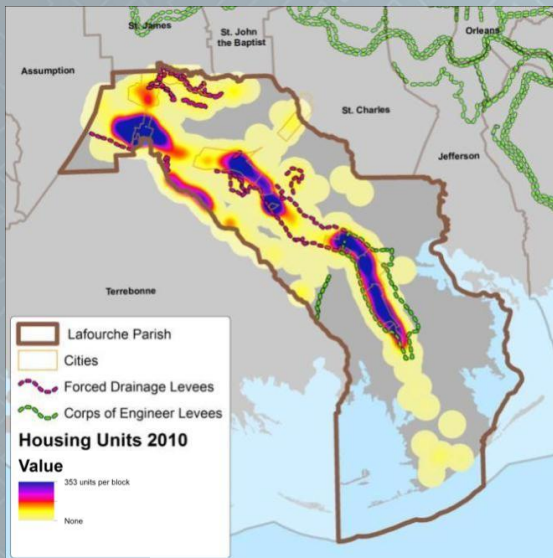


Source: Fregonese Associates

Housing Units - 2000



## Finding: Relocation



Source: Fregonese Associates

Housing Units - 2010

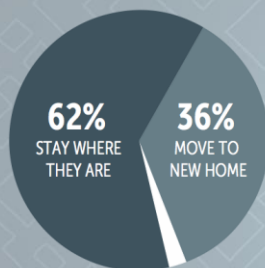
## Citizen Poll: Relocation



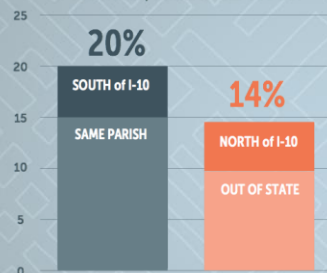
*In the next few years, would you like to continue to live where you are now or move to a new home?*

**Most want to continue living in the coastal zone**

82% would like to stay in their current home south of I-10



IF YOU MOVED, WHERE WOULD YOU GO?



- Public offices and residents are slowly moving out of the southeastern coastal areas
- Acquisition is not a popular hazard mitigation option

## Finding: Community Development Standards



- Officials are hesitant to implement regulatory standards for development
- Officials recognize that the public too has to understand how regulations create safety, reduce risk, and decrease uncertainties

## Finding: Knowledge Sharing



- Officials learn about coastal risks by responding to them
- Wealth of dispersed information is stalling decision making
- Parishes and municipalities need staff training and public education
- Parishes and municipalities lack capacity and training to implement nonstructural measures



## Recommendations

- Dedicated Funding
- State Master Plan Update
- Existing Regulatory/Permitting Program updates
- Existing Incentive Programs updates
- Hazard Mitigation and Land Use Planning
- Convening and Coordinating
- Public Information and Education
- Guidance, Best Practices, and Conditions for Grant Funds



