

Building Blocks for Adaptation strategies in de Rotterdam Region

Deltas in times of climate change II

Lissy Nijhuis
ewjt.nijhuis@rotterdam.nl



Rotterdam Region



→ 15 Communities

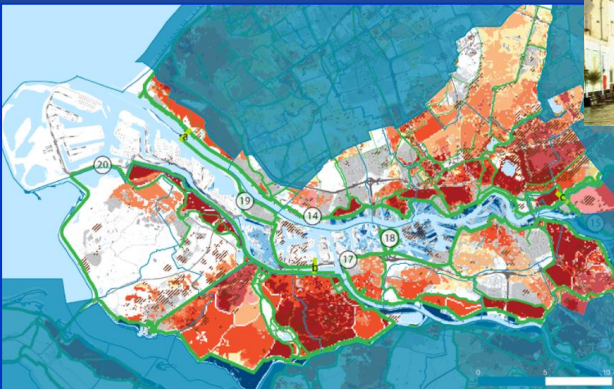
- Vlaardingen
- Maassluis
- Schiedam
- Lansingerland
- Capelle a/d IJssel
- Krimpen a/d IJssel
- Ridderkerk
- Albrandswaard
- Barendrecht
- Spijkenisse
- Brielle
- Bernisse
- Westvoorne
- Hellevoetsluis
- Rotterdam


→ Large part lies more than 6 metres below sea level

→ Safety level primary dike: 1:10.000 year

Climate challenges



Rising sea level

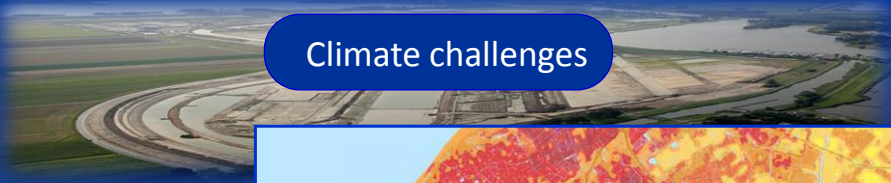




Climate challenges




Heavy precipitation





Climate challenges

Heat





Climate challenges

Drought





Need for a strategy

Climate is changing





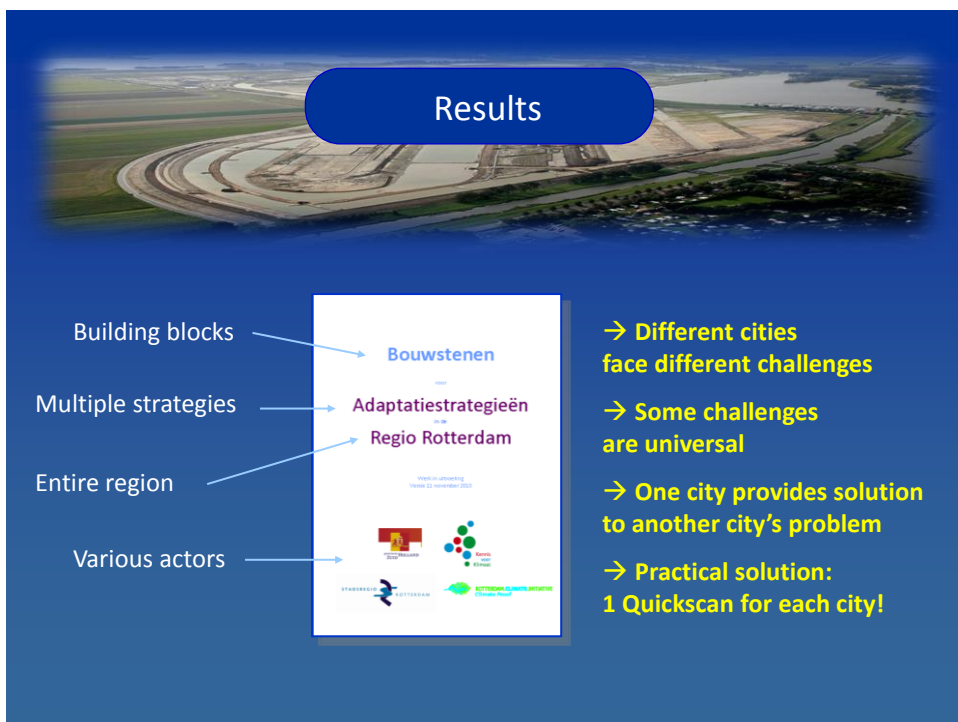
Ongoing developments



Safe imago is crucial



Adaptation offers chances



Results



- Individual cities feel (and are) taken seriously
- Aware of benefits of regional approach
- Link to initiatives national government
- Cities actually start with the quick scans
- Policy makers and experts feel personally involved
- Beginning 2015:
Each city a climate adaptation strategy!

Critical Success factors

CSF:

One key actor

Science and practise

Political willingness

Re-labelling existing plans/initiatives

Focus on frontrunners

Pitfall:

No individual ownership

Different timing

Depending on urgency other matters

No additional action needed

Loosing laggards

How to overcome:

Building blocks and practical quick scan

Designated liaison

Some Luck

Focus on benefits and no/low regret

Peer pressure

