

Delta Programme Commissioner

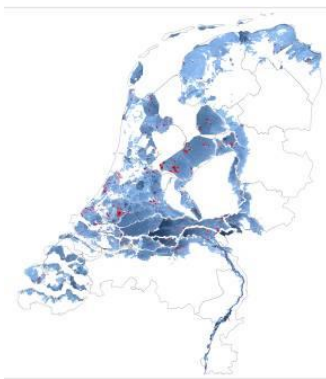
Leadership and stakeholder management: the Dutch Delta Programme

Jos van Alphen
Staff Delta Programme Commissioner

25 September 2014



The Netherlands: flood prone and productive



- About 400 km of Rhine river
- International catchment
- About 350 km coastline
- About 9 million inhabitants below flood level
- Invested value 1800 bln euro
- Protection level: 1:10.000 – 1:1250
- 3500 km of flood defences, hundreds of locks, sluices, pumping stations

25 September 2014



Dutch water management, shared responsibilities

- **Ministries** : policy guidelines, mngt. national water system
- **Provinces** : spatial planning, regional coordination of policies
- **Municipalities** : local planning, water and disaster management
- **Waterboards**: flood protection, regional water management
- Private sector: water supply and demand, (consultancy)
- **Universities**: research

Instruments:

- National Water Policyplan (2009)
- Administrative agreements on watermanagement (2011)
- Water Act, Spatial Planning Act → Environment Act

25 September 2014



An innovative approach: Delta Programme



One Aim:

- keeping NL a good, safe and attractive place to live and work for present and future generations (→ long term perspective)

Two Goals

- Safe, now and in the future (2050-2100)
- Fresh water supply guaranteed, also in dry periods

Three Basic values:

- Solidarity, Flexibility and Sustainability

Not in answer to a disaster, but in advance, to be prepared or avoid it

25 September 2014



Key question: how to maintain “sense of urgency”

1. Multi-governmental approach and stakeholder management
→ joined process of strategy development and decision making
2. Institutional arrangements
3. Example: spatial adaptation

25 September 2014



1. Multi-level governance

Multi-governmental process of decision-making and cooperation and stakeholder management

In order to:

- Collect creative and innovative ideas
- Combine with local developments (→“synergy”)
- Involve local stakeholders and built acceptance

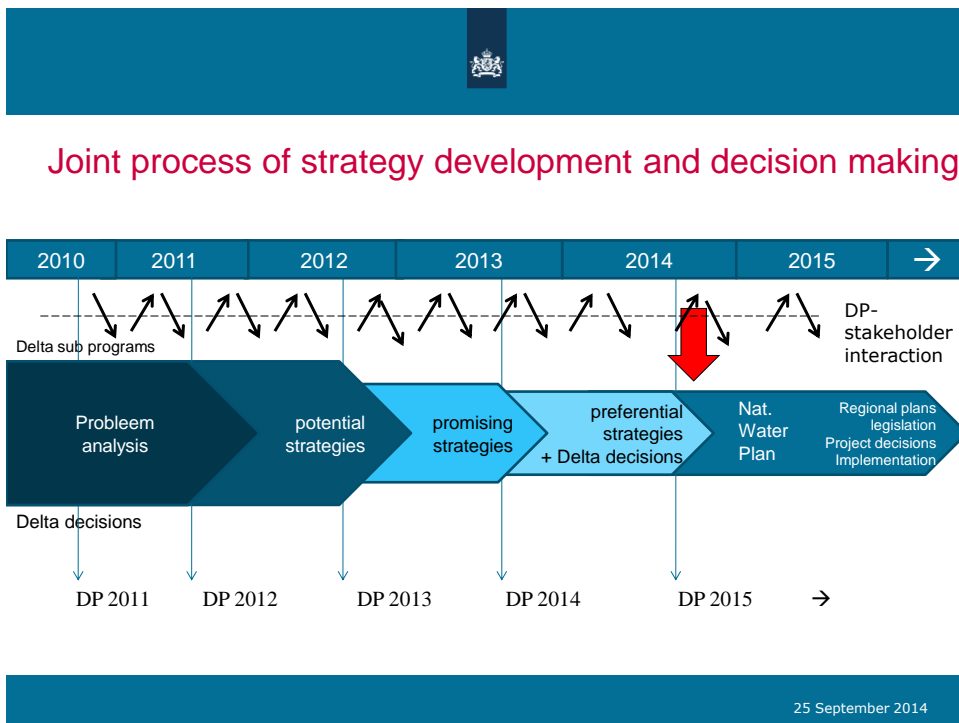
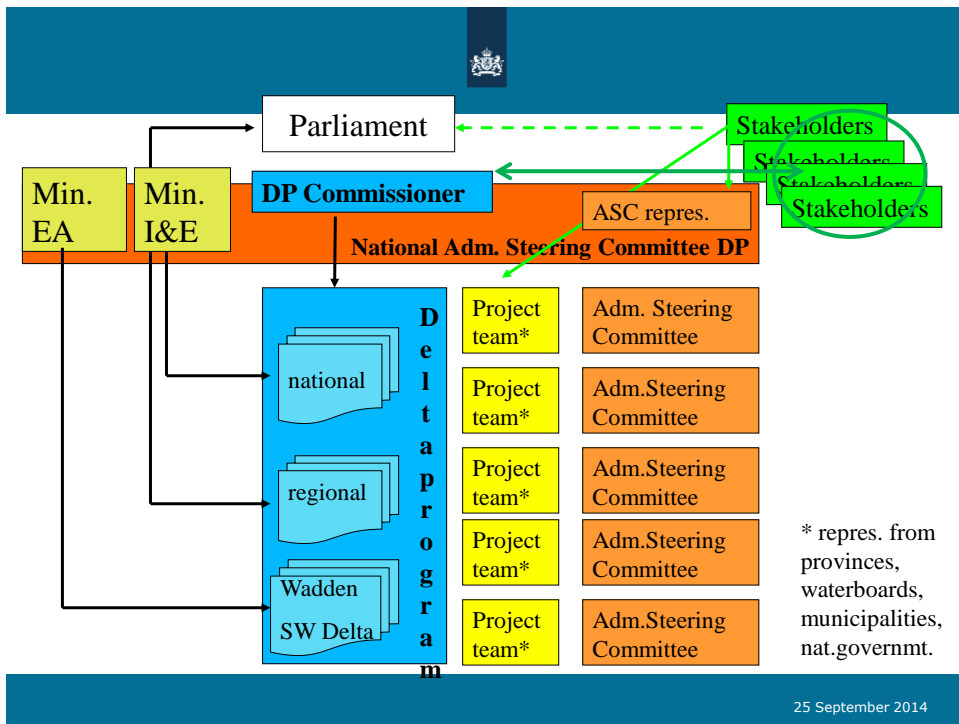


Supervised by Delta Program Commissioner
- progress, uniformity, coherence

Joint fact-finding: deltamodel + common evaluation system and knowledge base → improve quality of information and acceptance

Delta Programme Commissioner

25 September 2014





2. Institutional arrangements

- Delta Commissioner,
supervising adequate (regional) multi-governmental
implementation **(2010)**
- Delta Fund : 1 bln €/yr (> 2020) **(2011)**
- Delta Act, “anchoring” Delta-commissioner, program and fund
(2012)
- Delta Program: measures, yearly update, presented to
Parliament **(annually)**
- Delta Decisions (strategic) **(2014)**

25 September 2014



3. Climate resilient design and waterproof (re)construction

To prepare urban areas on climate change (drought, pluvial floods, heat)

- Local government is responsible: promote, inform and enforce (building codes), select pilots and combine with the dynamics of urban (re)development.
- National government supports: policy targets and framework, sharing information, tools, stimulation fund, legal instrument (“Water Review”)
- Administrative agreement between national government, provinces, waterboards and municipalities on:
 - a joint ambition (2050)
 - “mainstreamed” way of working (2020) (→ “knowing / wanting / working”, web-portal and Guide to Spatial Adaptation)
 - mid term evaluation (2017)

Improve resilience of vital services (energy, ICT, communications, healthcare,..→

- Tailormade improvement plans per sector (government-sector)

25 September 2014



Some examples



25 September 2014



www.deltacommissaris.nl

25 September 2014