

Rotterdam, 25 September 2014 - Deltas in Times of Climate Change

Resilient Adaptation

How to practice what is preached?



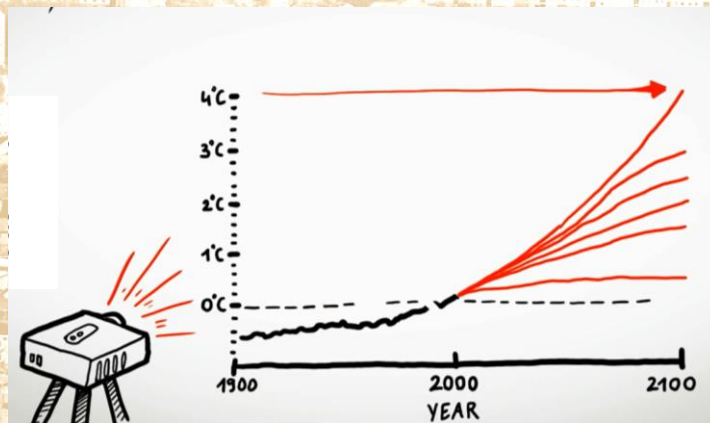
CRC for
Water Sensitive Cities

The issue in a nutshell

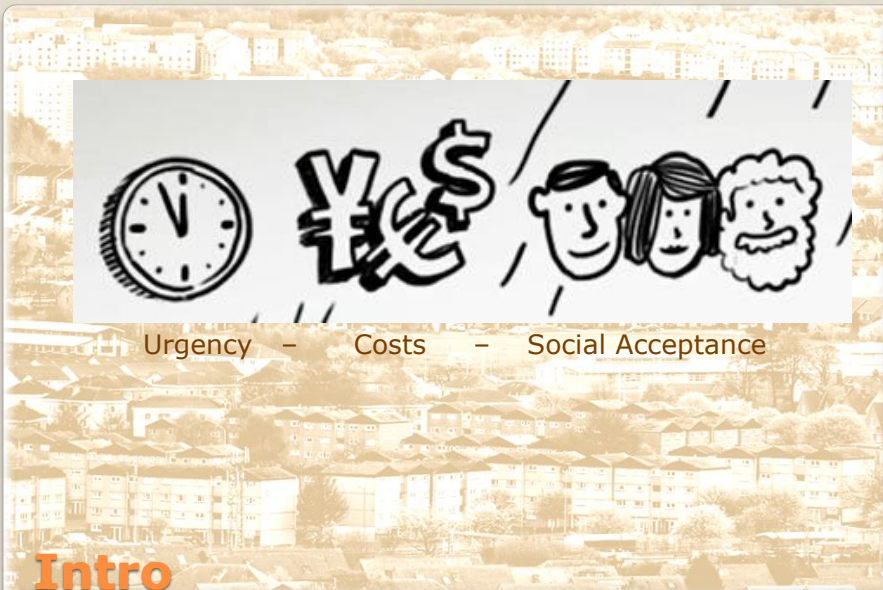




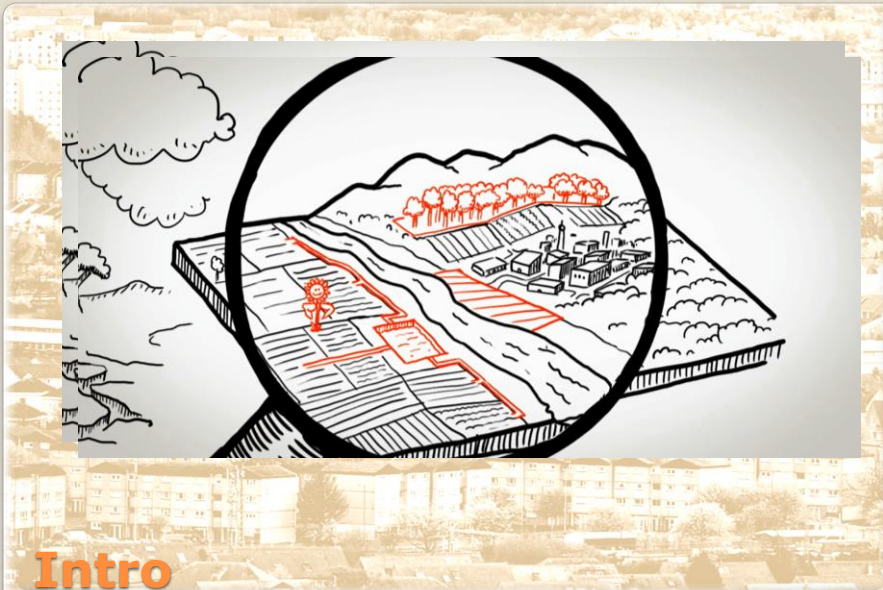
Intro



Intro

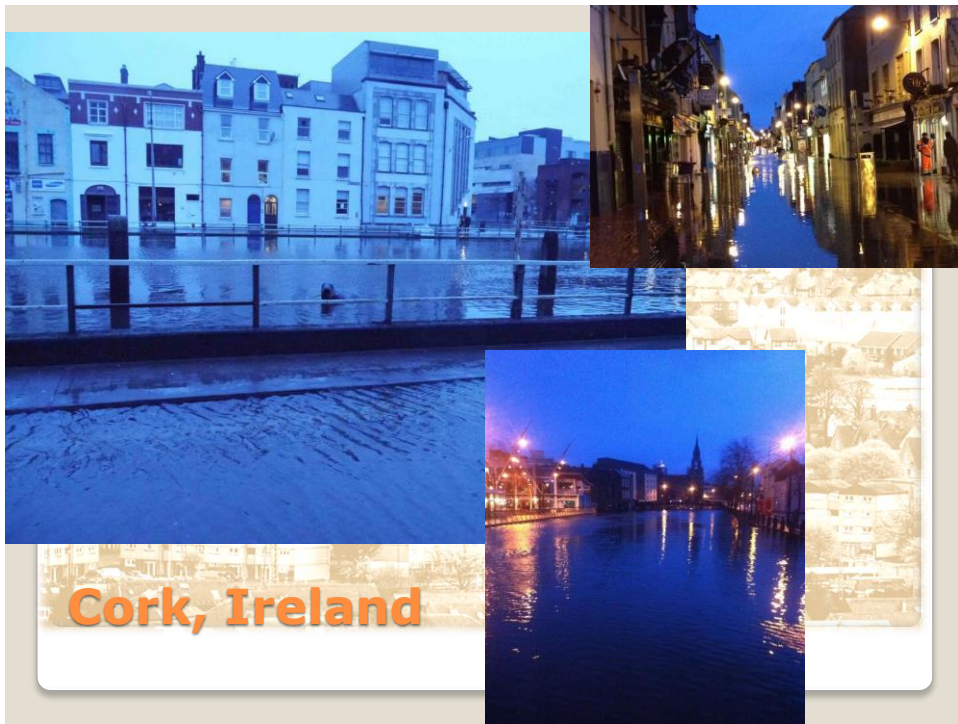






- Beth McLachlan,
 - City of Melbourne, Australia
- Erwin Meijboom,
 - Waterboard of Delfland, The Netherlands
- Cathal O'Donovan,
 - National Forum of Community Flood Committees, Ireland

Our Guests



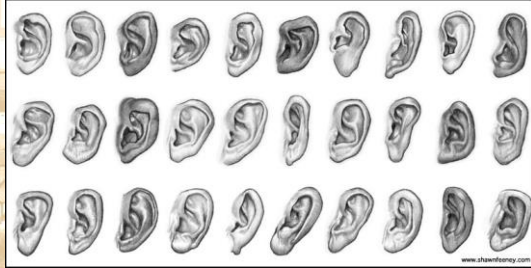


Delfland, Netherlands



**A different view on
'Working with Experts'**

All ears...



Talking Tables & Reactions from the Audience



Closing statements