



COASTAL ASSESSMENT VULNERABILITY A CASE STUDY OF THE MEKONG RIVER DELTA IN VIETNAM



Thang T. X. Nguyen and Colin D. Woodroffe
University of Wollongong, Australia

DELTA IN TIMES OF CLIMATE CHANGE II-
INTERNATIONAL CONFERENCE
Rotterdam, Netherlands, 24 – 26 Sep 2014

1



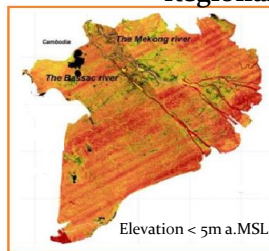
Scale-based approach

Global scale

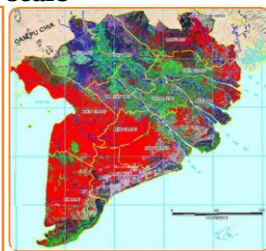


IPCC AR4 2007

Regional scale



SRTM 90 m



Inundation map VN 2011

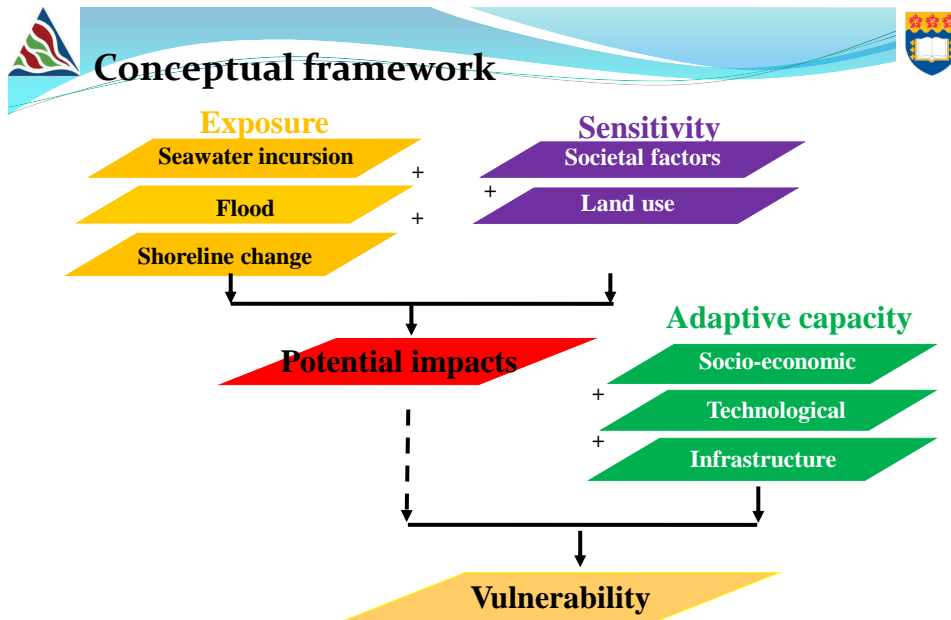
Local scale



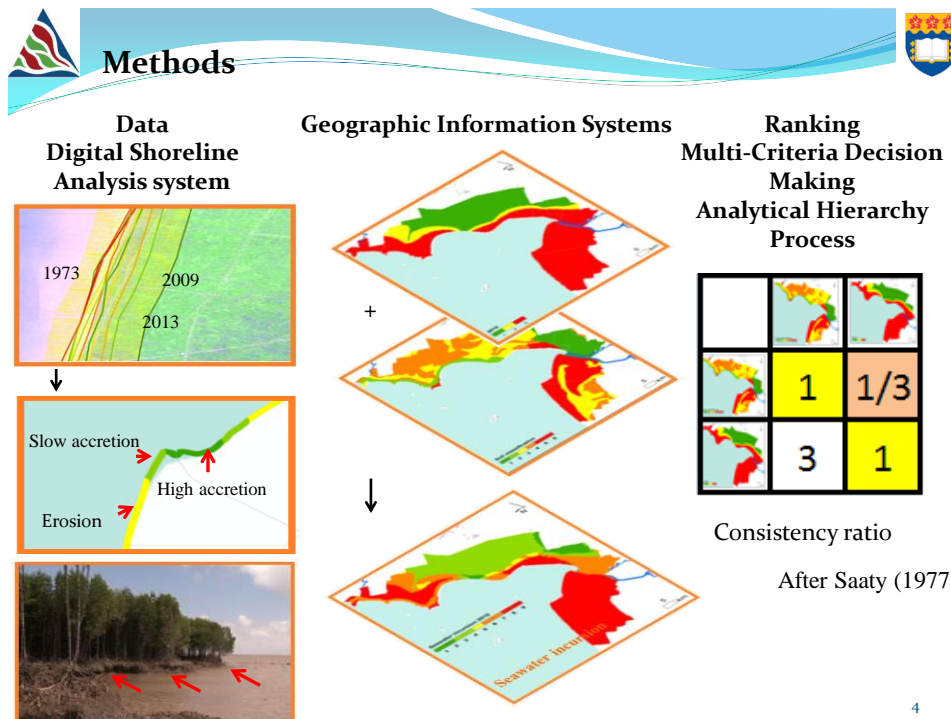
Kien Giang coastal province

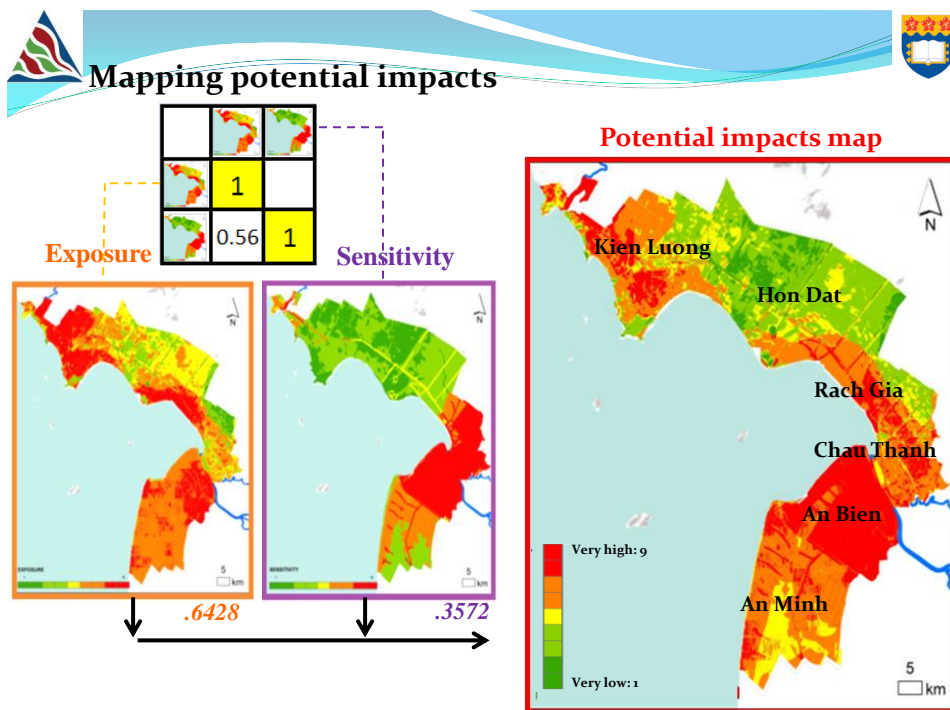
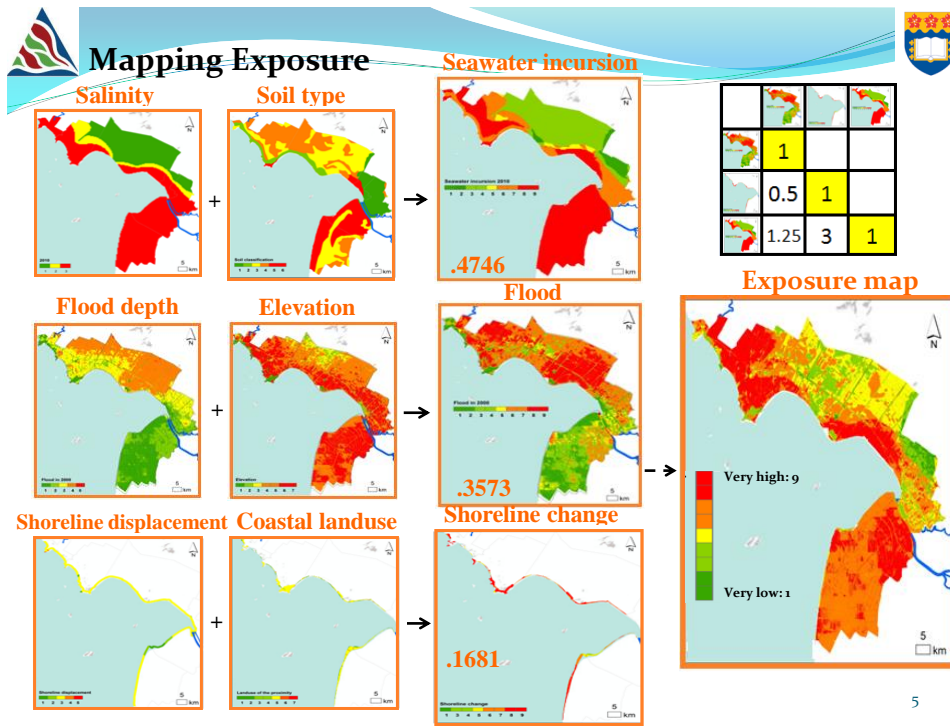
▪Subsidence omitted, the delta

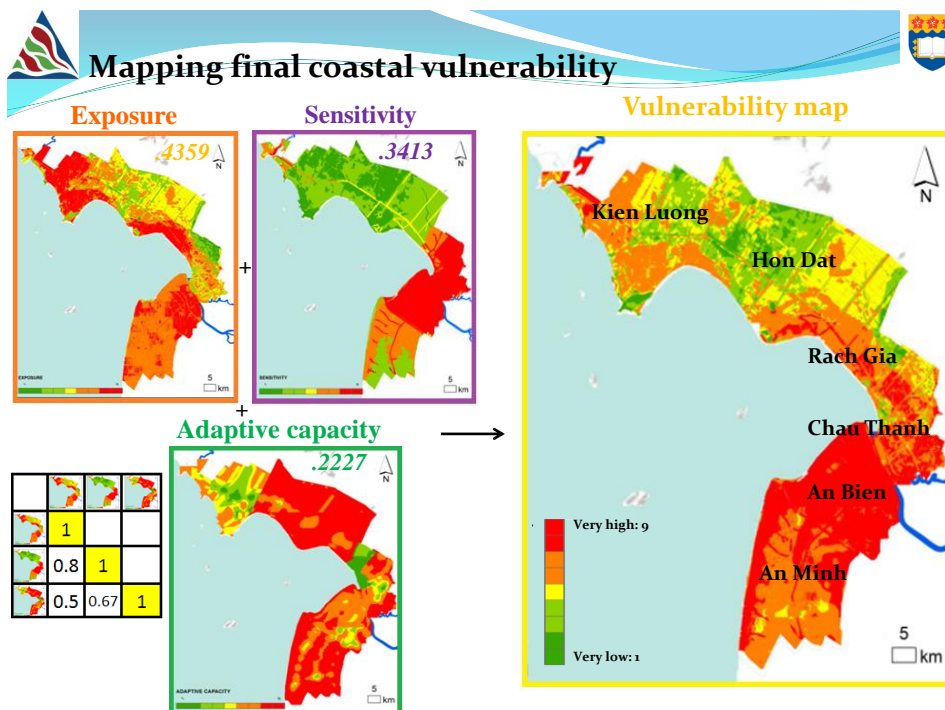
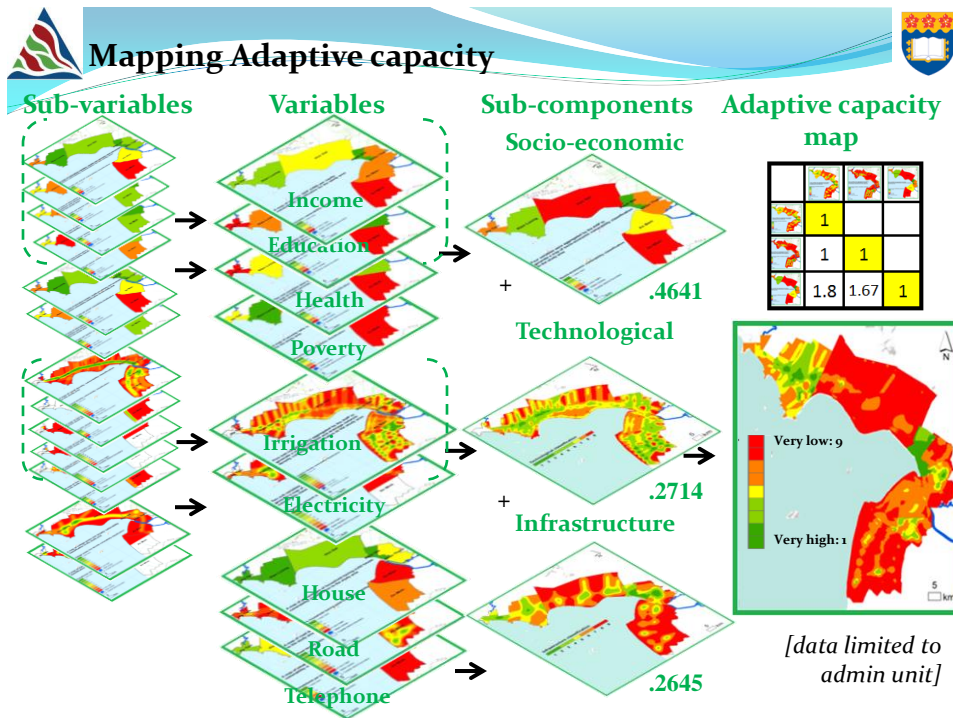




European Environment Agency, 2010;
Swedish – Canadian Agencies, 2009







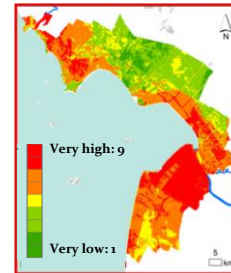


Conclusions



- **Spatial variability in vulnerability**
 - at regional vs. local scale
- **Adaptive capacity included –**
 - final vulnerability map differs little from potential map
- **Ranking influences map outcomes –**
 - inconsistency ratio provides check
- **An Bien** appears most vulnerable
 - very low areas, limited sediment input
- **Need more detailed study at finer scale, focused on predicted vulnerable hotspots**

Potential impacts map



Final vulnerability map



**THANK YOU FOR
YOUR ATTENTION!**



Questions????



