



Dutch International Cooperation in delta resilience

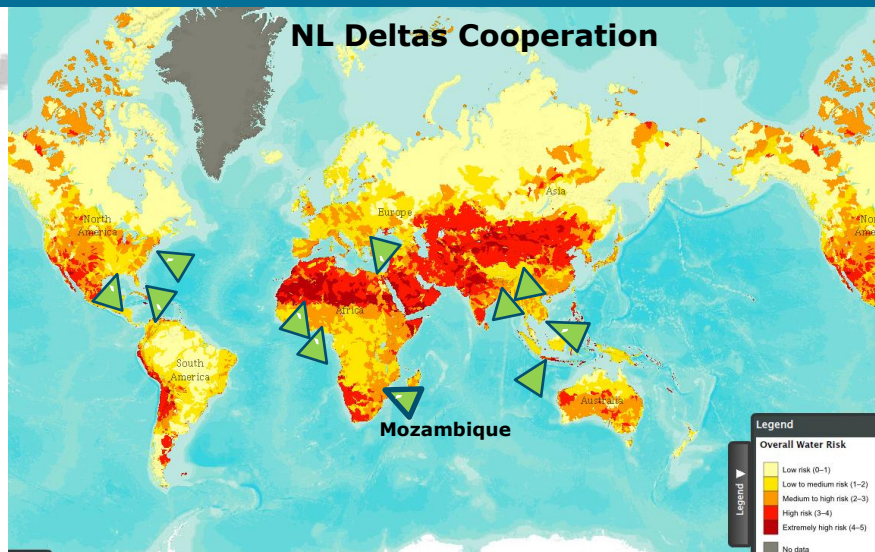
Mozambique - Beira

Rotterdam, September 24th, 2014

Maarten Gischler
Netherlands Ministry of Foreign Affairs

1

Deltas in Times of CC – Mozambique – Beira City



2

Deltas in Times of CC – Mozambique – Beira City



The challenges in deltas that we work with

Bustling cities, rapid growth
Transformation of agriculture
Poles of innovation

... and also

- **Urban sprawl**
- **Underinvestment in infra, services**
- **Rising inequality**
- **Vulnerable to effects of CC**
- **Creeping pollution, salinity, erosion, congestion, etc.**
- **Vulnerable to shocks (floods, spills, epidemics, etc.)**

3

Deltas in Times of CC – Mozambique – Beira City



Why Dutch delta focus?

- Pioneering at land/sea interface since 11th century
- International reputation
- Feedback loops: we learn from innovations abroad

4

Deltas in Times of CC – Mozambique – Beira City

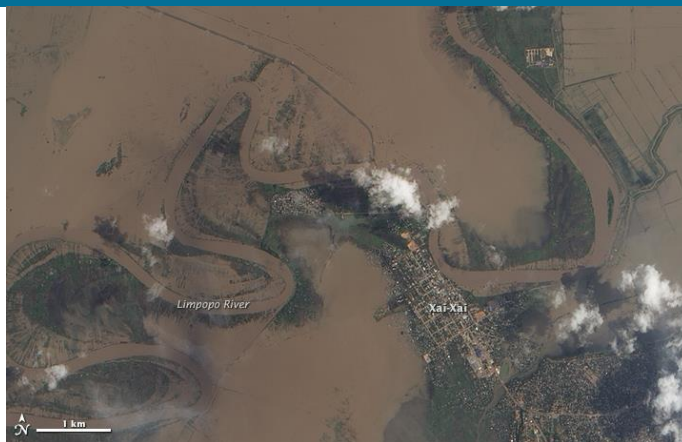


Estimated land loss of 200-900 meters between 2003 (blue line) and 2012 (orange line) due to erosion in Demak District, Central Java, Indonesia. Google Earth image.

Coastal erosion, Indonesia (2003-2012)

5

Deltas in Times of CC – Mozambique – Beira City



Floods Mozambique, January 2013

6

Deltas in Times of CC – Mozambique – Beira City



Enhancing resilience



Yesterday's solutions not fit for today's urban challenges

Engage with/build on local adaptive capacities

Innovate: technology, governance, financing

Break down silos; develop integrated solutions

7

Deltas in Times of CC – Mozambique – Beira City



Across our cooperation in deltas

Variety of opportunities and challenges

Different scales (Beira, Mekong Delta, Bangladesh)

Wide spectrum of partners

No one size fits all, but common elements (12 building blocks)

Conference will help us make sense of it all

8

Deltas in Times of CC – Mozambique – Beira City



Beira's strengths

- Bustling port, strategic location
- Visionary mayor
- Strategic approach, Beira 2035
- Municipality as convenor
- Emerging recognition: partnership may benefit all
- Mobilising investment for targeted interventions

- Mr Mario Guina, Director Beira Master Plan
- Mr Candido Jone, Director of Beira Port and Railways

9

Integrated Delta Planning and Management module



Enhancing resilience of Beira city

3 building blocks

- Integrated approach
- Financing resilience
- Cooperation LG-Stakeholders

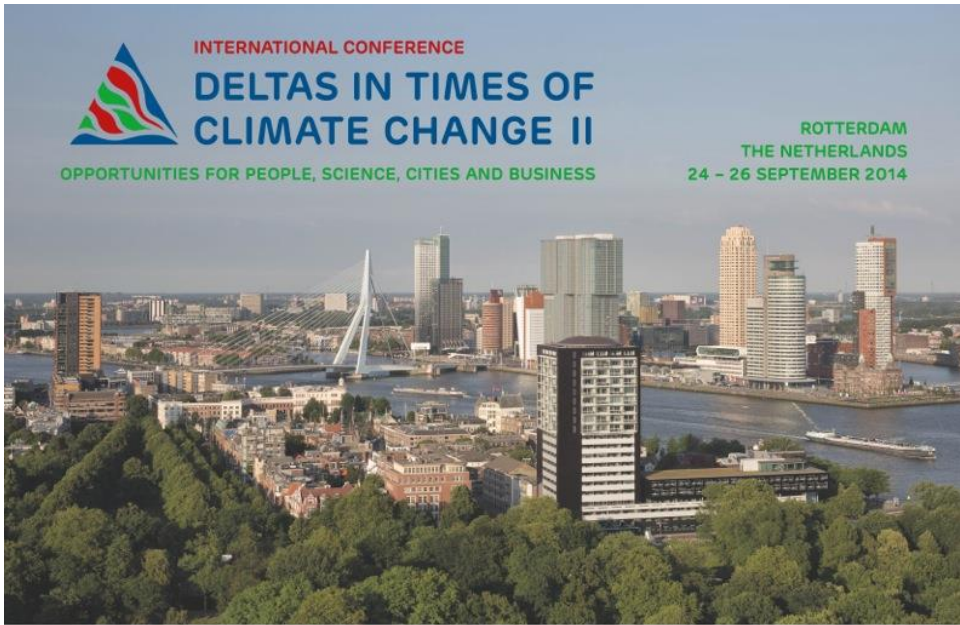
Long term NL engagement

- Port
- Municipality
- Health sector and other



10

Deltas in Times of CC – Mozambique – Beira City



INTERNATIONAL CONFERENCE

DELTA IN TIMES OF CLIMATE CHANGE II

OPPORTUNITIES FOR PEOPLE, SCIENCE, CITIES AND BUSINESS

ROTTERDAM
THE NETHERLANDS
24 - 26 SEPTEMBER 2014

