

# Dierenwelzijn in Nederland & Europa

Gluren bij de buren:  
Dierenwelzijn in internationaal verband

12 maart 2014 - Hans Spoolder



- 
- An outline map of Europe, showing the continent's borders and major islands. The map is positioned in the background of the slide, with the text overlaid on it.
- Op dierenwelzijnsgebied behoort Nederland tot de koplopers
  - Van belang is dat de hoge ambities van Nederland ook hun weerslag krijgen in Europese regels
  - Dit is niet alleen belangrijk voor eerlijke concurrentieverhoudingen, maar ook voor de verbetering van het dierenwelzijn in andere EU-lidstaten

Sharon Dijksma  
Brief aan de Tweede Kamer  
4 oktober 2013

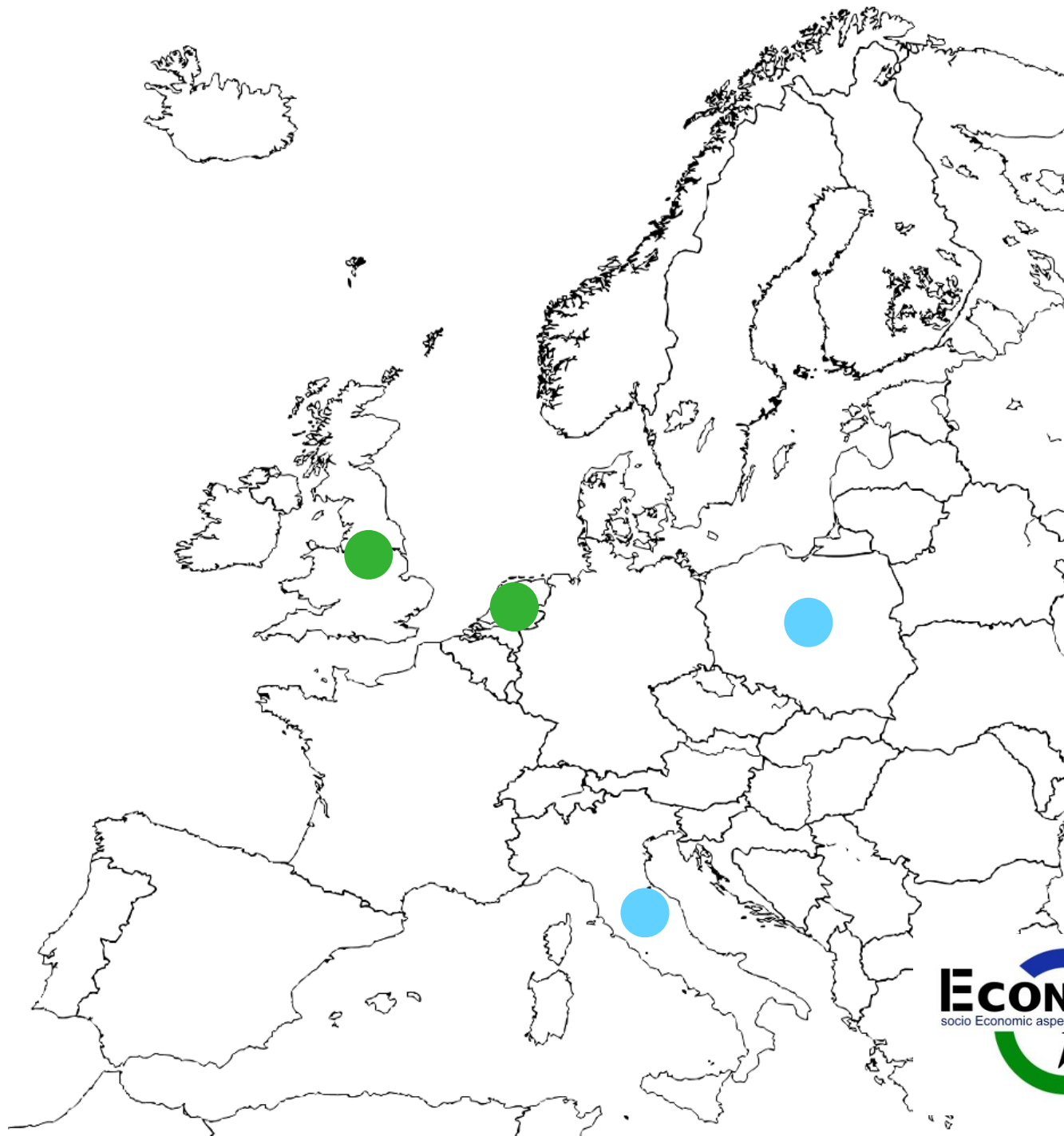
A black and white outline map of Europe, showing the continent's borders and major islands. The map is positioned in the background of the slide, with the text overlaid on the left side.

## Zijn we koploper?

- Wet- & regelgeving
- Onderzoek & onderwijs
- Maatschappelijke betrokkenheid



Wetgeving



---

# Higher welfare only through legislation?

---

## *Chain actors in Netherlands and UK*

- Minimum equal level is necessary to create level playing field for competition
- Enforcement of existing legislation is urgent, and will create sufficient level of animal welfare
- Higher animal welfare through more legislation endangers EU competitive position on world market

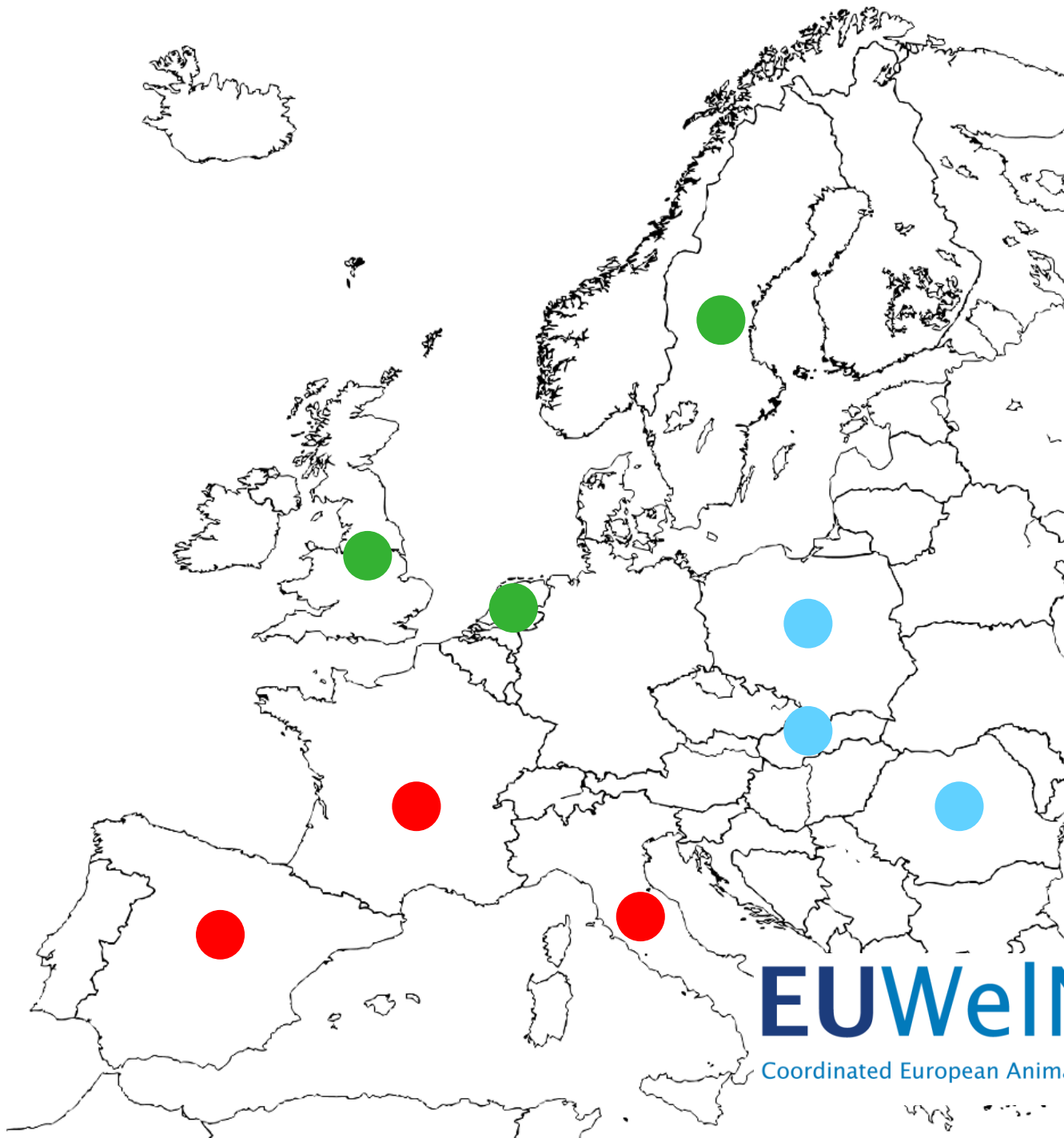
---

# Higher welfare only through legislation?

---

## *Chain actors in Poland and Italy*

- Minimum equal level is necessary to create level playing field for competition, **but**
- Legislation should be adapted to local geographical conditions (climate, breeds, production systems)
- When farmers recognise the advantage of legislation for the productivity of the animals, it will more easily be accepted



**EUWeNet**   
Coordinated European Animal Welfare Network



# National versus EU legislation in nine study countries

**EUWeINet** 

Coordinated European Animal Welfare Network

	<b>National Legislation</b>	<b>National vs EU – Status</b>	<b>National vs EU – Differences</b>
<b>PL</b>	No specific policy on animal welfare.	National legislation is at exactly the same level as the EU.	No difference.
<b>RO</b>	No specific policy on animal welfare.	National legislation is at exactly the same level as the EU.	No difference.
<b>SK</b>	No specific policy on animal welfare.	National legislation is at exactly the same level as the EU.	No difference.



# National versus EU legislation in nine study countries

**EUWeINet** 

Coordinated European Animal Welfare Network

	<b>National Legislation</b>	<b>National vs EU – Status</b>	<b>National vs EU – Differences</b>
<b>IT</b>	National Plan for Animal Welfare (PNBA).	National legislation is at exactly the same level as the EU.	No difference.
<b>FR</b>	National policy on animal welfare.	National legislation is at exactly the same level as the EU.	No difference.
<b>ES</b>	National policy closely aligned to EU directives and the regulation.	National legislation is at exactly the same level as the EU.	No difference.

# National versus EU legislation in nine study countries

**EUWeINet** 

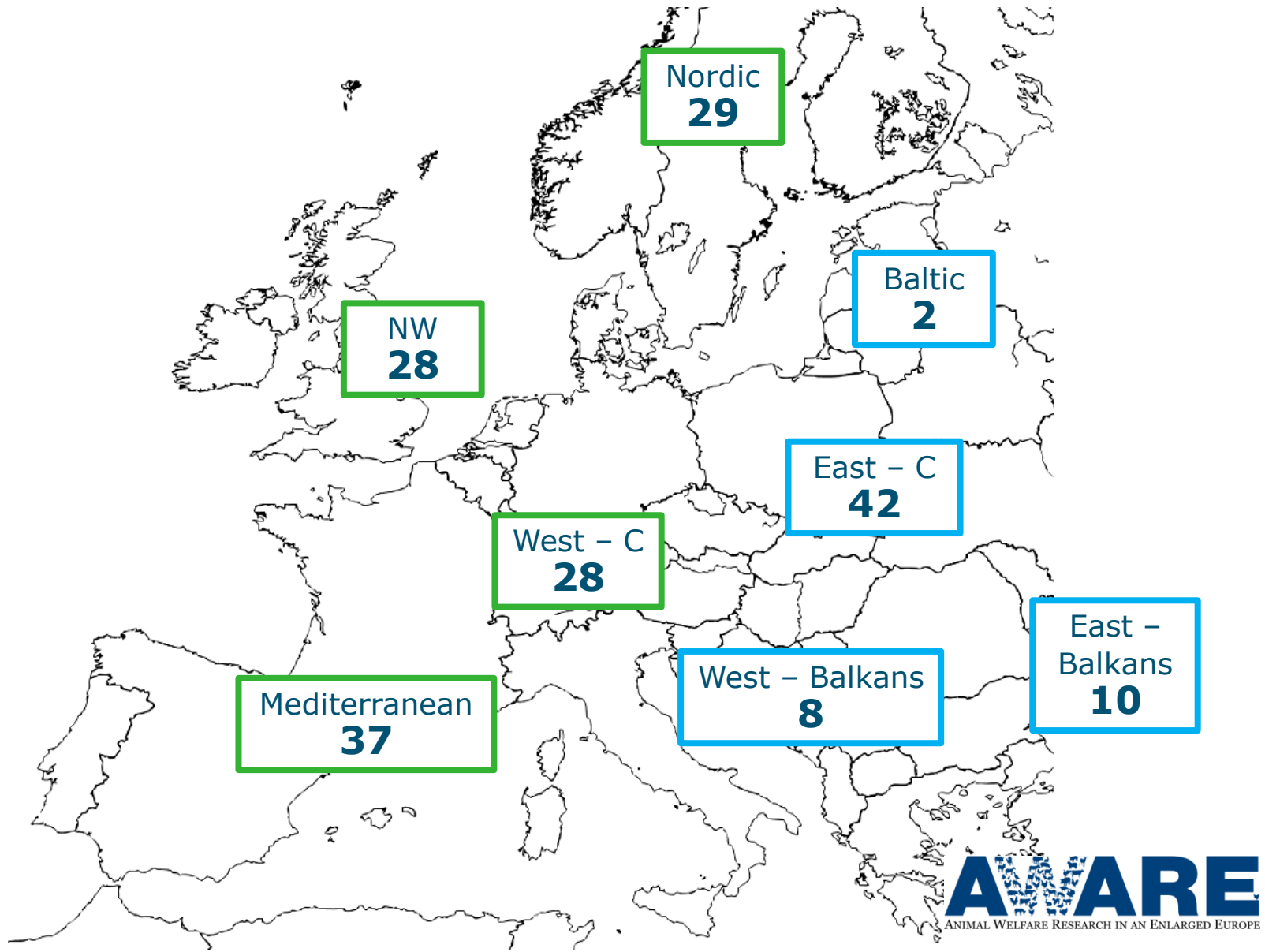
Coordinated European Animal Welfare Network

	<b>National Legislation</b>	<b>National vs EU – Status</b>	<b>National vs EU – Differences</b>
<b>SE</b>	Yes. Various instruments.	Ahead of EU legislation for meat chickens, pigs and slaughter.	Includes a complete ban on slaughter without pre-stunning.
<b>UK</b>	Yes. Various instruments.	Ahead of EU Directives for meat chickens and pigs.	Some stricter or more detailed national rules.
<b>NL</b>	Yes. Various instruments.	Ahead of EU legislation for meat chickens and pigs.	Tightens regulations a bit

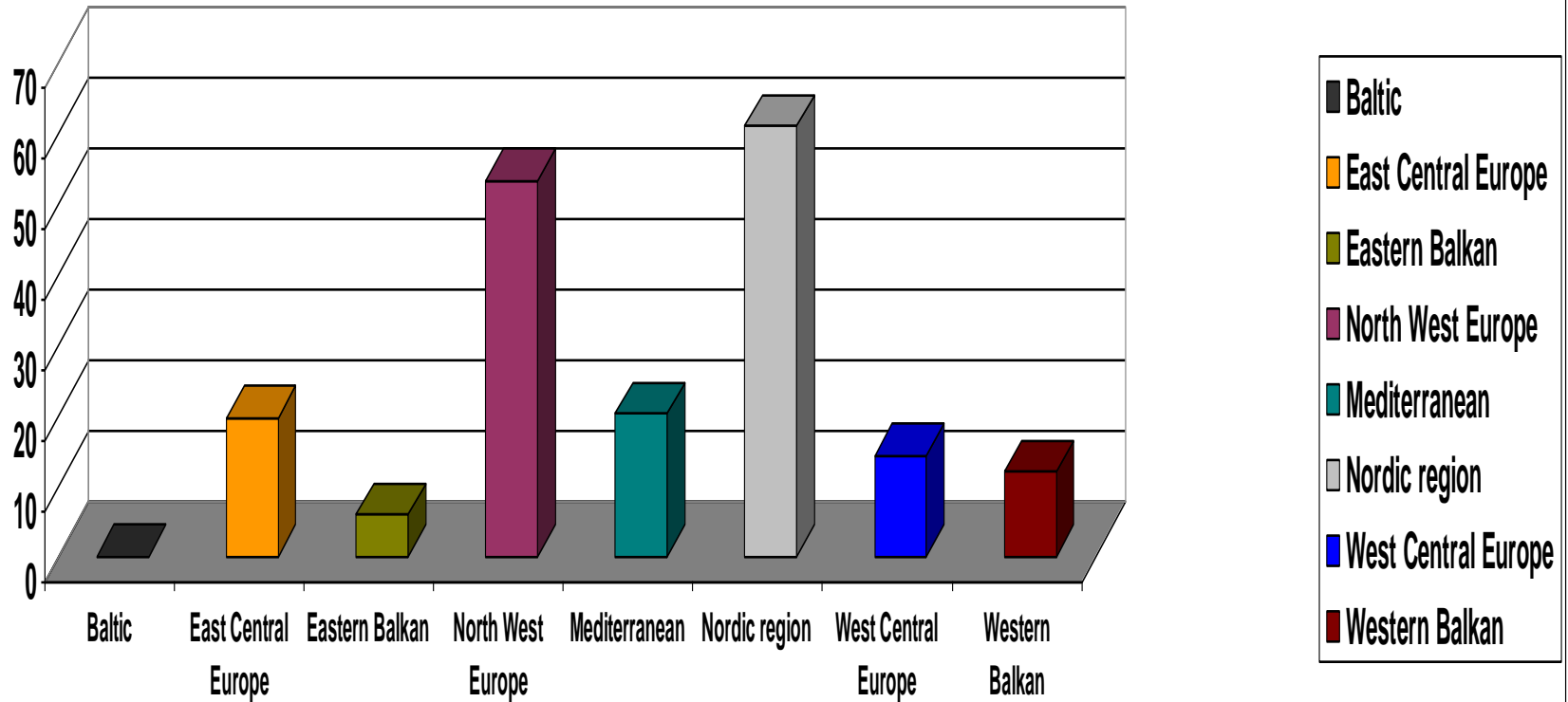
An outline map of Europe showing national borders. The map is centered on the continent, with the British Isles to the west, Scandinavia to the north, and the Mediterranean region to the south. The text 'Onderzoek & onderwijs' is overlaid in the center of the map.

Onderzoek & onderwijs

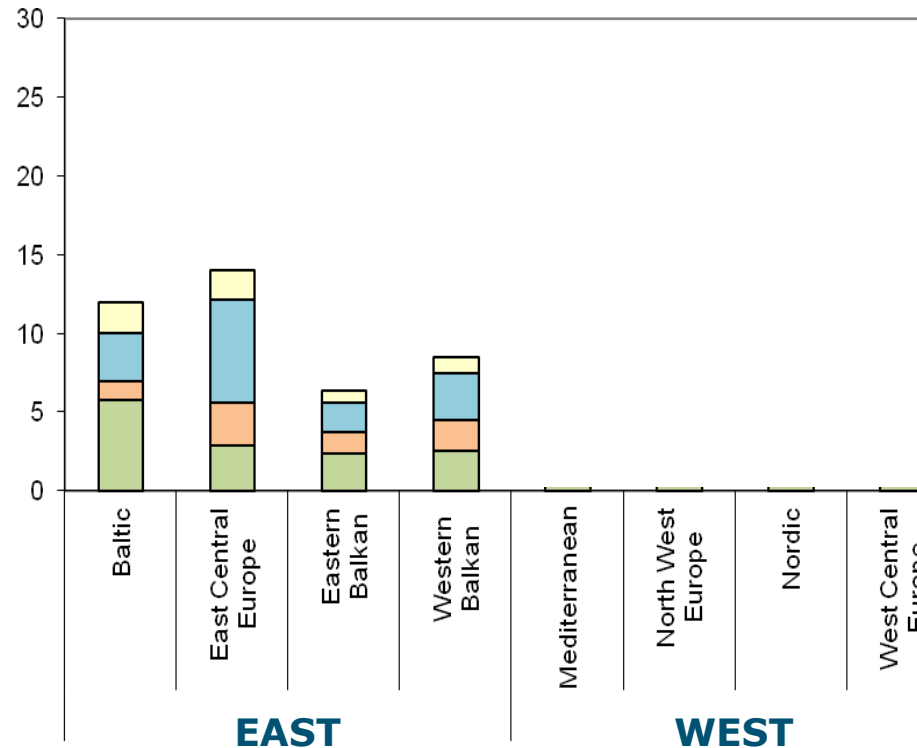
# 184 farm animal welfare courses by region



# Average teaching hours - MSc Animal Welfare

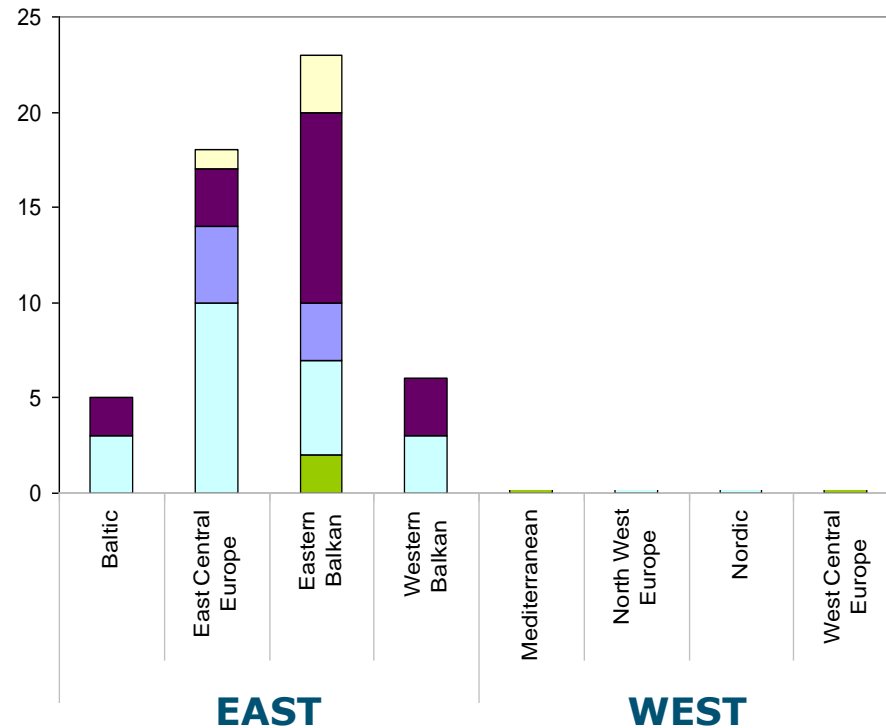


# Average # of persons involved in FAW research



■ senior researchers ■ PhD students ■ undergraduate/graduate students ■ technical staff

# Additional FAW research funding

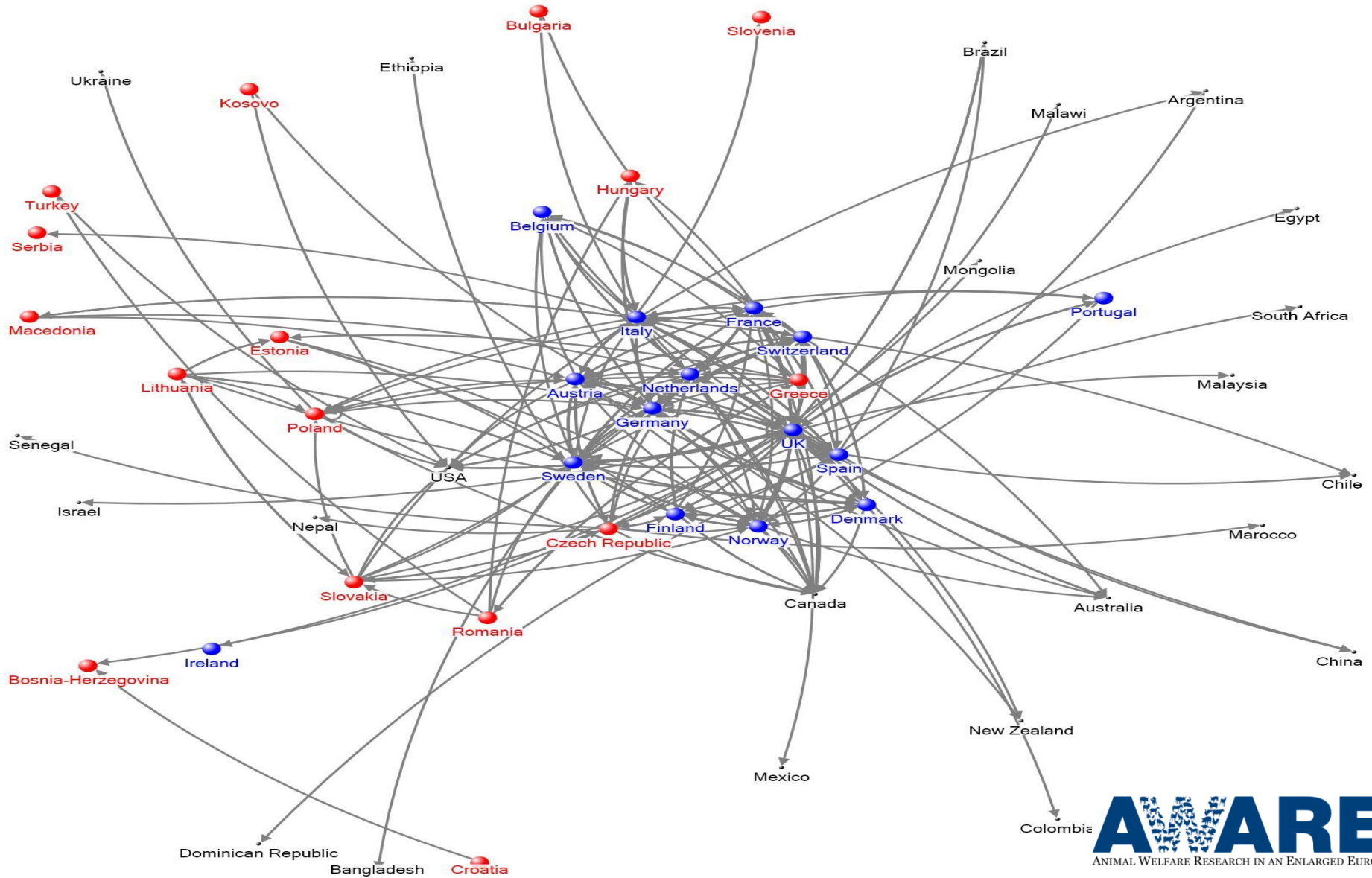


■ Internationally ■ Nationally ■ Both ■ None ■ NA

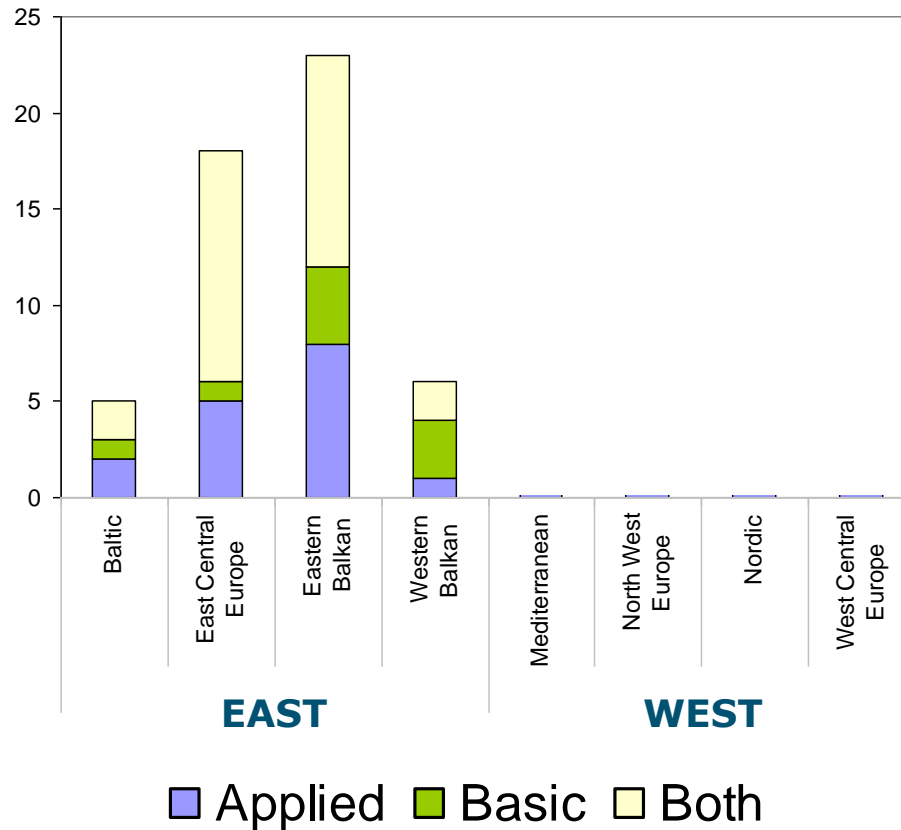
nEast=52, nWest=74;  $\text{Chi}^2=28.783$ ;  $p<0.001$



# FAW academic network



# Scope of FAW research: applied vs. basic



nEast=52, nWest=74;  $\text{Chi}^2=7.7$ ;  $p=0.021$



**Maatschappelijke aandacht**



**SCHUD DEN HAAG NÚ WAKKER!**

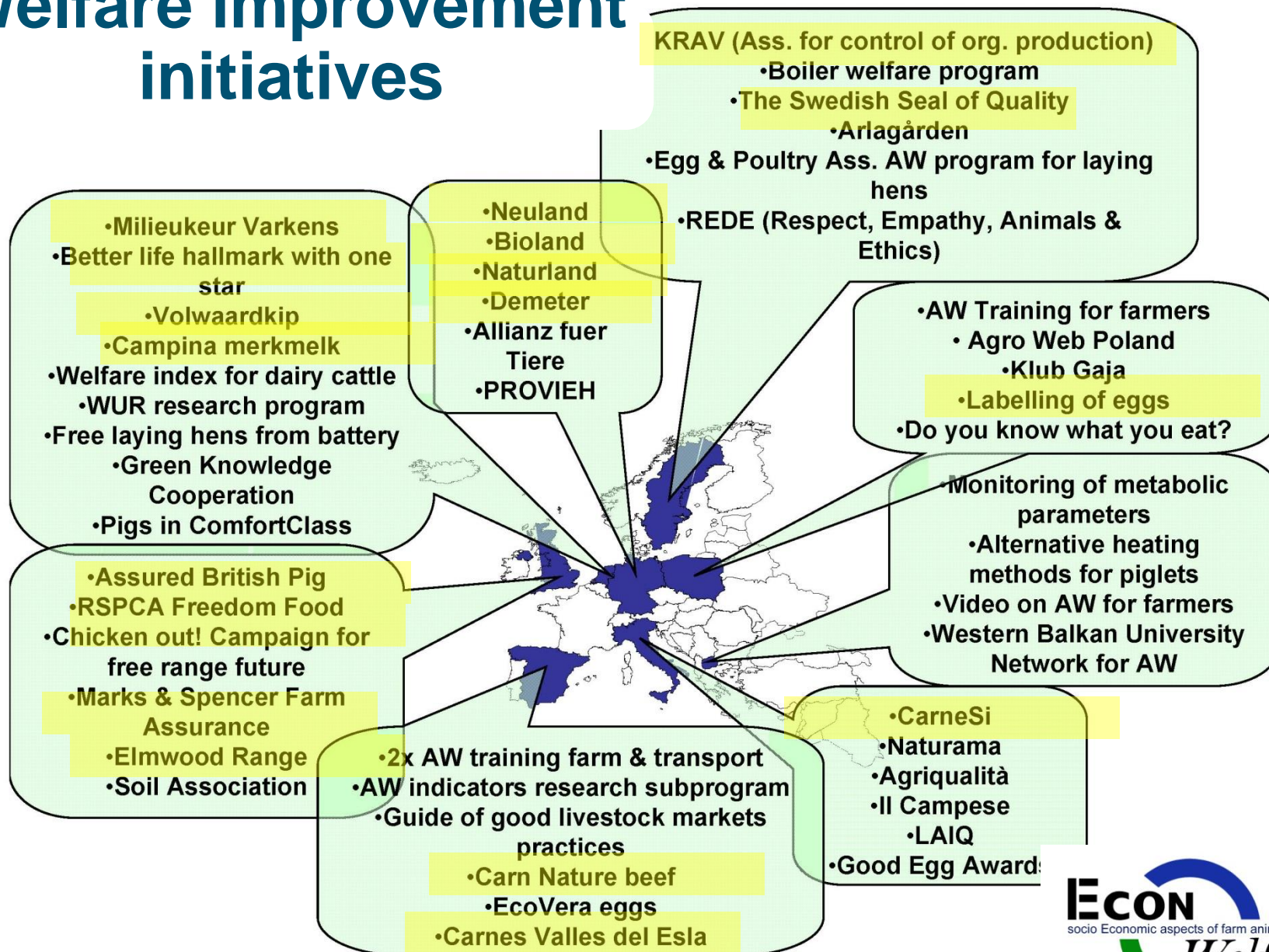


**KIES PARTIJ VOOR DE DIEREN**

**WWW.PARTIJVOORDEDIEREN.NL**

**PARTIJ VOOR DE DIEREN**

# Welfare improvement initiatives



An outline map of Europe with three text overlays. The text 'Government will guarantee good welfare' is positioned in the upper central part of the map. The text ''The Market' should take the lead' is on the left side. The text 'EU legislation should be enough' is on the right side. The text 'Good local quality = good welfare' is at the bottom center. A logo for 'Welfare Quality' is in the bottom right corner.

Government will  
guarantee good welfare

'The Market' should  
take the lead

EU legislation should  
be enough

Good local quality =  
good welfare





RAAD VOOR DIERENAANGELEGENHEDEN



Polderend kom je verder....!

- In Oost Europa nauwelijks overleg tussen stakeholders
- In NW Europa "knuffelen we elkaar soms dood"

A black and white outline map of Europe, showing the continent's borders and major islands. The map is positioned in the background of the slide.

## Zijn we koploper?

- Wet- & regelgeving: we lopen mede voorop
- Onderwijs & onderzoek: relatief veel tijd & aandacht
- Maatschappelijke betrokkenheid: samenwerking tussen overheid, bedrijfsleven & NGO's is top