

Hitting Hotspots: Spatial Targeting of Malaria for Control and Elimination

Teun Bousema^{1,2,3*}, Jamie T. Griffin⁴, Robert W. Sauerwein², David L. Smith⁵, Thomas S. Churcher⁴, Willem Takken⁶, Azra Ghani⁴, Chris Drakeley¹, Roly Gosling⁷

1 Department of Immunity and Infection, London School of Hygiene and Tropical Medicine, London, United Kingdom, **2** Department of Medical Microbiology, Radboud University Nijmegen Medical Centre, Nijmegen, The Netherlands, **3** Department of Epidemiology, Biostatistics, and HTA, Radboud University Nijmegen Medical Centre, Nijmegen, The Netherlands, **4** Department of Infectious Disease Epidemiology, MRC Centre for Outbreak Analysis and Modeling, Imperial College London, London, United Kingdom, **5** Johns Hopkins Malaria Research Institute and Department of Epidemiology, Johns Hopkins Bloomberg School of Public Health, Baltimore, Maryland, United States of America, **6** Laboratory of Entomology, Wageningen University and Research Centre, Wageningen, The Netherlands, **7** Global Health Group, University of California, San Francisco, San Francisco, California, United States of America

Introduction

Current malaria elimination guidelines are based on the concept that malaria transmission becomes heterogeneous in the later phases of malaria elimination [1]. In the pre-elimination and elimination phases, interventions have to be targeted to entire villages or towns with higher malaria incidence until only individual episodes of malaria remain and become the centre of attention [1]. With increasing evidence of clustering of malaria episodes within villages, we argue that there is an intermediate step. Heterogeneity in malaria transmission within villages is present long before areas enter the pre-elimination phase, and identifying and targeting hotspots of malaria transmission should form the cornerstone of both successful malaria control and malaria elimination.

Heterogeneity, Clustering, Transmission Foci, and Hotspots

Variation in the risk of malaria between villages in endemic regions has long been recognized [2–4]. This variation is common for many infectious and parasitic diseases where a small number of human hosts are most frequently or most heavily infected while the majority of a local population carry few or no infections [5–8]. In malaria, this is exemplified by a study in Dielmo, Senegal, where children were monitored daily during their first 2 years of life. Some children suffered only one episode of clinical malaria, whilst others suffered up to 20 episodes [9]. In Kenya, researchers noted that malaria exposure could not be homog-

enous as malaria incidence did not follow a Poisson distribution, a phenomenon they describe as over-dispersion [10]. Over-dispersion is commonly recognized in other infectious diseases, where a small proportion (20%) of the population is responsible for the majority (80%) of transmission, the so-called “20/80 rule” [8,11–13].

Micro-epidemiological variations in malaria exposure are most easily recognized in areas of low or moderate transmission intensity where a considerable proportion of the population may remain malaria free for several years while others experience multiple episodes [8,11,14]. In areas exposed to intense malaria transmission, heterogeneity in exposure is also present [15,16], but may be obscured because the majority of the population experiences at least one infection per year and many infections are carried asymptotically. At present, the factors underlying the micro-epidemiology of malaria are not fully understood but include variation in dis-

tance to the nearest mosquito breeding site, water body or vegetation [14–17], household structural features [14–17], and both human behavioural [15,17] and genetic factors [15,17] that may also result in differential attractiveness to mosquitoes [18]. These factors differ at global and local geographical scales and lead to different and confusing definitions of foci of malaria transmission and hotspots of malaria transmission. Entire countries or islands have been classified as malaria hotspots [19,20], or the term hotspots of malaria transmission may be reserved for smaller geographical areas [14,21–23], sometimes smaller than 1 km² [22,23].

Defining a Hotspot of Malaria Transmission

Two related but distinct geographical units in malaria transmission can be defined: (1) The World Health Organization defines a focus of malaria transmission

Citation: Bousema T, Griffin JT, Sauerwein RW, Smith DL, Churcher TS, et al. (2012) Hitting Hotspots: Spatial Targeting of Malaria for Control and Elimination. *PLoS Med* 9(1): e1001165. doi:10.1371/journal.pmed.1001165

Published: January 31, 2012

Copyright: © 2012 Bousema et al. This is an open-access article distributed under the terms of the Creative Commons Attribution License, which permits unrestricted use, distribution, and reproduction in any medium, provided the original author and source are credited.

Funding: This work was supported by the Bill & Melinda Gates Foundation 51991 to Teun Bousema. Roly Gosling is supported through grants from the Bill & Melinda Gates Foundation and ExxonMobil to the Global Health Group at the University of California, San Francisco. Chris Drakeley is supported by the Wellcome Trust (UK), Jamie Griffin by a fellowship from the UK Medical Research Council, Azra Ghani by the Bill & Melinda Gates Vaccine Modeling Initiative and the UK Medical Research Council, Tom Churcher by the European Commission FP7 Collaborative project TransMalariaBloc (HEALTH-F3-2008-223736), and David L. Smith by the RAPIDD program of the Science & Technology Directorate, Department of Homeland Security, and the Fogarty International Center, National Institutes of Health (<http://www.fic.nih.gov>). The funders had no role in study design, data collection and analysis, decision to publish, or preparation of the manuscript.

Competing Interests: AG was paid by GSK to attend a single advisory board meeting in December 2009 on how to develop models for the economic evaluation of RTSS. Currently she has a collaborative agreement with GSK to re-analyse RTSS Phase II trial data, which is managed via Imperial College but does not involve monetary exchange and under which the company does not have final decision on publication. None of these activities relates to this article on hotspots. All other authors have declared that no competing interests exist.

Abbreviations: IRS, indoor residual spraying; LLIN, long-lasting insecticide-treated net; MDA, mass drug administration

* E-mail: teun.bousema@lshtm.ac.uk

Provenance: Not commissioned; externally peer reviewed.

The Policy Forum allows health policy makers around the world to discuss challenges and opportunities for improving health care in their societies.

Summary Points

- Heterogeneity is a common facet of infectious diseases, whereby infection and disease are concentrated in a small proportion of individuals.
- In malaria, heterogeneity is manifested as small groups of households, or hotspots, that are at a substantially increased risk of malaria transmission.
- These hotspots exist in all transmission settings but are less easily detected at high transmission intensity.
- Hotspots maintain transmission in low transmission seasons and fuel transmission in the high transmission seasons.
- Targeting hotspots is a highly efficient way to reduce malaria transmission at all levels of transmission intensity.

as a defined and circumscribed locality situated in a currently or former malarious area containing the continuous or intermittent epidemiological factors necessary for malaria transmission. Foci of malaria transmission can be classified as residual active, residual nonactive, cleared up, new potential, new active, endemic, or pseudofoci [1]. In more academic terms, an active focus of malaria transmission is a geographical area that supports malaria transmission, where the local *Anopheles* population sustains the basic reproductive rate (R_0 ; average number of secondary infections arising in a susceptible population as a result of a single individual with malaria over the course of their malaria infection) at a level above 1 [16]. Its size depends on the mosquito breeding site that forms the centre of the focus and the effective dispersal range of vector mosquitoes, which is several kilometres. The border is the furthest location where malaria is still supported by the breeding site. (2) A hotspot of malaria transmission is defined as a geographical part of a focus of malaria transmission where transmission intensity exceeds the average level. Several hotspots of malaria transmission may be present in a single focus of malaria transmission. Micro-epidemiological conditions for malaria transmission are favourable in a hotspot of malaria transmission, resulting in R_0 estimates that exceed the average for the focus of malaria transmission. The size of a hotspot of malaria transmission is variable but typically $<1 \text{ km}^2$ and smaller than the maximum dispersal range of vector mosquitoes; its borders are defined by the distance from the centre of the hotspot where transmission intensity is no longer (statistically significantly) higher than the average for the focus of malaria transmission [14,21].

Why Hotspots Are Important in Malaria Transmission

Heterogeneity in mosquito exposure is key to understanding the differences be-

tween foci and hotspots of malaria transmission and their implications for malaria control. Individuals who are bitten most often are most likely to be infected and can amplify transmission by transmitting the malaria parasites to a large number of mosquitoes. Estimates of R_0 are very susceptible to variations in mosquito biting behaviour. R_0 may increase considerably as a consequence of heterogeneity in this behaviour [8,12]; the susceptibility of R_0 to heterogeneous biting is illustrated by Table 1 where estimates of R_0 increased 1.5- to 4.5-fold as a consequence of introducing heterogeneous biting into a mathematical model of malaria [24] in four villages exposed to moderate transmission intensity in northern Tanzania [14].

There are two reasons why hotspots are relevant for malaria control [8,12,25]. Firstly, if interventions are untargeted, hotspots are likely to be the areas where residual malaria transmission will persist. This hypothesis is supported by observations that hotspots of malaria transmission remained unaltered after overall malaria transmission is reduced [22,23,26]. Hotspots of malaria transmission can thereby form a major stumbling block in efforts to eliminate malaria [25].

Secondly, hotspots of malaria transmission are likely to play a catalysing role in areas of stable transmission. Figure 1 shows a schematic of the hotspot theory whereby a few households maintain higher transmission at all time periods. In the dry season the hotspot supports continuing transmission; in the wet season it acts as a source of infection for the rest of the village. This exemplifies the difference between hotspots and foci of malaria transmission: hotspots fuel transmission within transmission foci, whereas foci form independent malarious areas that may contain hotspots. Only the emigration of human parasite carriers or transportation of infectious mosquitoes can result in a spread of parasites beyond the borders of a focus. Interventions targeted at transmission hot-

spots, but not foci of malaria transmission, therefore have the potential to reduce community-wide malaria transmission. Using the same mathematical model [24] and the same dataset from northern Tanzania [14], we show that targeting hotspots with long-lasting insecticide-treated nets (LLINs) and indoor residual spraying (IRS) could lead to malaria elimination while untargeted interventions with the same resources would lead to more modest reductions in malaria parasite prevalence (Figure 2A). In areas of higher endemicity, targeted interventions alone are unlikely to result in malaria elimination. Nevertheless, also in these settings, targeted interventions have a markedly larger impact compared to untargeted interventions with the same resources (Figure 2B).

Detecting Malaria Transmission Hotspots

Having argued that hotspots should be targeted, the next obvious question is how can they be identified? Spatial patterns in malaria transmission have been described using (combinations of) micro-epidemiological elevations in malaria incidence [11,14,21,22,27], asymptomatic parasite carriage [21,22], reported fever [28], drug use [28], serological responses to malaria-specific antigens [14,29,30], mosquito abundance [14,30], and exposure to infected mosquitoes [14,30]. Environmental models are very valuable in defining (larger) foci of malaria transmission [31], but currently have limited resolution in identifying small-scale hotspots of malaria transmission within foci of malaria transmission [14,21].

The most direct evidence of hotspots of malaria transmission is gained by finding an increased exposure to infectious mosquito bites. However, this gold standard measure for defining transmission intensity is extremely laborious and has low sensitivity at low transmission intensity. Furthermore, mosquito sampling strategies for outdoor biting and resting mosquitoes are poorly standardized despite their increasing relevance for transmission [32]. These limitations render an entomological detection of hotspots logistically unattractive.

Clustering of asexual parasite carriage and malaria-specific immune responses currently appear to be the most robust indicators of hotspots of malaria transmission. Incidence of clinical malaria episodes is frequently used as an indicator for increased malaria exposure. However, it should not be used for detecting hotspots unless in an age group defined by low immunity, such as infants or young chil-

Table 1. Estimates of the basic reproductive number (R_0) for a given parasite prevalence and heterogeneous mosquito exposure in four villages in northern Tanzania.

Estimate	Manundu	Kilole	Kwagunda	Mkwakwani
Parasite prevalence in 2–9-year-old children	3.3%	8.8%	14.8%	34.0%
Average mosquito exposure in the wet season, mean (standard deviation)	5.1 (22.0)	11.0 (29.6)	19.9 (15.9)	18.9 (19.7)
R_0 assuming homogeneous mosquito exposure	1.4	1.9	2.5	5
R_0 assuming heterogeneous mosquito exposure	5.2	8.7	3.7	11.5

R_0 was calculated by adjusting the mean mosquito exposure to match the equilibrium parasite prevalence for each village, with either homogeneous mosquito exposure or with variation in exposure with the same ratio of standard deviation to mean as observed in that village.

doi:10.1371/journal.pmed.1001165.t001

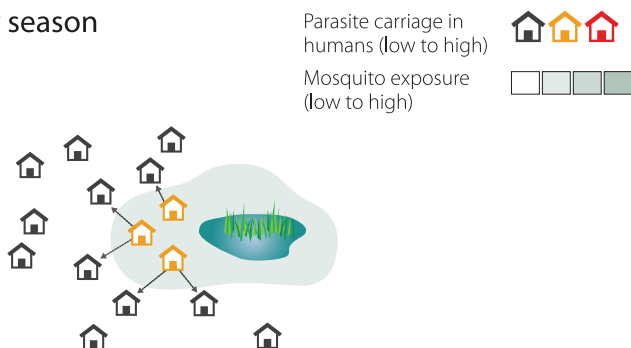
dren, because the higher malaria exposure in hotspots leads to a faster acquisition of immunity against clinical malaria and high density parasitaemia [33]. The likelihood of developing symptoms upon infection may, therefore, be lower in hotspots of malaria transmission. Clustering of asexual parasite carriage forms a more stable indicator of hotspots of malaria transmission than clinical malaria episodes [21], since immunity that prevents malaria infection is acquired later in life, if at all. Antibody responses to malaria-specific antigens can also be used to define small-scale variations in malaria exposure

[14,29,34]. Because antibody responses are acquired with cumulative exposure and are relatively long-lived, serological markers of malaria exposure are most suitable for detecting stable hotspots of malaria transmission [14] in areas of lower endemicity and can be derived from simple health facility-based surveys [14,35]. Antibody responses can be analysed as age-dependent sero-conversion rate [14,36], individual antibody prevalence, or (age-adjusted) individual antibody density [21,29,36]. The most suitable approach will depend on the study setting, notably the average level of transmission intensity,

and the resolution at which hotspots can (or need to) be detected.

Compared to settings of moderate to low transmission intensity, little research has been done on operational ways to detect hotspots in areas of more intense transmission intensity. Spatial heterogeneity in malaria exposure is common in high endemic settings [15,26,36,37]. Hotspots of malaria transmission, as defined in this manuscript, have been identified by geographical clusters of parasite carriage [26,36–38] and malaria incidence [15]. Serological markers of malaria exposure have been used in high endemic settings [36], but their value for detecting hotspots of malaria transmission against a background of intense transmission intensity remains to be confirmed.

A. Dry season



B. Wet season

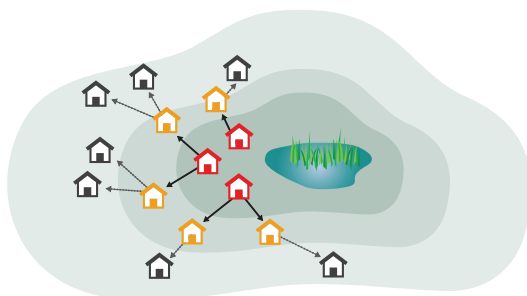


Figure 1. Hotspots of malaria transmission in the dry and wet season. Mosquito exposure and parasite carriage are highly focal in the dry season (A). People living in hotspots are exposed to higher mosquito densities and, because individuals in households belonging to hotspots are more likely to be infected and infectious, mosquitoes are more likely to acquire a malaria infection in these households. In the wet season, as mosquito density and geographic distribution increase, infectious mosquitoes drive infection out into the rest of the village (B).
doi:10.1371/journal.pmed.1001165.g001

Practical Arguments That Could Hinder Targeted Control

Three important arguments on hotspots need to be addressed. Firstly, are hotspots stable over time? This is important for practical reasons. Some consistency in the geographical location of hotspots would make implementation of control methods much easier. The predominant observation is that hotspots are remarkably stable even when the intensity of transmission declines [14,21–23,26,39,40]. However, clusters of higher clinical incidence may vary with time [21,39], especially in settings where outbreaks are related to movement patterns of infected human parasite carriers [22]. In coastal Kenya, evidence was found for the presence of stable and unstable hotspots within the same study population [21].

Secondly, do hotspots seed transmission to the rest of the focus of malaria transmission? The theory behind hotspots fuelling transmission (Figure 1) is supported by several entomological studies that show very focal mosquito exposure in the dry season and more wide-spread mosquito exposure in the wet season while the same households experience the highest

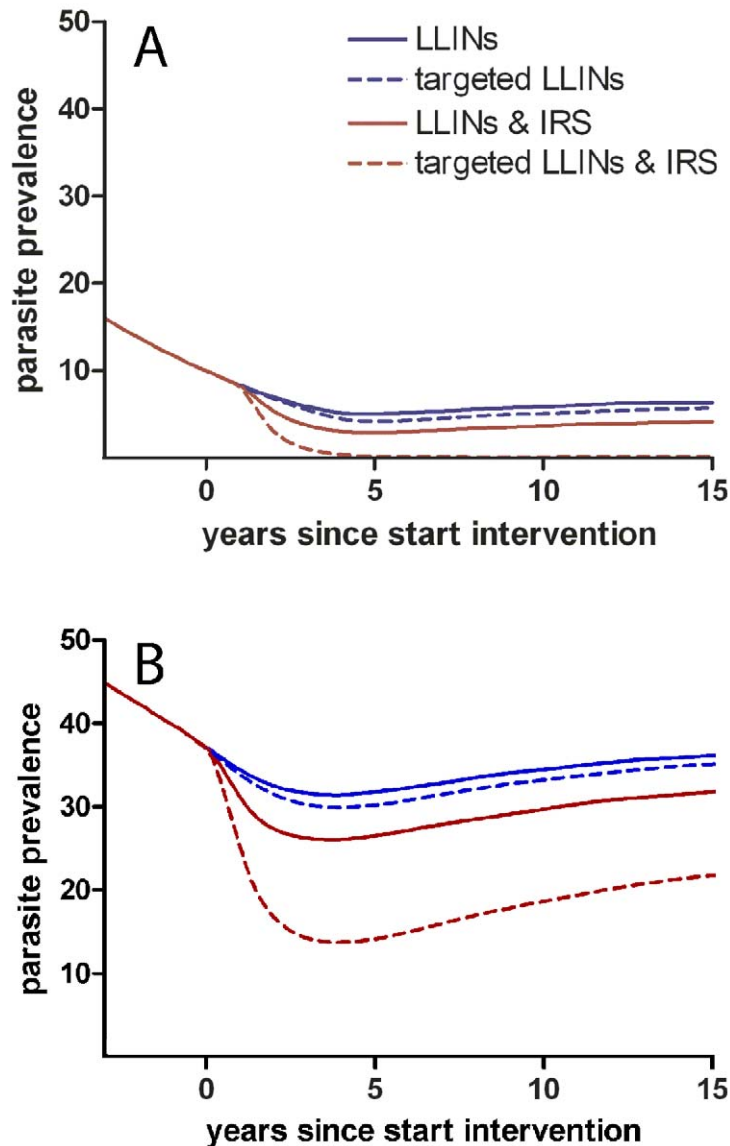


Figure 2. Targeted and untargeted interventions with long-lasting LLINs and IRS in a malaria elimination scenario. The simulations for the low endemic setting with a baseline parasite prevalence of ~15% in the general population (A) are based on parasite prevalence and mosquito exposure data from Korogwe, northern Tanzania (2008) [14]. Effective coverage with LLINs is scaled up over 6 years to 60% prior to the intervention, creating a starting point for interventions aiming towards malaria elimination [59]. Subsequently, the impact of four intervention strategies is simulated using an individual-based simulation model [24]: (i) increasing LLIN coverage to 80% in an untargeted manner (blue solid line); (ii) increasing LLIN coverage with the same number of LLINs but preferentially targeting hotspots where 90% coverage is reached (dashed blue line); (iii) increasing LLIN coverage to 80% and yearly introducing IRS at 20% coverage in an untargeted manner (red solid line); (iv) a targeted approach using the same resources as the third scenario, reaching 90% effective coverage with LLINs and 90% effective coverage with yearly IRS in hotspots (dashed red line). LLINs were replaced every 4 years. Simulations were repeated for an area of high endemicity with a parasite prevalence of ~40% in the general population (B).
doi:10.1371/journal.pmed.1001165.g002

relative mosquito [14,41–44] and the highest parasite prevalence in the different seasons [14]. In some areas of low transmission intensity, these persisting hotspots form the only likely source of parasites for

seasonal or epidemic increases in malaria transmission in the wider community [22,40]. Against this are observations that suggest that movement of some vector species is highly localized [45], thereby

limiting the spread of malaria from a hotspot to the rest of the village. A study in Tanzania where mosquitoes were captured, marked with fluorescent powder, released, and recaptured observed that 68% of mosquitoes returned to the same household from where they were initially captured [46]. In Papua New Guinea mosquitoes appeared to have a “memorized” home range and limited dispersal range in the focus of malaria transmission they are accustomed to [47]. This nonrandom mixing could have important epidemiological consequences for strategies to control hotspots and would lead to overestimations of impact of hotspot-targeted interventions. In the extreme scenario where mosquito populations do not mix, there would be no community benefit of hotspot targeted interventions. This issue should be addressed in formal evaluations of the community effects of targeted interventions on malaria transmission.

Thirdly, at what geographical resolution can hotspots be detected? The scale at which hotspots are present will greatly influence the feasibility of their identification. Hotspots that are present as geographically clustered groups of households can be more readily identified than smaller hotspots such as individual households. Hotspots may be also more complicated to detect in high endemic settings where the prevalence of malaria parasites and malaria-specific antibodies are high. In these settings, alternative approaches may be needed to determine small-scale variations in transmission intensity. These may include contact tracing of individuals with clinical malaria in the youngest, least immune age groups through health surveillance data or school surveys. More intensive surveillance systems may be capable of combining parasite prevalence and antibody prevalence or sero-conversion rates in young age groups, or examine the number of parasite clones acquired over a certain time period, i.e., the molecular force of infection, once tools are optimised [48].

When to Target Hotspots of Malaria Transmission

Spatially targeted interventions will not replace the current practice where LLINs and intermittent preventive treatment (IPT) are preferentially provided to young children and pregnant women, groups that are at the highest risk of severe disease. Rather, it will supplement this approach that aims to reduce severe morbidity and mortality with an approach that specifically aims to reduce malaria transmission. Following scaling up in moderate and low

transmission settings where malaria transmission is highly heterogeneous, hotspot-targeted interventions form a logistically attractive alternative to untargeted interventions that may need coverage levels nearing 100% to drive transmission lower [8,12,14]. To be financially attractive, the costs of detecting hotspots need to be outweighed by the savings made by targeting only a proportion of the total population. For low transmission areas such as those in pre-elimination or elimination phases of malaria control (i.e., malaria incidence below 5 episodes per 1,000 person-years at risk) and in areas that have succeeded in elimination and are preventing re-introduction, the outcome of this equation is very likely to support hotspot-targeted interventions [25]. Hotspot-targeted interventions will also accelerate malaria control in areas of higher endemicity but will require a low-cost and operationally attractive detection system to be financially attractive.

How to Target Hotspots of Malaria Transmission

The nature of malaria transmission in hotspots, intense mosquito exposure, and high levels of (asymptomatic) parasite carriage in the human population, will require a combination of interventions that target both the human and vector hosts. In addition to scaling up conventional vector control tools such as LLINs and IRS, several less commonly used tools may be particularly suited for hotspots.

Targeted Vector Control Activities

Conventional vector control activities have largely focused on indoor biting and resting malaria vectors. The role of outdoor biting mosquitoes in malaria transmission is increasingly recognised and their relative importance is increasing with improved coverage of insecticide treated nets and IRS [32,49]; this poses challenges for vector control that may have to incorporate more laborious components to target outdoor biting vectors. Larviciding of mosquito breeding sites [50] and adult vector control by entomopathogenic fungi [51] both require frequent re-application. Such operational constraints have discouraged widespread adoption, but they may be utilized to great

effect as part of a targeting strategy. Similarly, the cost and current efficacy of mosquito traps baited with synthetic human odours [52,53] make them unlikely candidates to be included in efforts to reduce vector populations at community level although they may hold promise as part of targeted interventions.

Targeted Interventions to Reduce the Human Infectious Reservoir

The increased parasite biomass in hotspots of malaria transmission in the form of symptomatic and asymptomatic parasite carriers [54] offers the opportunity to reduce malaria transmission by clearing the human parasite reservoir with antimalarial drugs. One possible strategy would be reactive screening and treatment of households and neighbours of individuals who are diagnosed with malaria at health facilities [25]. This approach can be taken a step further by proactive case detection, where people in hotspots are screened for parasitaemia at regular intervals [25]. The most inclusive approach to clear infections in humans, including those that are present at densities below the detection limit of rapid diagnostic tests or microscopy [55] is to give mass drug administration (MDA) where a full therapeutic dose of drugs are administered to a population without prior screening. MDA is a logistically demanding intervention that may need to be repeated several times to maximize its impact [56]. MDA is receiving renewed interest but targeted MDA may be more efficient and high local coverage is more operationally feasible. All three options would ideally employ a drug that actively clears both asexual parasites and gametocytes to rapidly render the treated individual noninfectious [57].

Targeted Vaccination

Once malaria vaccines become available, they will not only be employed to protect high risk groups against disease and death of malaria but can also play a role in reducing the transmission of malaria. These vaccines that interrupt malaria transmission (VIMT) include vaccines targeting the transmission stages of the parasite and vaccines that reduce the production of gametocytes by targeting pre-erythrocytic and asexual blood stages [58]. Because all

age groups contribute to malaria transmission [57], VIMT may need to be administered to all age groups to see an impact. There is currently no infrastructure available for community-wide vaccination campaigns and a targeted approach may therefore be more operationally feasible.

Conclusions

Malaria hotspots appear to maintain malaria transmission in low transmission seasons and are the driving force for transmission in the high transmission season. Targeting the hotspots would mean the most infected and most diseased households would be prioritized with the added benefits of reducing transmission to the whole community. Identifying the hotspots is possible by mapping asymptomatic carriers or using serological tools. Treating hotspots by ensuring high coverage of interventions for a few households is likely to be easier and much more efficient, and may allow for more complicated interventions than using untargeted approaches. The recent successes of scaling up interventions for impact on malaria have revealed the policy gap of what to do afterwards when coverage is good yet malaria transmission continues. In this paper we have argued that the next evidence-based step is to tackle malaria hotspots. Although knowledge gaps exist, we argue that hotspot-targeted interventions should take place at all transmission levels where resources are sufficient and rapid reductions in malaria transmission will be seen.

Acknowledgments

Graphic design was supported by Kirsten Svendsen at the Global Health Group.

Author Contributions

Conceived and designed the experiments: TB JTG CD RG. Performed the experiments: TB JTG TSC. Analyzed the data: TB JTG TSC DLS AG. Contributed reagents/materials/analysis tools: JTG TSC AG. Wrote the first draft of the manuscript: TB CD RG. Contributed to the writing of the manuscript: TB JTG RWS DLS TSC WT AG CD RG. ICMJE criteria for authorship read and met: TB JTG RWS DLS TSC WT AG CD RG. Agree with manuscript results and conclusions: TB JTG RWS DLS TSC WT AG CD RG.

References

- World Health Organization (2007) Malaria elimination: a field manual for low and moderate endemic countries. Geneva: WHO.
- Snow RW, Rowan KM, Lindsay SW, Greenwood BM (1988) A trial of bed nets (mosquito nets) as a malaria control strategy in a rural area of The Gambia, West Africa. *Trans R Soc Trop Med Hyg* 82: 212–215.
- Greenwood BM (1989) The microepidemiology of malaria and its importance to malaria control. *Trans R Soc Trop Med Hyg* 83 Suppl: 25–29.
- Greenwood BM, Bradley AK, Greenwood AM, Byass P, Jammeh K, et al. (1987) Mortality and morbidity from malaria among children in a rural

- area of The Gambia, West Africa. *Trans R Soc Trop Med Hyg* 81: 478–486.
5. Manning SD, Woolhouse ME, Ndamba J (1995) Geographic compatibility of the freshwater snail *Bulinus globosus* and schistosomes from the Zimbabwé highveld. *Int J Parasitol* 25: 37–42.
 6. Clements AC, Firth S, Dembele R, Garba A, Toure S, et al. (2009) Use of Bayesian geostatistical prediction to estimate local variations in *Schistosoma haematobium* infection in western Africa. *Bull World Health Organ* 87: 921–929.
 7. Criscione CD, Anderson JD, Sudimack D, Subedi J, Upadhayay RP, et al. (2010) Landscape genetics reveals focal transmission of a human macroparasite. *PLoS Negl Trop Dis* 4: e665. doi:10.1371/journal.pntd.0000665.
 8. Woolhouse ME, Dye C, Etard JF, Smith T, Charlwood JD, et al. (1997) Heterogeneities in the transmission of infectious agents: implications for the design of control programs. *Proc Natl Acad Sci USA* 94: 338–342.
 9. Trape JF, Pison G, Spiegel A, Enel C, Rogier C (2002) Combating malaria in Africa. *Trends Parasitol* 18: 224–230.
 10. Mwangi TW, Fegan G, Williams TN, Kinyanjui SM, Snow RW, et al. (2008) Evidence for over-dispersion in the distribution of clinical malaria episodes in children. *PLoS ONE* 3: e2196. doi:10.1371/journal.pone.0002196.
 11. Clark TD, Greenhouse B, Njama-Meya D, Nzaruaba B, Maiteki-Sebuguzi C, et al. (2008) Factors Determining the Heterogeneity of Malaria Incidence in Children in Kampala, Uganda. *J Infect Dis* 198: 393–400.
 12. Smith DL, McKenzie FE, Snow RW, Hay SI (2007) Revisiting the basic reproductive number for malaria and its implications for malaria control. *PLoS Biol* 5: e42. doi:10.1371/journal.pbio.0050042.
 13. Smith DL, Dushoff J, Snow RW, Hay SI (2005) The entomological inoculation rate and *Plasmodium falciparum* infection in African children. *Nature* 438: 492–495.
 14. Bousema T, Drakeley C, Gesase S, Hashim R, Magesa S, et al. (2010) Identification of hot spots of malaria transmission for targeted malaria control. *J Infect Dis* 201: 1764–1774.
 15. Kreuels B, Kobbe R, Adjei S, Kreuzberg C, von Reden C, et al. (2008) Spatial variation of malaria incidence in young children from a geographically homogeneous area with high endemicity. *J Infect Dis* 197: 85–93.
 16. Carter R, Mendis KN, Roberts D (2000) Spatial targeting of interventions against malaria. *Bull World Health Organ* 78: 1401–1411.
 17. Clark RL (2009) Embryotoxicity of the artemisinin antimalarials and potential consequences for use in women in the first trimester. *Reprod Toxicol* 28: 285–296.
 18. Verhulst NO, Andriessen R, Groenhagen U, Bukovinszki Kiss G, Schulz S, et al. (2010) Differential attraction of malaria mosquitoes to volatile blends produced by human skin bacteria. *PLoS ONE* 5: e15829. doi:10.1371/journal.pone.0015829.
 19. Singh V, Mishra N, Awasthi G, Dash AP, Das A (2009) Why is it important to study malaria epidemiology in India? *Trends Parasitol* 25: 452–457.
 20. Toty C, Barre H, Le Goff G, Larget-Thiers I, Rahola N, et al. (2010) Malaria risk in Corsica, former hot spot of malaria in France. *Malar J* 9: 231.
 21. Bejon P, Williams TN, Liljander A, Noor AM, Wambua J, et al. (2010) Stable and unstable malaria hotspots in longitudinal cohort studies in Kenya. *PLoS Med* 7: e1000304. doi:10.1371/journal.pmed.1000304.
 22. Ernst KC, Adoka SO, Kouwoor DO, Wilson ML, John CC (2006) Malaria hotspot areas in a highland Kenya site are consistent in epidemic and non-epidemic years and are associated with ecological factors. *Malar J* 5: 78.
 23. Bautista CT, Chan AS, Ryan JR, Calampa C, Roper MH, et al. (2006) Epidemiology and spatial analysis of malaria in the Northern Peruvian Amazon. *Am J Trop Med Hyg* 75: 1216–1222.
 24. Griffitt JT, Hollingsworth TD, Okell LC, Churcher TS, White M, et al. (2010) Reducing *Plasmodium falciparum* malaria transmission in Africa: a model-based evaluation of intervention strategies. *PLoS Med* 6: e1000324. doi:10.1371/journal.pmed.1000324.
 25. Moonen B, Cohen JM, Snow RW, Slutsker L, Drakeley C, et al. (2010) Operational strategies to achieve and maintain malaria elimination. *Lancet* 376: 1592–1603.
 26. Gaudart J, Poudiougou B, Dicko A, Ranque S, Toure O, et al. (2006) Space-time clustering of childhood malaria at the household level: a dynamic cohort in a Mali village. *BMC Public Health* 6: 286.
 27. Bejon P, Cook J, Bergmann-Leitner E, Olutu A, Lusingu J, et al. (2011) Effect of the pre-erythrocytic candidate malaria vaccine RTS,S/AS01E on blood stage immunity in young children. *J Infect Dis* 204: 9–18.
 28. Teuscher T (1992) Household-based malaria control in a highly endemic area of Africa (Tanzania): determinants of transmission and disease and indicators for monitoring—Kilombero Malaria Project. *Mem Inst Oswaldo Cruz* 87 Suppl 3: 121–130.
 29. Bousema T, Youssef RM, Cook J, Cox J, Alegana VA, et al. (2010) Serological markers for detecting malaria in areas of low endemicity, Somalia, 2008. *Emerg Infect Dis* 16: 392–399.
 30. Kilombero Malaria Project (1992) The level of anti-sporozoite antibodies in a highly endemic malaria area and its relationship with exposure to mosquitoes. *Kilombero Malaria Project. Trans R Soc Trop Med Hyg* 86: 499–504.
 31. Hay SI, Guerra CA, Gething PW, Patil AP, Tatem AJ, et al. (2009) A world malaria map: *Plasmodium falciparum* endemicity in 2007. *PLoS Med* 6: e1000048. doi:10.1371/journal.pmed.1000048.
 32. Reddy MR, Overgaard HJ, Abaga S, Reddy VP, Caccone A, et al. (2011) Outdoor host seeking behaviour of *Anopheles gambiae* mosquitoes following initiation of malaria vector control on Bioko Island, Equatorial Guinea. *Malar J* 10: 184.
 33. Clarke SE, Bogh C, Brown RC, Walraven GE, Thomas CJ, et al. (2002) Risk of malaria attacks in Gambian children is greater away from malaria vector breeding sites. *Trans R Soc Trop Med Hyg* 96: 499–506.
 34. Wilson S, Booth M, Jones FM, Mwatha JK, Kimani G, et al. (2007) Age-adjusted *Plasmodium falciparum* antibody levels in school-aged children are a stable marker of microgeographical variations in exposure to *Plasmodium* infection. *BMC Infect Dis* 7: 67.
 35. Stewart L, Gosling R, Griffin J, Gesase S, Campo J, et al. (2009) Rapid assessment of malaria transmission using age-specific seroconversion rates. *PLoS ONE* 4: e6083. doi:10.1371/journal.pone.0006083.
 36. Cook J, Kleinschmidt I, Schwabe C, Nseng G, Corran PH, et al. (2011) Serological markers identify heterogeneity of effectiveness of malaria control interventions on Bioko island, Equatorial Guinea. *PLoS ONE* 6: e25137. doi:10.1371/journal.pone.0025137.
 37. Pullan RL, Bikirwa H, Staedke SG, Snow RW, Brooker S (2010) *Plasmodium* infection and its risk factors in eastern Uganda. *Malar J* 9: 2.
 38. Pullan RL, Kabatereine NB, Bukirwa H, Staedke SG, Brooker S (2011) Heterogeneities and consequences of *Plasmodium* species and hookworm coinfection: a population based study in Uganda. *J Infect Dis* 203: 406–417.
 39. Coleman M, Coleman M, Mabuza AM, Kok G, Coetzee M, et al. (2009) Using the SaTScan method to detect local malaria clusters for guiding malaria control programmes. *Malar J* 8: 68.
 40. Nourcin AB, Abass MA, Nugud AH, El Hassan I, Snow RW, et al. (2011) Identifying residual foci of *Plasmodium falciparum* infections for malaria elimination: the urban context of Khartoum, Sudan. *PLoS ONE* 6: e16948. doi:10.1371/journal.pone.0016948.
 41. Lindsay SW, Armstrong Schellenberg JR, Zeiler HA, Daly RJ, Salum FM, et al. (1995) Exposure of Gambian children to *Anopheles gambiae* malaria vectors in an irrigated rice production area. *Med Vet Entomol* 9: 50–58.
 42. Trape JF, Lefebvre-Zante E, Legros F, Ndiaye G, Bouganali H, et al. (1992) Vector density gradients and the epidemiology of urban malaria in Dakar, Senegal. *Am J Trop Med Hyg* 47: 181–189.
 43. van den Bijllaardt W, ter Braak R, Shekalaghe S, Otieno S, Mahande A, et al. (2009) The suitability of clay pots for indoor sampling of mosquitoes in an arid area in northern Tanzania. *Acta Trop* 111: 197–199.
 44. Nabie Bayoh M, Akhwale W, Ombok M, Sang D, Engoki SC, et al. (2011) Malaria in Kakuma refugee camp, Turkana, Kenya: facilitation of *Anopheles arabiensis* vector populations by installed water distribution and catchment systems. *Malar J* 10: 149.
 45. Midega JT, Mbogo CM, Mwnambi H, Wilson MD, Ojwang G, et al. (2007) Estimating dispersal and survival of *Anopheles gambiae* and *Anopheles funestus* along the Kenyan coast by using mark-release-recapture methods. *J Med Entomol* 44: 923–929.
 46. McCall PJ, Mosha FW, Njunwa KJ, Sherlock K (2001) Evidence for memorized site-fidelity in *Anopheles arabiensis*. *Trans R Soc Trop Med Hyg* 95: 587–590.
 47. Charlwood JD, Graves PM, Marshall TF (1988) Evidence for a ‘memorized’ home range in *Anopheles farauti* females from Papua New Guinea. *Med Vet Entomol* 2: 101–108.
 48. Falk N, Maire N, Sama W, Owusu-Agyei S, Smith T, et al. (2006) Comparison of PCR-RFLP and GenScan-based genotyping for analyzing infection dynamics of *Plasmodium falciparum*. *Am J Trop Med Hyg* 74: 944–950.
 49. Russell TL, Govella NJ, Azizi S, Drakeley CJ, Kachur SP, et al. (2011) Increased proportions of outdoor feeding among residual malaria vector populations following increased use of insecticide-treated nets in rural Tanzania. *Malar J* 10: 80.
 50. Fillinger U, Kamnady K, William G, Vaneck MJ, Dongus S, et al. (2008) A tool box for operational mosquito larval control: preliminary results and early lessons from the Urban Malaria Control Programme in Dar es Salaam, Tanzania. *Malar J* 7: 20.
 51. Knols BG, Bukhari T, Farenhorst M (2010) Entomopathogenic fungi as the next-generation control agents against malaria mosquitoes. *Future Microbiol* 5: 339–341.
 52. Okumu FO, Madumla EP, John AN, Lwetojera DW, Sumaye RD (2010) Attracting, trapping and killing disease-transmitting mosquitoes using odor-baited stations - The Ifakara Odor-Baited Stations. *Parasit Vectors* 3: 12.
 53. Jawara M, Awolola TS, Pinder M, Jeffries D, Smallegange RC, et al. (2011) Field testing of different chemical combinations as odour baits for trapping wild mosquitoes in The Gambia. *PLoS ONE* 6: e19676. doi:10.1371/journal.pone.0019676.
 54. Stresman GH, Kamanga A, Moono P, Hamapumbu H, Mharakurwa S, et al. (2010) A method of active case detection to target reservoirs of asymptomatic malaria and gametocyte carriers in a rural area in Southern Province, Zambia. *Malar J* 9: 265.
 55. Okell LC, Ghani AC, Lyons E, Drakeley CJ (2009) Submicroscopic infection in *Plasmodium falciparum*-endemic populations: a systematic review and meta-analysis. *J Infect Dis* 200: 1509–1517.

56. Okell LC, Griffin J, Kleinschmidt I, Hollingsworth TD, Churcher T, et al. (2011) The potential contribution of mass treatment to the control of *Plasmodium falciparum* malaria. PLoS ONE 6: e20179. doi:10.1371/journal.pone.0020179.
57. Bousema T, Drakeley C (2011) Epidemiology and infectivity of *Plasmodium falciparum* and *Plasmodium vivax* gametocytes in relation to malaria control and elimination. Clin Microbiol Rev 24: 377–410.
58. MalERA Consultative Group on Vaccines (2011) A research agenda for malaria eradication: vaccines. PLoS Med 8: e1000398. doi:10.1371/journal.pmed.1000398.
59. Flaxman AD, Fullman N, Otten MW, Jr., Menon M, Cibulskis RE, et al. (2010) Rapid scaling up of insecticide-treated bed net coverage in Africa and its relationship with development assistance for health: a systematic synthesis of supply, distribution, and household survey data. PLoS Med 7: e1000328. doi:10.1371/journal.pmed.1000328.