





Pilot

**Quality Controlled Logistics
in Flowers & Plants Supply Chains**



Presentation Smart AgriMatics
13 June 2012, Paris

Robbert Robbemon (Presenter)
Nicole Koenderink (Pilot Coordinator)
Cor Verdouw (Work Package Leader)



Agenda

- General overview of the pilot
- Business case description
- Technical overview of the pilot
- Illustrative demo
- Conclusions

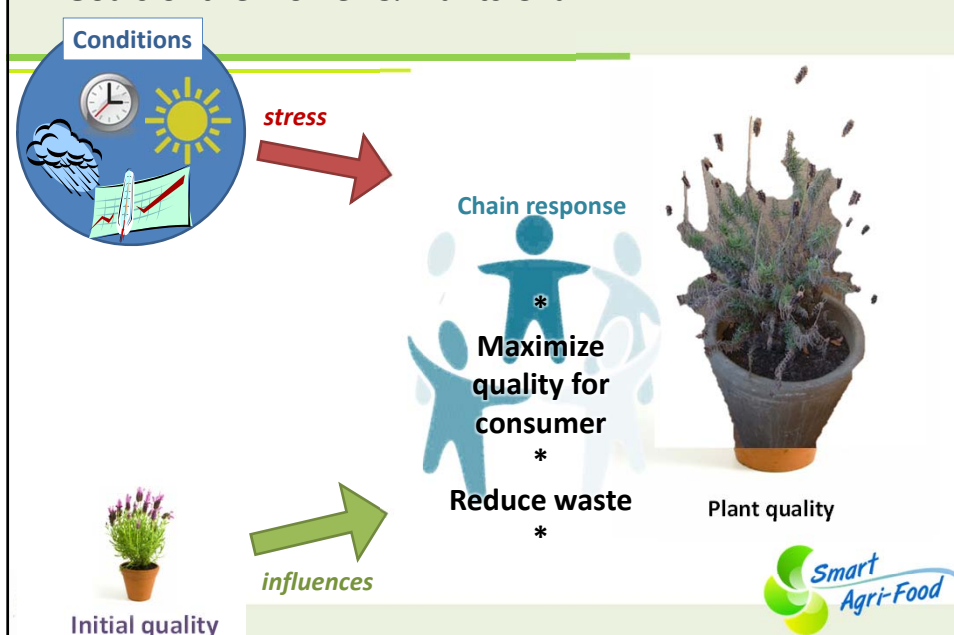




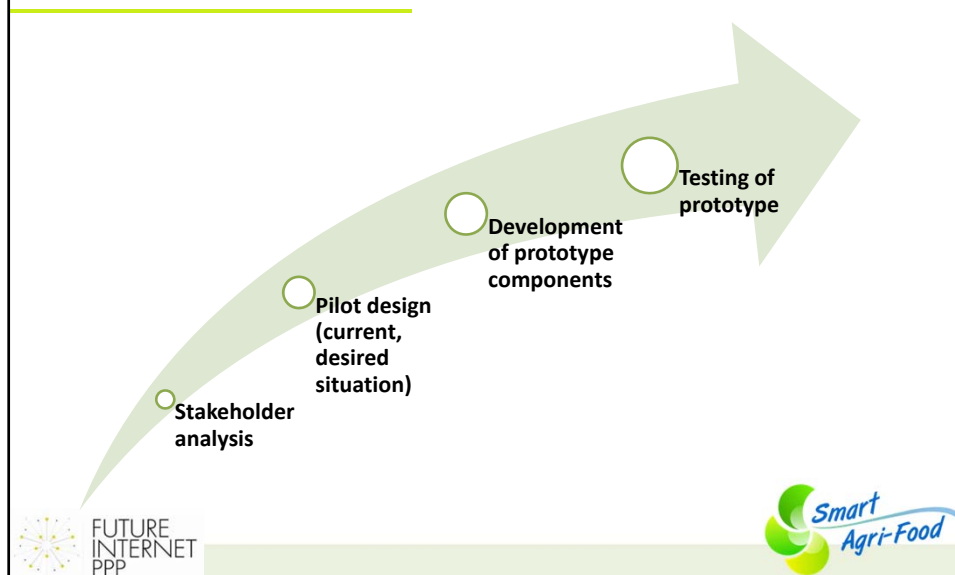
Context Flowers & Plants domain



Goals of the Flower & Plants Chain



Phases in Flower and Plants Pilot



Agenda

- General overview of the pilot
- Business case description
- Technical overview of the pilot
- Illustrative demo
- Conclusions



Project Partners



Chain Stakeholders

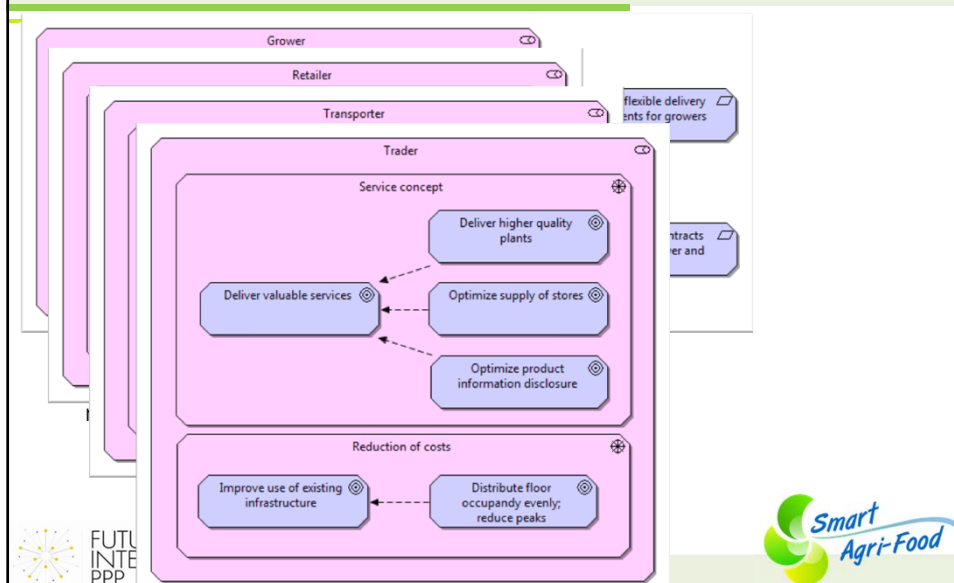




Prototype Experimentation Centre



Business Case Analysis – Important Benefits



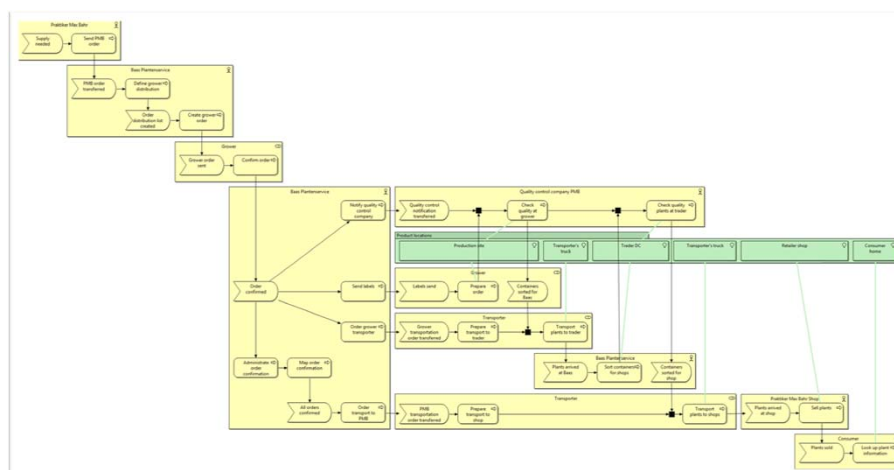


Agenda

- General overview of the pilot
- Business case description
- Technical overview of the pilot
- Illustrative demo
- Conclusions

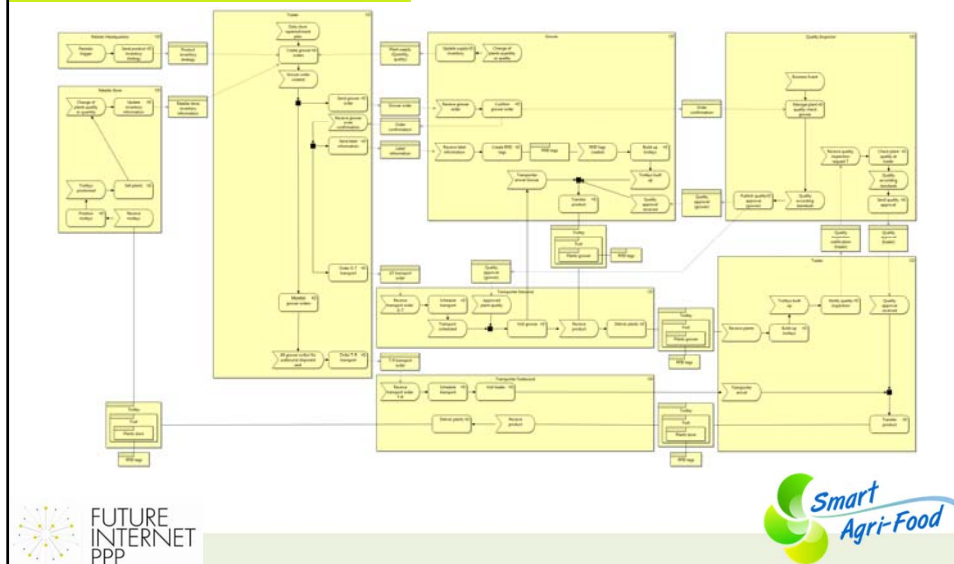


Current chain situation

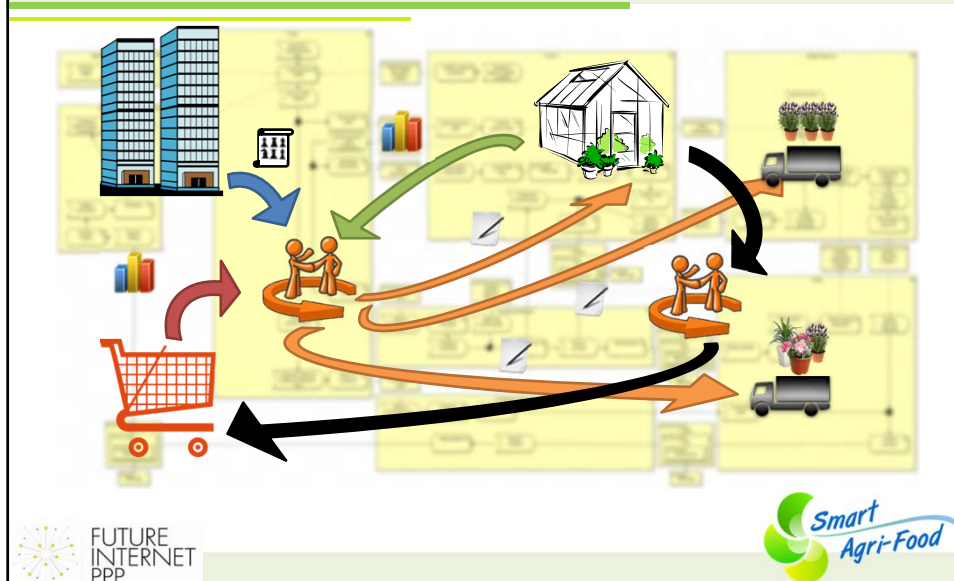


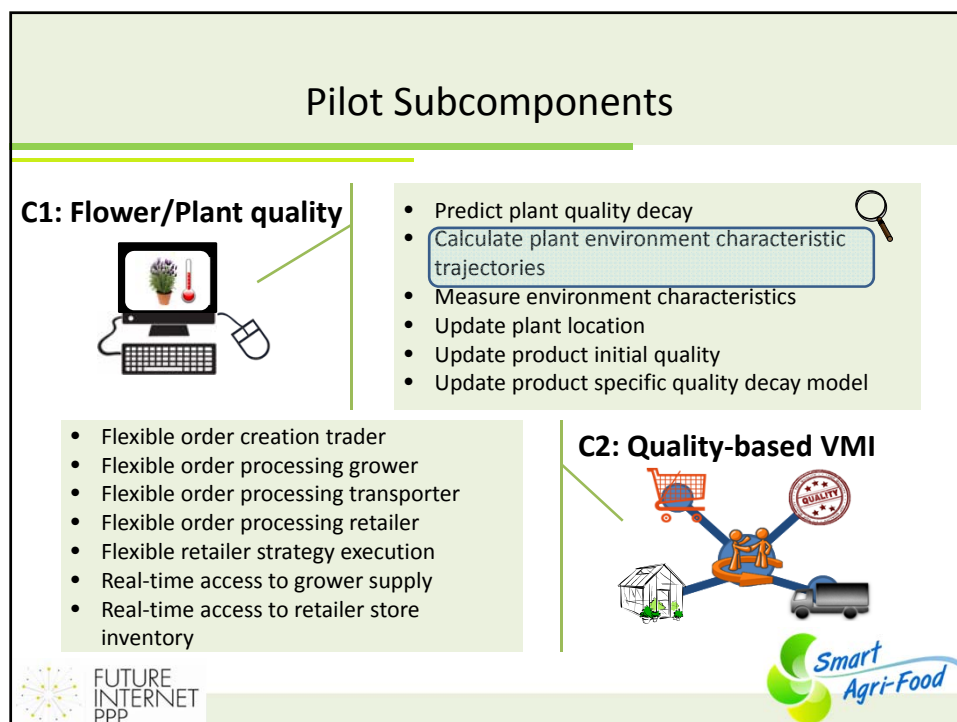
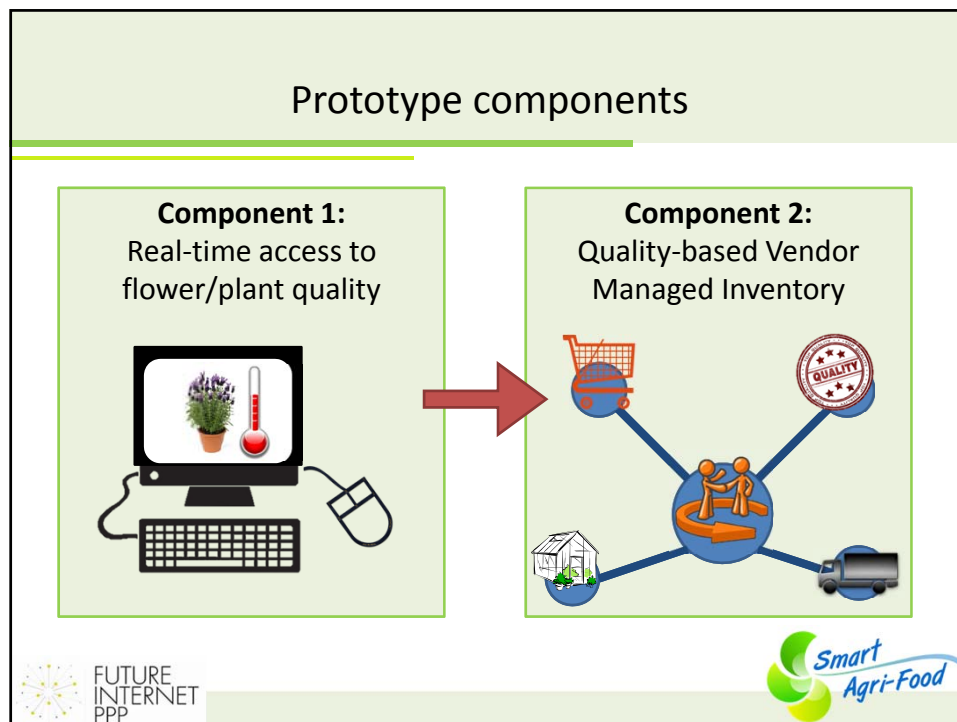


Desired chain situation

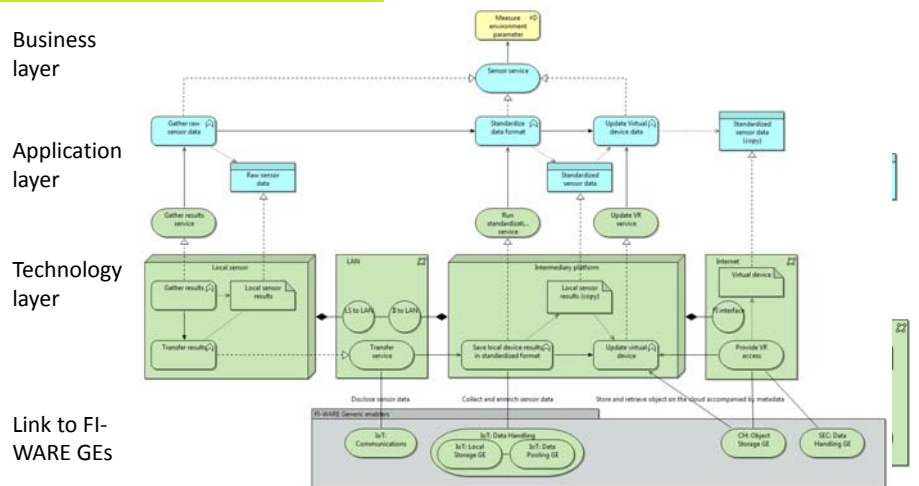


Desired chain situation explained



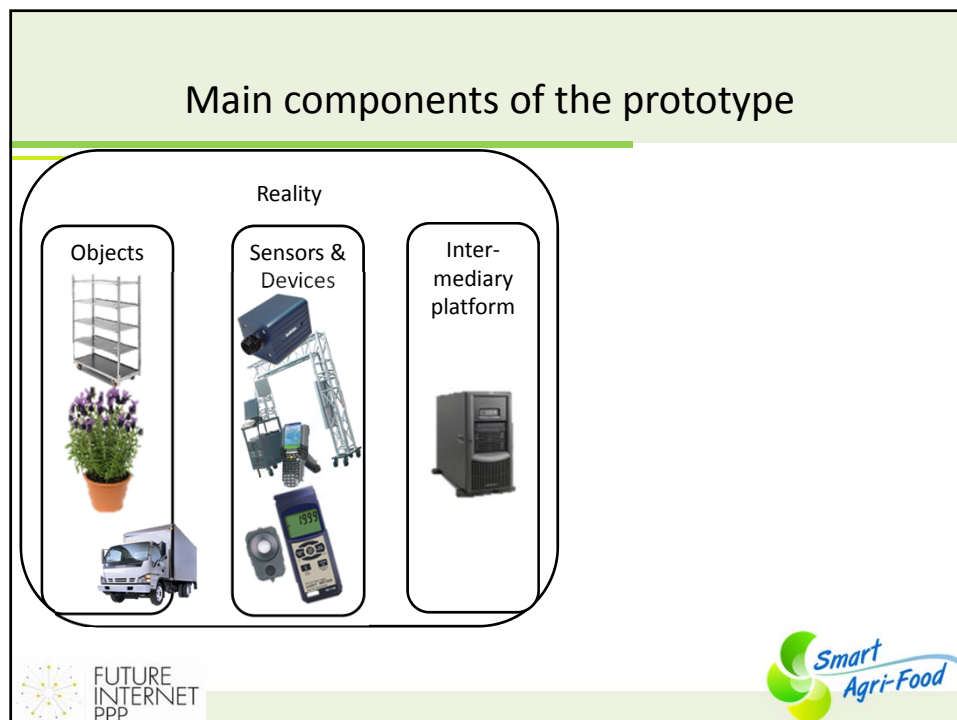
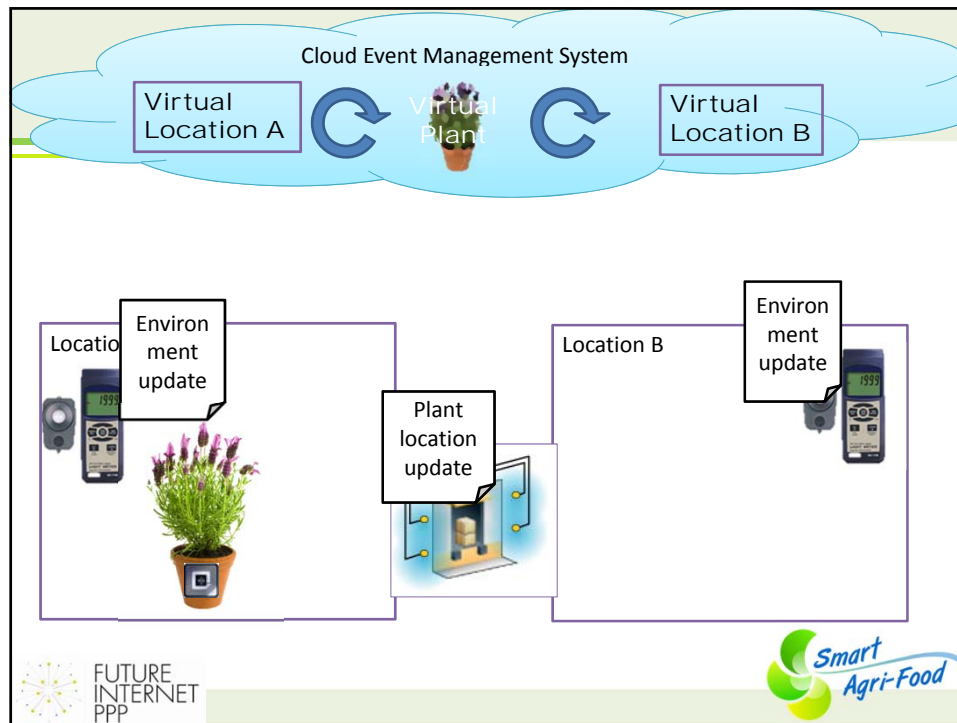


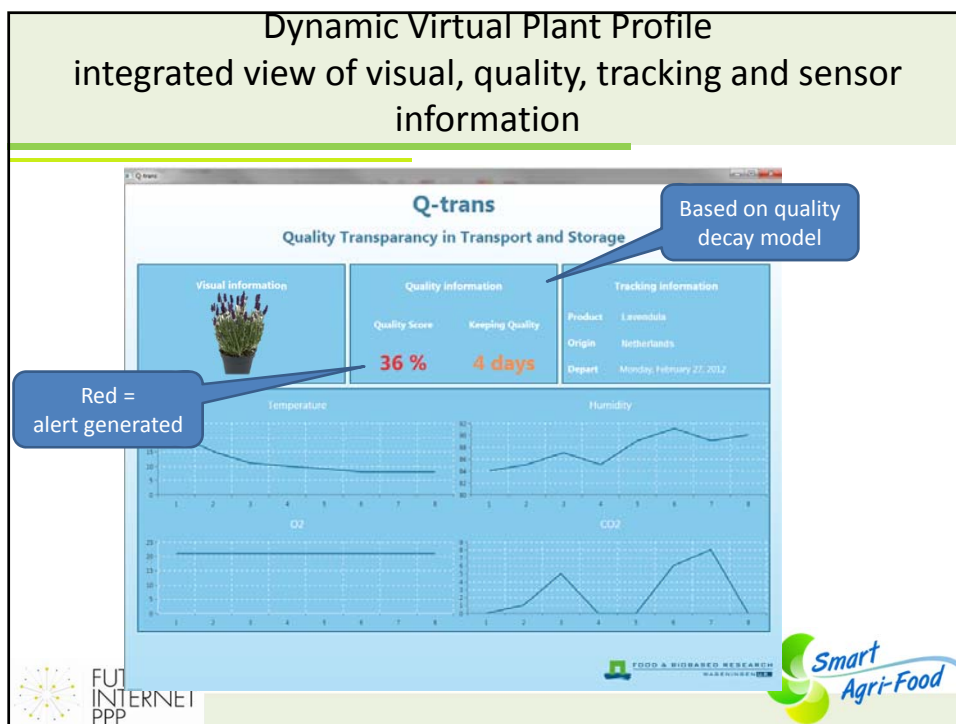
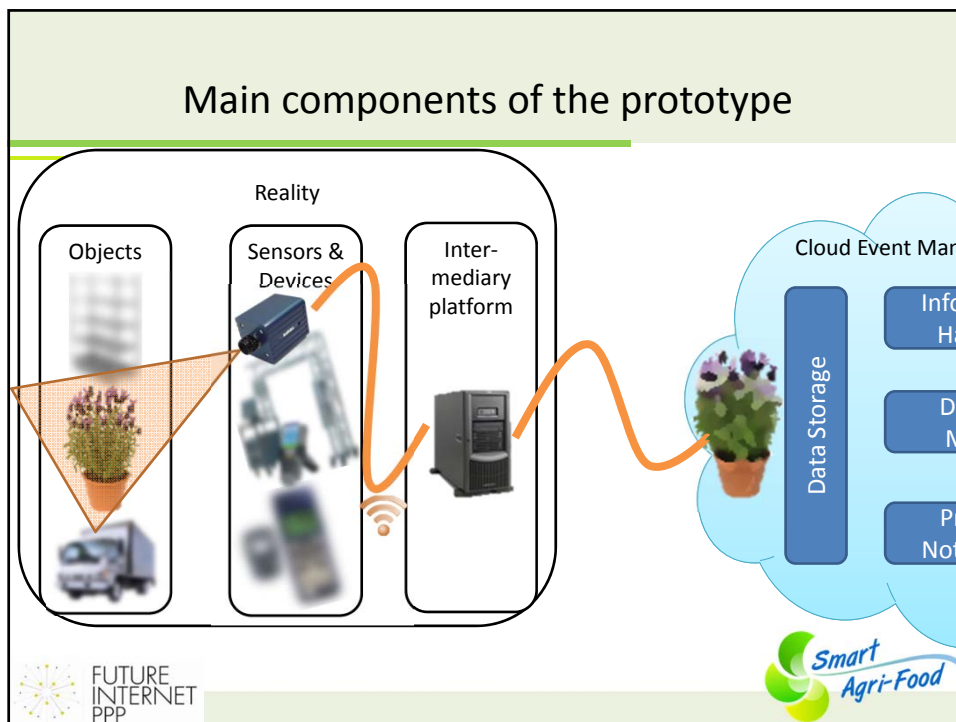
Example Subcomponent functional description



Agenda

- General overview of the pilot
- Business case description
- Technical overview of the pilot
- Illustrative demo
- Conclusions





Agenda

- General overview of the pilot
- Business case description
- Technical overview of the pilot
- Illustrative demo
- Conclusions



Conclusions 1/2



Challenging requirements for the future internet

- Dynamic updating of rich virtual plants profiles
- Combination of different types of sensor data
- Continuous (re)calculating of remaining shelf live based on diverse data
- Proactive monitoring and control (alert generation and management)
- Dynamic planning and (re)scheduling, balancing demand/supply



Conclusions 2/2

Major advantages of future internet for all parties involved

- ✓ – Grower: less energy in stressing plants to be ready “in time”
- ✓ – Trader: better capabilities to optimally match supply and demand
- ✓ – Transporter: smarter scheduling of orders and optimization of routes
- ✓ – Retailer: higher service level to customers (full shelves, higher quality products)

