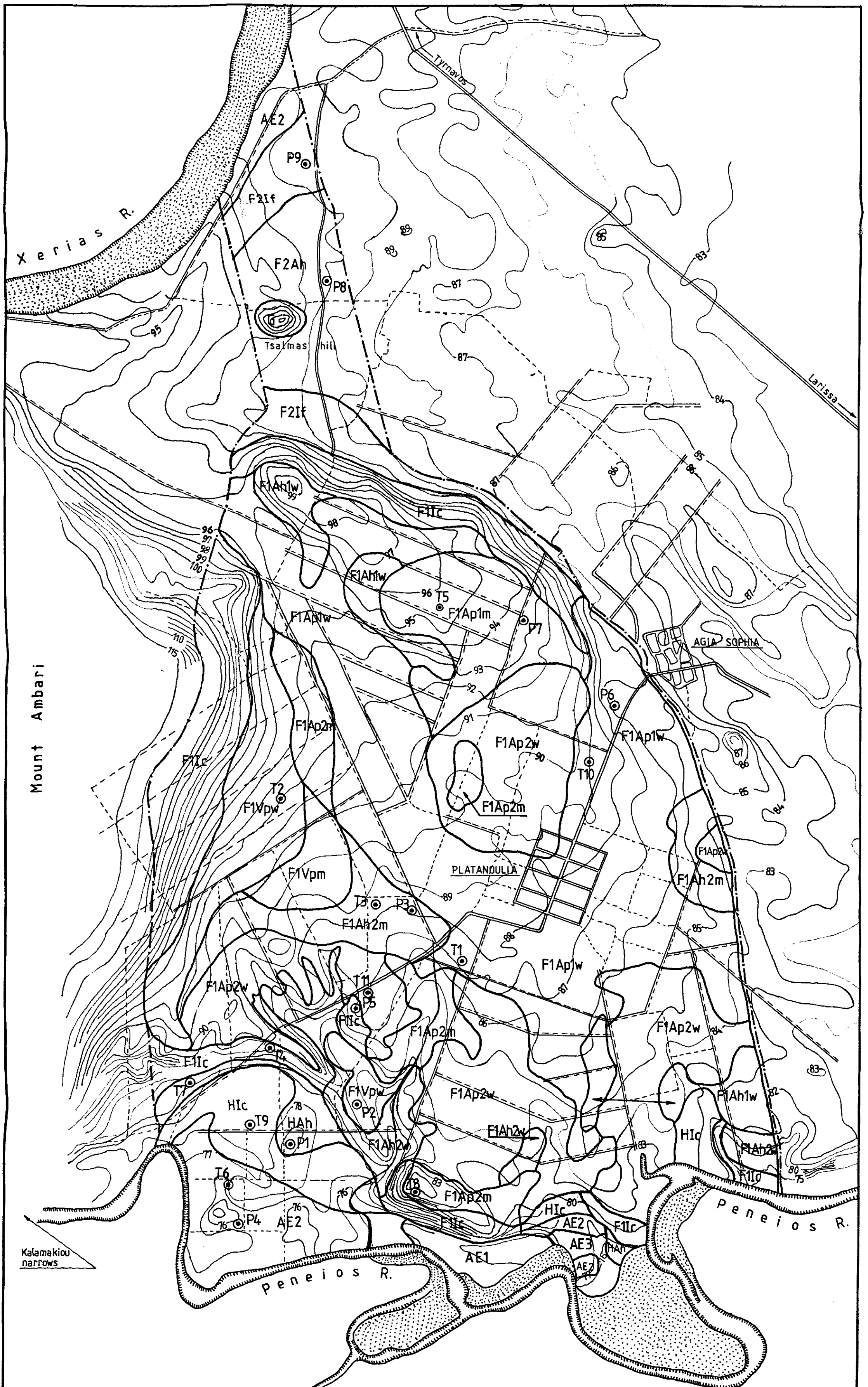


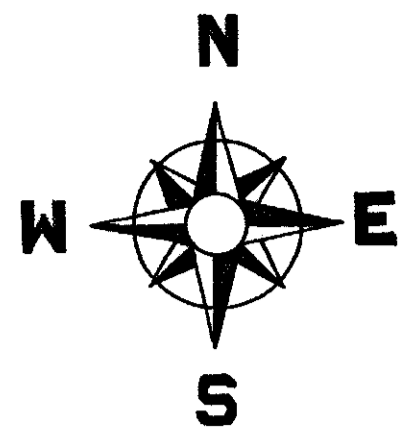
SOIL MAP OF PLATANOULIA

SCALE 1:20,000



Paved roads
 Unpaved roads
 all weather
 dry weather
 Stream
 Rivers
 Contour
 P1 Soil profile
 T3 Soil section (soil physical and/or chemical data supplied in this)

LEGEND



1. SOILS OF THE PLEISTOCENE TERRACE

a. higher level

F1Ap1w	DEEP, WELL DRAINED SOILS HAVING A LOAMY SURFACE OVER A THICK CLAYLOAMY Bt HORIZON
F1Ap1m	DEEP, MODERATELY WELL DRAINED SOILS HAVING A LOAMY SURFACE OVER A VERY THICK, CLAYLOAMY Bt HORIZON
F1Ap2w	DEEP, WELL DRAINED SOILS HAVING A LOAMY SURFACE OVER A THICK, CLAYEY Bt HORIZON
F1Ap2m	DEEP, MODERATELY WELL DRAINED SOILS HAVING A LOAMY SURFACE OVER A THICK, CLAYEY Bt HORIZON
F1Ah1w	MODERATELY DEEP, WELL DRAINED, CLAYLOAM SOILS HAVING AN ARGILLIC HORIZON
F1Ah2w	MODERATELY DEEP, WELL DRAINED, CLAY SOILS HAVING AN ARGILLIC HORIZON
F1Ah2m	MODERATELY DEEP, MODERATELY WELL DRAINED, CLAY SOILS HAVING AN ARGILLIC HORIZON
F1Vpw	DEEP, WELL TO MODERATELY WELL DRAINED, CRACKING CLAY SOILS HAVING AN ARGILLIC HORIZON
F1Vpm	DEEP, MODERATELY WELL TO IMPERFECTLY DRAINED, CRACKING CLAY SOILS HAVING AN ARGILLIC HORIZON
F1Ic	SHALLOW, WELL TO EXCESSIVELY DRAINED, FINE TEXTURED SOILS HAVING A SHALLOW CALCIC HORIZON

b. middle level

F2Ah	DEEP, WELL DRAINED, CLAYLOAM SOILS HAVING AN ARGILLIC HORIZON
F2If	DEEP, WELL DRAINED, MEDIUM TEXTURED SOILS HAVING A CAMBIC HORIZON

2. SOILS OF THE HOLOCENE TERRACES

HAh	DEEP, WELL DRAINED, CLAYLOAM SOILS HAVING AN ARGILLIC HORIZON
HIc	MODERATELY DEEP, WELL DRAINED, MODERATELY FINE TEXTURED SOILS HAVING A CALCIC HORIZON

3. SOILS OF THE FLOOD PLAIN

AE1	MODERATELY DEEP, EXCESSIVELY DRAINED, CALCAREOUS, COARSE TEXTURED SOILS
AE2	MODERATELY DEEP, WELL DRAINED, CALCAREOUS, MEDIUM TEXTURED SOILS
AE3	MODERATELY DEEP, WELL DRAINED, CALCAREOUS, MODERATELY FINE TEXTURED SOILS

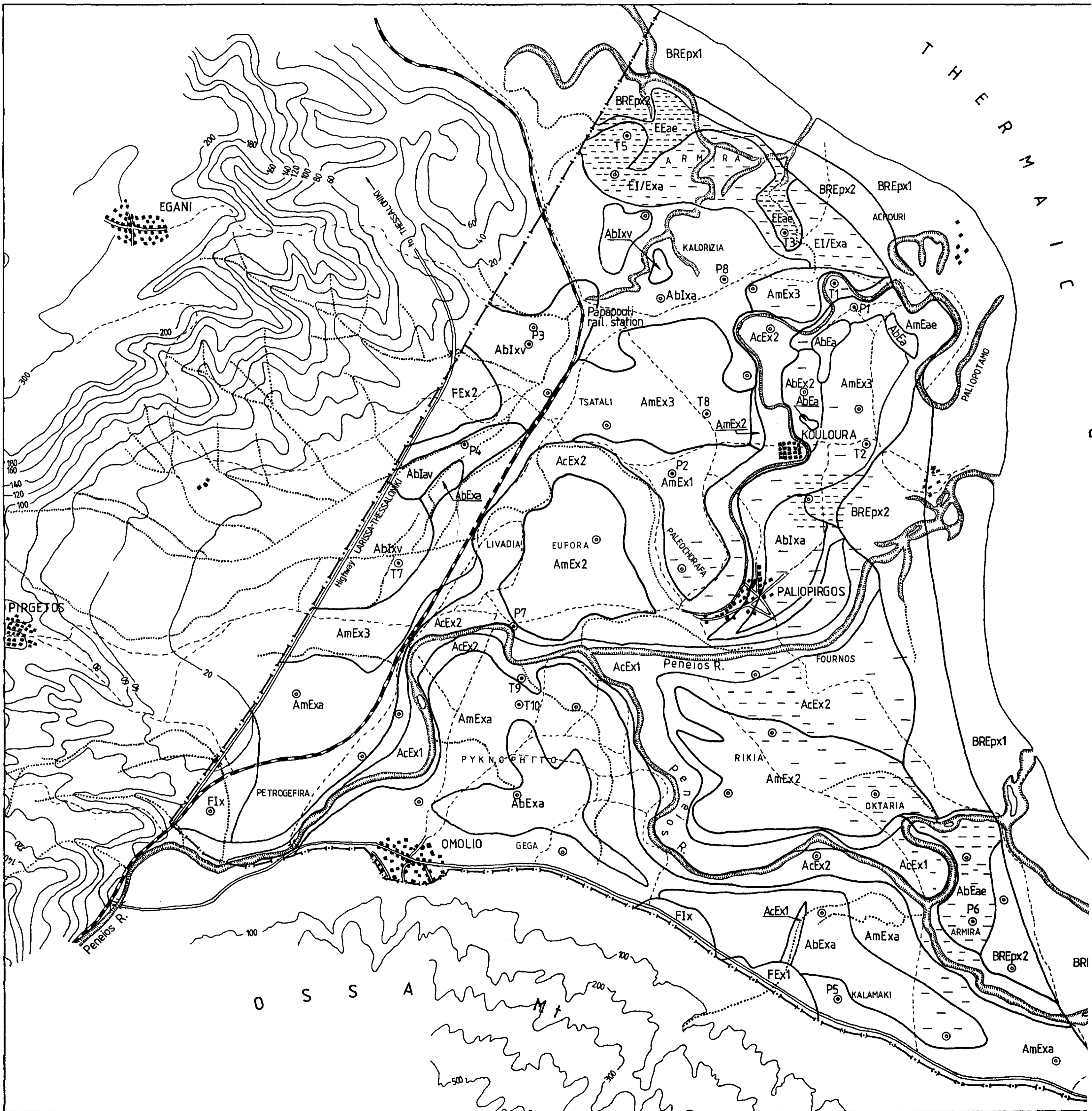
G Man made hills

----- Border of the study area

0 1.0 2.0 km

SOIL MAP OF PENEIOS DELTA AREA

SCALE 1:25,000



P1
 ● Soil profile

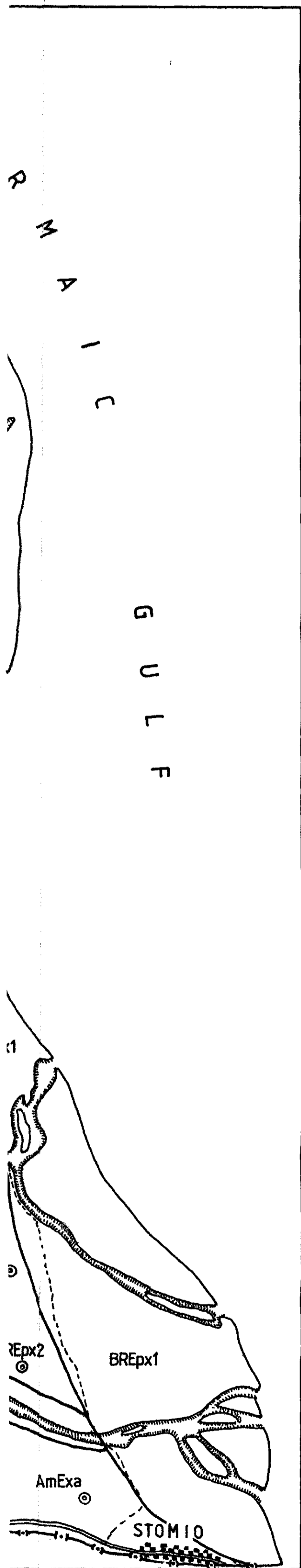
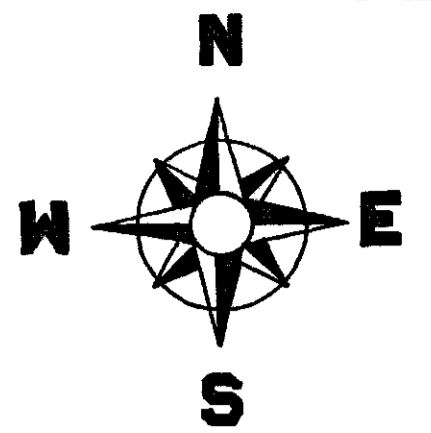
T3
 ● Soil section (chemical data available)
 ○ Soil section (data on CEC, ESP, ECe)

○ Contour
 120

Streams
 Rivers

— Paved roads
 - - - Unpaved roads

Urban



SOILS OF THE BEACH RIDGES

- BREpx1 VERY COARSE TEXTURED, EXCESSIVELY DRAINED SOILS
- BREpx2 COARSE TEXTURED, EXCESSIVELY DRAINED SOILS

SOILS OF THE CHANNEL BELT

(Nearly flat, very stratified, calcareous, alluvial soils with fluvic properties)

- AcEx1 SANDY LOAMY SOILS, SOMEWHAT EXCESSIVELY DRAINED
- AcEx2 MEDIUM OVER COARSE TEXTURED, WELL DRAINED SOILS

SOILS OF THE MEANDERING BELT

(Nearly flat, deep, stratified, calcareous, alluvial soils with fluvic properties)

- AmEx1 COARSE OVER MEDIUM TEXTURED, WELL DRAINED SOILS
- AmEx2 MEDIUM TO MODERATELY FINE OVER COARSE TEXTURED SOILS, WELL TO MODERATELY WELL DRAINED
- AmEx3 MODERATELY FINE TEXTURED SOILS, WELL TO MODERATELY WELL DRAINED
- AmExa COARSE TO MEDIUM TEXTURED SOILS, MODERATELY WELL DRAINED
- AmEae MEDIUM TEXTURED, POORLY DRAINED SOILS

SOILS OF THE BACKSWAMPS

(Very young to slightly developed, flat, medium to fine textured soils with seasonally high groundwater table)

- AbIav SLIGHTLY DEVELOPED, CRACKING CLAY SOILS, VERY POORLY DRAINED
- AbI xv SLIGHTLY DEVELOPED, CRACKING CLAY SOILS, IMPERFECTLY TO POORLY DRAINED
- AbI xa SLIGHTLY DEVELOPED, MODERATELY FINE TEXTURED SOILS, IMPERFECTLY DRAINED
- AbExa STRATIFIED, MEDIUM TEXTURED SOILS, IMPERFECTLY DRAINED
- AbEae STRATIFIED, MEDIUM OVER MODERATELY FINE TEXTURED SOILS, POORLY DRAINED
- AbEa FINE TEXTURED SOILS, VERY POORLY DRAINED (WETLANDS)

SOILS OF THE ALLUVIAL FANS

(Gently undulating, very young to slightly developed soils with very deep groundwater table)

- FEx1 GRAVELLY, COARSE TO MEDIUM TEXTURED SOILS, EXCESSIVELY DRAINED
- FEx2 VERY GRAVELLY, LOAMY SOILS, EXCESSIVELY DRAINED
- FIx SLIGHTLY DEVELOPED, MODERATELY FINE TEXTURED SOILS, WELL DRAINED

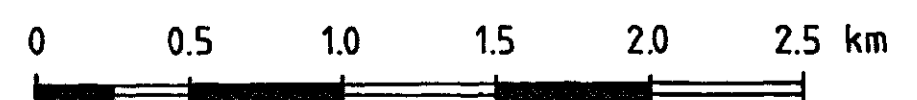
SOILS OF THE ESTUARINE PLAINS

(Flat, very young to slightly developed soils with seasonally high groundwater table. The soils have commonly high E.S.P. and occasionally high ECe values)

- EEae STRATIFIED, MEDIUM TO FINE OVER COARSE TEXTURED SOILS, POORLY DRAINED
- EI/Exa ASSOCIATION OF VERY YOUNG (E) AND SLIGHTLY DEVELOPED (I), MODERATELY FINE TEXTURED SOILS, POORLY DRAINED

 Soil phase: sodicity (and in places salinity)

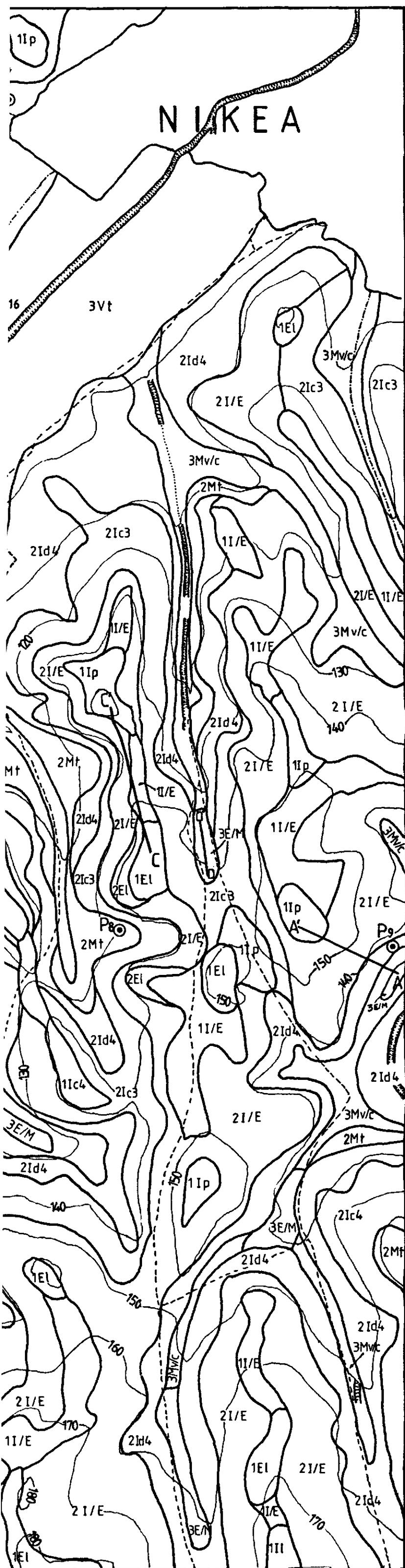
Railway



Urban areas

Border of study area

LEGEND



1. SOILS OF THE TOPS

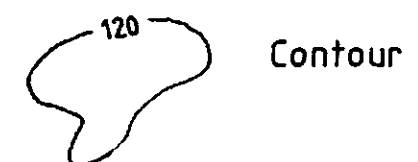


1E1	VERY SHALLOW, VERY GRAVELLY, LOAMY SOILS
1Ip	(SANDY) CLAYLOAM SOILS, HAVING A SHALLOW PETROCALCIC HORIZON
1Ic3	GRAVELLY, SANDY (CLAY)LOAM SOILS, HAVING A SHALLOW CALCIC HORIZON
1Ic4	CLAY SOILS, HAVING A SHALLOW CALCIC HORIZON
1I/E	ASSOCIATION OF GRAVELLY SANDY (CLAY)LOAM SOILS, HAVING A SHALLOW CALCIC HORIZON, AND VERY SHALLOW, VERY GRAVELLY SOILS

2. SOILS OF THE SLOPES

2E1	VERY SHALLOW, EXTREMELY GRAVELLY SOILS
2Ic3	VERY SHALLOW, GRAVELLY, SANDY (CLAY)LOAM SOILS, HAVING A CALCIC HORIZON WITHIN 40 cm FROM THE SURFACE
2Ic4	VERY SHALLOW, CLAY SOILS, HAVING A CALCIC HORIZON WITHIN 40 cm FROM THE SURFACE
2I/E	ASSOCIATION OF GRAVELLY SOILS HAVING A SHALLOW CALCIC HORIZON, AND VERY SHALLOW, VERY GRAVELLY SOILS
2Id3	SOMEWHAT GRAVELLY, MODERATELY DEEP AND FINE TEXTURED SOILS
2Id4	MODERATELY DEEP, FINE TEXTURED SOILS
2Iv	MODERATELY DEEP, CLAY SOILS HAVING VERTIC PROPERTIES
2Mt	MODERATELY DEEP, DARK, CLAY SOILS
2fIp	SHALLOW, FINE TEXTURED SOILS, HAVING A PETROCALCIC HORIZON
2fI/E	ASSOCIATION OF CLAY SOILS HAVING A CALCIC HORIZON, AND SHALLOW, VERY GRAVELLY, CLAYLOAMY SOILS

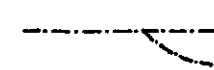
⊙ P ₂	Soil profile
⊙ T ₁₂	Soil section (only chemical data available)



Contour



Streams



Paved roads



Unpaved roads

3. SOILS OF THE VALLEY BOTTOMS

3Vt	STRONGLY SWELLING CLAY SOILS
3Mv	MODERATELY DEEP, DARK, CLAY SOILS, HAVING VERTIC PROPERTIES
3Iv	CRACKING CLAY SOILS
3Mv/c	DEEP, DARK, CRACKING CLAY SOILS
3E/M	ASSOCIATION OF DARK, VERY SHALLOW AND GRAVELLY SOILS AND DARK, DEEPER, GRAVELLY, CLAY SOILS

