



DE-SU OMAN GOLI  
(O MAN X BW MARSHALL)

Production proof: 116 daughters in 95 herds  
(source GES April 2011)

Kg M	% fat	% prot.	Kg fat	Kg prot.	PIN	PLI
+514	+0.05	+0.02	+24.5	+18.6	£39	£181

Longevity: +441 days

SCC: -18

Calving ease: 108

Temperament: 95

Milking speed: 102

Fertility: 100

Conformation traits: 80 daughters in 67 herds

	88	100	112
frame	106		
dairy strength	108		
udder	108		
feet and legs	103		
total score	109		

stature	105		
chest width	108		
body depth	108		
angularity	104		
condition score	106		
rump angle	98		
rump width	106		
rear legs rear view	103		
rear legs side view	97		
foot angle	105		
locomotion	101		
fore udder attachment	103		
front teat placement	109		
teat length	94		
udder depth	104		
rear udder height	107		
central ligament	104		
rear teat placement	104		

### Complete package

Goli is the complete package, a high production bull with low somatic cell scores and is very easy calving.

His daughters have exceptional longevity and are strong cows with great dairy strength and well above average body condition score.

Goli sires daughters with shallow udders with high rear udders and a strong ligament. Teat placement and fore udder attachment are also good. You can use Goli on almost every cow.

Goli is available from Avoncroft by calling Freephone 0800 7831880

Golden girls consistently rise to the top at De-Su

# Genetic gold mine

The Gold family at De-Su is an exceptional cow family and has produced some fantastic bulls, including Goli. Read on to find out more about one of the first Dutch tested sons of O Man.

text **Marieke de Weerd**

If it is critical for a modern cow family to prove itself in a commercial dairy setting, then the Gold family at De-Su is clearly successful with the high ranking proven bull Goli.

De-Su Oman Goli was among the first Dutch tested sons of O Man, combining a high milk yield with good components, and Goli's full sister confirms the transmitting abilities of the cow family. Just like Impuls, Fiction and Cricket, some of the other O Man sons at CRV in the Netherlands, Goli appeals when you are looking for high milk yields with good components and sound type.

### Consistent producers

Goli descends from an American cow family based at the commercial herd, De-Su Holsteins, which belongs to the Meyer family and is based in Iowa, in the US. "For four or five generations now, this family has consistently produced our top cows – quite an achievement in a milking herd of 1,200 cows," says Darin Meyer. "They are really good commercial animals, just average size as two year olds, but they keep growing till they are four or five year olds.

"They are very mobile with good fertility and they age well. And udder texture and teat placement are very good. But overall it's just a very consistent family."

Interestingly the Gold family arrived at De-Su in the 90s in the shape of Kerndtway Lead Gretchen, a Leadman sister to Kerndtway Goldfinger. Full sister to Goli is De-Su Oman 6121 VG86, who has become a revelation in the breeding industry during the past year as, at the same time that her progeny proven sons arrived, her younger sons shot to the top of the genomic lists.

Oman 6121 yielded 13,540kg of milk with 4.3% fat and 3.2% protein in her first 305-day lactation. The full siblings

De-Su Oman 6121 and Goli both are progeny of De-Su BW Marshall Georgia (sired by BW Marshall).

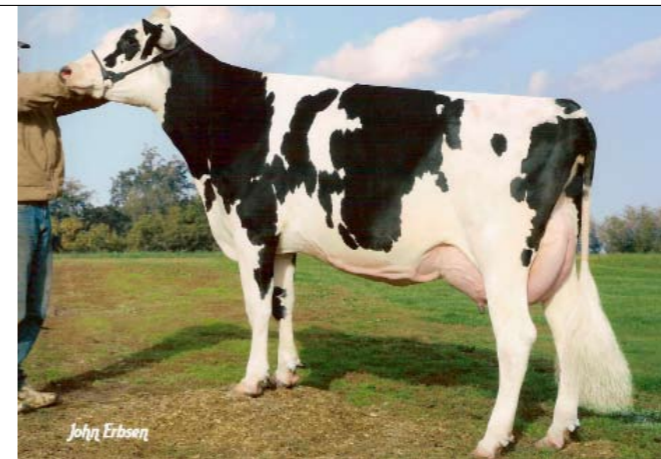
Georgia scored VG88 at the age of six and she completed two enormous lactation records. Her first lactation amounted to an impressive 14,102kg of milk with 4.2% fat and 3.4% protein. Georgia is out of the very well-known De-Su Patron Gold EX90. In her second lactation, she was classified excellent.

At the age of nine, she was again rewarded with EX90. Patron Gold achieved a lifetime production of 93,145kg of milk with 4.0% fat and 3.3% protein. When we look further into Goli's pedigree, we find Patron Gold's dam Kerndtway Lead Gretchen VG87 (s. Leadman), who produced more than 60,623kg of milk. By means of Secret daughter Kerndtway Goldust VG86 (lifetime yield of more than 42,000kg of milk), we finish up at Miss Milk-Key Gold Mine EX91.

Gold Mine's sire was Marshfield Elevation Tony. Like Patron Gold, Gold Mine was also capable of producing a lot of milk during her lifetime. She achieved a lifetime total of 94,823kg of milk with 4.0% fat and 3.2% protein in six lactations.

### Breeding pattern

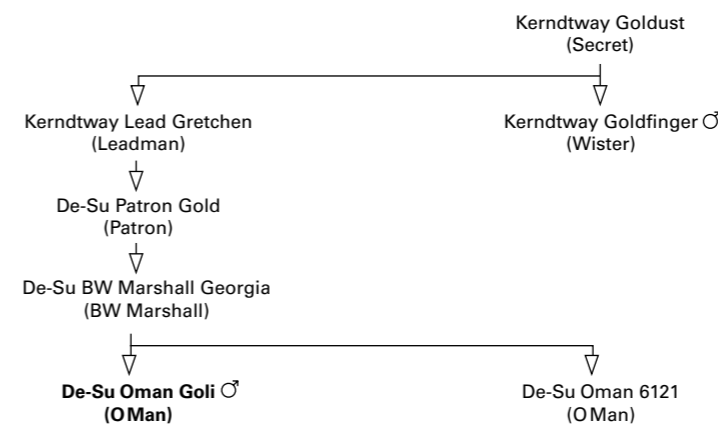
All the production traits of Goli are high: high milk yield with high and positive components, resulting in a lot of kilogrammes of fat and protein. The sires in his pedigree are all high milk yield transmitters and low for milk contents, except for OMan. Goli's production proof, therefore, bears a strong similarity to his sire OMan. Goli is very easy calving so is therefore an excellent choice for use on maiden heifers and his somatic cell scores are low. For daughter fertility and longevity he is in between OMan and BW Marshall.



De-Su Oman 6121 VG86-2yr is Goli's full sister



Goli daughter An 73, maternal grandsire Grandprix



This means that Goli daughters have exceptional longevity and average fertility. Goli sires tall, strong cows with a lot of chest width and body depth. With great dairy strength and well above average body condition score, Goli daughters show a lot of similarities to OMan daughters with a difference in

rumps – Goli transmits average rump angle, but with a lot of width. Here, we can see the influence of BW Marshall. A big difference with OMan is Goli's great udder transmittance. Goli sires shallow udders with high rear udders and a strong suspensory ligament. Teat placement and fore udder attachment

De-Su BW Georgia VG88, dam of Goli



are well covered as well. Here again, we see the influence of his grand sire BW Marshall. His great grand sire Patron also delivered excellent udders, which makes the mating of Goli's cow family with OMan a perfect compensation mating for udders.

You can use Goli on almost every cow. Suitable matings are, for example, matings with daughters of Goldwyn, Shottle, Canvas, Paramount, Switch, Onedin and Grandprix.

### Goli daughters

Ardy van den Ham is milking two Goli daughters from the test period. And they do really well. Akke 94 VG85 is projected to complete a first 305-day lactation of 8,882kg with 4.31% fat and 3.47% protein after 276 days, while Joke 28 GP83 is projected to complete a first-lactation of 8,873kg with 4.54% and 3.50%. This results in a lactation value of 124 for Akke and 125 for Joke.

"I am definitely going to use Goli again. My two Goli daughters perform really well with respect to production and type. I expect them to live for a long time," Ardy says.

Joke 29 is out of a GP+78 Grandprix dam. With her own score of GP83, Joke 29 scores a lot higher. Major improvements made are for frame and dairy strength.

Akke 94 VG85 is also classified a lot better than her GP80 dam by Celsius son Amarillo. Akke 92 is now in her fourth lactation and is an average production cow with a VG85 udder. As a heifer, she was somewhat narrow in the front and lacked body depth. Her Goli daughter has, for a heifer, the desired width to the front and back with average body depth. And she has an even better udder (VG87). "The Amarillo dam has a low milking speed and bad temperament, but her Goli daughter has a much improved milking speed even above average, I have to say," adds Ardy. |