

O Man's sons occupy top spot in the latest bull proof rankings

Heirs take the throne

Devon-based dairy producer, renown cattle breeder and three-times NMR/RABDF Gold Cup finalist Willy Ley shares his first impressions on the movers and shakers in this latest proof run.

text **Rachael Porter**

December's proof run finally saw Holstein bull OMan knocked off the number-one spot, but far from representing big movement at the top, the absence of the legendary sire reflects nothing more than the removal of this bull from the list as his semen is no longer available for sale.

The final few straws were auctioned off for charity at September's Dairy Event. This has cleared the way for his sons and successors to rise to the challenge he has set. And rise his sons most certainly have, completely monopolising the PLI ranking and now holding an unprecedented 10 of the top 10 positions.

As yet, none has quite reached the heights O Man achieved on PLI, but level-pegging in the vacated number-one position are Man-O-Man (full name, Long-Langs Oman Oman) and Co-op Oman Logan, who each weigh in with a PLI of £225.

These two US-bred bulls were previously ranked second and third respectively, with the former specialising in protein transmission with solid fitness and type traits, while the latter transmits a higher volume of milk.

The 848kg milk in Logan's Predicted Transmitting Ability (PTA) is not only one of the highest available in the breed, but is combined with remarkably good cell count figures at -21 as well as an impressive score of +0.4 for Lifespan.



Willy Ley

A completely different breeding pattern for the third-ranked Timmer Tyson shows just how a genetic index for selection such as PLI can recognise a range of breeding types. This Dutch-bred bull transmits only 155kg milk, but extreme constituents and good fitness traits see him promoted by his company as a bull for grazing systems.

There are certainly plenty of OMan sons to choose from," says Devon-based breeder Willy Ley, who says that his first impression of this proof run was that quite a few bulls have improved. Most notable for him are Gran-J Oman McCormick and Mainstream Manifold. In fact, McCormick is best for fitness overall from among the top 10, with an impressive -20 SCC, +0.4 Lifespan and +4.8 for Fertility Index. He moves up into sixth position.

Mainstream Manifold is a new entrant at

eighth in the rankings. He transmits a high weight of fat and, as one of only 10 bulls with more than three points for direct calving ease, he's one of the easiest calving sires on the market today.

"I've calves on the ground by both sires. I thought I'd dip my toe in to see for myself what they could do, and so far they're looking good." He adds that McCormick is positive in virtually every trait, but he's not so popular in the US as he's seen as a low milk bull over there. "But I'm pleased with my calves and I've been impressed by his other daughters I've seen too."

Strong debut

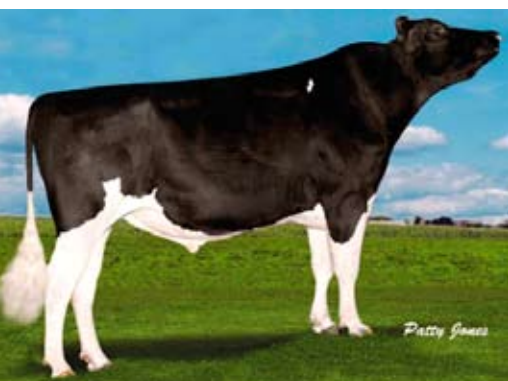
Willy also has his eye on two UK bulls in the top 100, one of which is the highest new entrant to the December proofs – the UK proven Relough Reformer. He makes a strong debut at number 25, despite limited daughter information. "He's not bad at all on figures and I'm looking into getting hold of a few straws."

With an impressive 34.8kg fat, he becomes the highest weight of fat transmitter, earns a PLI of £173, and becomes the highest ranking Shottle son. Reformer descends from an EX91 Wade dam from the famous Roxy family.

The second highest Shottle son and also UK-bred is Cogent Twist, who made his debut at the August 2010 proof run and improves his PLI to £166 with new daughter information. "I have cows in calf to him and I've seen daughters on the ground, which are looking good."

Looking ahead to the next proof run, Willy is eager to see how Genus bull Galastar Bluesky performs. "We could see him in the top 100 next time – his figures certainly seem to be stacking up. So we'll have to wait and see." |

Gran-J Oman McCormick



Long-Langs Oman Oman



Timmer Tyson



| name | sire | mat. grandsire | supplier | production | | | | | | | | functional traits | | | | | conformation | | |
|-------------------------------|---------|----------------|-----------------|------------|-------|--------|----------|-------|----------|------|------|-------------------|----------|----------------|------|-------|--------------|-------|--|
| | | | | rel. | milk | fat kg | prot. kg | fat% | protein% | EPIN | EPLI | SCC | lifespan | fertility ind. | dCE | F&L | udder | TM | |
| top 57 available bulls | | | | | | | | | | | | | | | | | | | |
| Lynbrook Jancen | O Man | Manat | Bullsemen.com | 74 | +424 | +29.1 | +23.4 | +0.15 | +0.12 | 52 | 241 | -11 | 0.5 | 1.7 | — | 0.62 | -0.01 | 0.26 | |
| Long-Langs O Man-O-Man | O Man | Aaron | WWS UK | 73 | +675 | +28.4 | +29.3 | +0.02 | +0.09 | 55 | 225 | -5 | 0.2 | -0.1 | 2.0 | 1.02 | 1.42 | 1.55 | |
| Co-Op Oman Logan | O Man | BW Marshall | Bullsemen.com | 72 | +848 | +31.6 | +26.7 | -0.02 | -0.01 | 48 | 225 | -21 | 0.4 | 0.0 | 2.4 | 1.29 | 0.28 | 0.71 | |
| Timmer Tyson | O Man | Novalis | Avoncroft | 78 | +155 | +32.0 | +17.5 | +0.32 | +0.16 | 51 | 224 | -16 | 0.3 | 3.0 | 3.4 | 0.91 | -1.03 | -0.48 | |
| Co-Op Oman Loydie | O Man | BW Marshall | Bullsemen.com | 71 | +472 | +26.0 | +23.2 | +0.09 | +0.10 | 48 | 218 | -13 | 0.3 | 2.4 | 2.8 | 0.99 | 0.46 | 0.75 | |
| Crockett-Acres Eight | O Man | Mtoto | Semex | 74 | +534 | +22.8 | +23.1 | +0.02 | +0.07 | 43 | 216 | -24 | 0.4 | 2.9 | 2.5 | 0.51 | 0.18 | 0.33 | |
| Gran-J Oman McCormick | O Man | Durham | Genus | 73 | +279 | +26.9 | +14.2 | +0.20 | +0.06 | 38 | 212 | -20 | 0.4 | 4.8 | 2.3 | 1.11 | 1.19 | 1.40 | |
| Ufm-Dubs Alta Esquire | O Man | Mark Sam | Alta | 72 | +460 | +32.2 | +21.4 | +0.17 | +0.08 | 50 | 212 | -8 | 0.2 | 2.4 | 2.0 | 1.18 | 0.24 | 0.58 | |
| Mainstream Manifold | O Man | BW Marshall | Semex | 74 | +784 | +31.3 | +24.2 | +0.00 | -0.01 | 45 | 210 | -6 | 0.3 | 3.7 | 3.1 | 0.34 | 1.08 | 0.94 | |
| Morningview Legend | O Man | Durham | Genus | 73 | +503 | +23.9 | +24.1 | +0.05 | +0.09 | 47 | 208 | -8 | 0.3 | 2.4 | 1.6 | 0.90 | 0.14 | 0.46 | |
| Coldsprings Garner | O Man | Patron | Bullsemen.com | 74 | +505 | +27.0 | +18.2 | +0.08 | +0.02 | 39 | 206 | -22 | 0.3 | 5.8 | 1.5 | 0.57 | 0.85 | 0.90 | |
| End-Road O-Man Bronco | O Man | BW Marshall | Dairy Daughters | 71 | +812 | +24.3 | +25.1 | -0.09 | -0.01 | 40 | 205 | -1 | 0.4 | 5.2 | 2.7 | 0.18 | 1.28 | 1.10 | |
| Regancrest Alta Iota | O Man | Ito | Alta | 72 | +516 | +27.7 | +20.3 | +0.09 | +0.04 | 43 | 201 | -11 | 0.2 | 3.2 | 2.1 | 0.79 | 1.81 | 1.66 | |
| Ufm-Dubs Ellrod | O Man | Lynch | Genus | 73 | +337 | +28.4 | +18.1 | +0.19 | +0.09 | 45 | 193 | -7 | 0.3 | 0.6 | 2.0 | 0.27 | 0.44 | 0.43 | |
| Woudhoeve 1042 Impuls | O Man | Jesther | Avoncroft | 78 | +589 | +25.8 | +25.1 | +0.03 | +0.07 | 48 | 192 | -12 | 0.3 | -3.4 | 0.5 | 0.46 | 0.14 | 0.30 | |
| Crockett-Acres Otto | O Man | Mtoto | Alta | 73 | +818 | +29.1 | +27.0 | -0.04 | +0.01 | 47 | 191 | -27 | 0.1 | -1.1 | 1.9 | -0.19 | 0.48 | 0.27 | |
| Schillview Oman Gerard | O Man | BW Marshall | Genus | 73 | +739 | +20.3 | +25.8 | -0.10 | +0.02 | 40 | 190 | 3 | 0.4 | -1.4 | 1.5 | 0.91 | 2.52 | 2.33 | |
| O-Man End-Story | O Man | Jocko | WWS UK | 68 | +626 | +27.3 | +22.6 | +0.03 | +0.03 | 44 | 185 | 5 | 0.1 | — | 3.5 | 1.76 | 2.13 | 2.32 | |
| Annex | O Man | Mtoto | Bullsemen.com | 70 | +505 | +22.9 | +17.6 | +0.04 | +0.01 | 35 | 185 | -29 | 0.2 | 5.0 | 1.8 | 1.60 | 0.35 | 0.92 | |
| Wizzard | Webster | Cash | Alta | 82 | +458 | +33.0 | +15.3 | +0.18 | +0.01 | 40 | 181 | 5 | 0.3 | 1.8 | — | 1.28 | 0.88 | 1.23 | |
| Macomber O-Man Bogart | O Man | Louie | WWS UK | 71 | +296 | +18.2 | +12.1 | +0.08 | +0.03 | 27 | 180 | -18 | 0.4 | 6.9 | 1.6 | 1.22 | 1.27 | 1.46 | |
| Wa-Del Junction | O Man | Convincer | Genus | 73 | +567 | +27.9 | +19.9 | +0.07 | +0.02 | 41 | 180 | -5 | 0.2 | 2.1 | 2.5 | 1.27 | 0.45 | 0.88 | |
| Isidorus Alta Osan | O Man | Major | Alta | 78 | +479 | +23.3 | +19.4 | +0.05 | +0.05 | 39 | 180 | -4 | 0.3 | 2.1 | 0.4 | 1.87 | -0.01 | 0.69 | |
| Bossida Alta Ross | O Man | Boss | Alta | 72 | +529 | +23.4 | +19.2 | +0.03 | +0.02 | 37 | 179 | -19 | 0.2 | 1.0 | 1.6 | 1.09 | 1.62 | 1.73 | |
| Omatido | O Man | Aaron | Bullsemen.com | 70 | +374 | +13.7 | +20.5 | -0.01 | +0.10 | 36 | 179 | -24 | 0.2 | 1.3 | — | 2.08 | 1.13 | 1.67 | |
| Tomlu Oman Dotson | O Man | Durham | Dairy Daughters | 72 | +1003 | +25.1 | +28.2 | -0.16 | -0.05 | 41 | 177 | -3 | 0.3 | 0.3 | 3.2 | 1.33 | -0.39 | 0.16 | |
| Majestic-Manor Om Beacon | O Man | Charm | Bullsemen.com | 73 | +486 | +24.8 | +18.1 | +0.07 | +0.03 | 38 | 176 | -10 | 0.2 | 5.5 | 3.1 | 0.26 | -0.02 | 0.10 | |
| Far-O-La Bolvr Sambo | Boliver | Tugolo | Bullsemen.com | 72 | +435 | +13.5 | +17.7 | -0.04 | +0.04 | 29 | 173 | -15 | 0.4 | 3.6 | 0.6 | 1.40 | 1.02 | 1.36 | |
| D&D-S-Dream Abr. O-Man | O Man | BW Marshall | Bullsemen.com | 71 | +540 | +23.5 | +17.6 | +0.03 | +0.00 | 34 | 172 | -8 | 0.5 | 0.3 | 0.9 | -0.21 | 0.31 | 0.27 | |
| Kings-Ransom Dover | Laudan | Debut | Genus | 73 | +446 | +16.8 | +14.6 | -0.01 | +0.00 | 26 | 170 | -21 | 0.4 | 4.4 | 2.3 | 1.16 | 1.33 | 1.43 | |
| Lady-Manor Dodge | Goldwyn | Debut | Genus | 73 | +306 | +21.2 | +14.7 | +0.11 | +0.06 | 34 | 169 | -1 | 0.3 | 2.2 | -1.2 | 0.85 | 2.00 | 1.85 | |
| Regancrest Oman Ingles | O Man | Die-Hard | Dairy Daughters | 70 | +403 | +11.2 | +15.4 | -0.06 | +0.03 | 24 | 168 | -16 | 0.4 | 8.5 | 1.8 | 0.84 | 0.46 | 0.75 | |
| Wa-Del Rice Holman | O Man | Mtoto | Bullsemen.com | 73 | +605 | +19.6 | +17.3 | -0.05 | -0.03 | 29 | 168 | -24 | 0.3 | 5.1 | 2.4 | 0.43 | 0.69 | 0.70 | |
| Gillette Jordan | Goldwyn | Durham | Semex | 75 | +550 | +19.7 | +16.7 | -0.02 | -0.01 | 29 | 167 | -22 | 0.3 | -1.0 | 1.4 | 2.84 | 2.41 | 2.98 | |
| Lot-O-Rok Oman Jake | O Man | BW Marshall | WWS UK | 71 | +658 | +28.6 | +21.6 | +0.03 | +0.00 | 42 | 167 | 0 | 0.1 | 0.3 | 1.7 | 1.21 | 0.80 | 1.10 | |
| Cogent Twist | Shottle | Major | Cogent | 89 | +517 | +29.9 | +18.5 | +0.11 | +0.02 | 42 | 166 | -13 | 0.1 | -3.0 | -1.8 | 1.90 | 1.08 | 1.54 | |
| Ponsstar Shogun | O Man | Jesther | KI Samen | 83 | +604 | +18.6 | +19.4 | -0.06 | +0.00 | 32 | 166 | -24 | 0.3 | 0.4 | 2.1 | 0.97 | 1.07 | 1.21 | |
| Mr Egan | O Man | Aaron | Semex | 71 | +881 | +21.2 | +28.4 | -0.15 | +0.00 | 42 | 166 | -10 | 0.2 | -2.5 | 2.6 | 0.06 | 0.58 | 0.46 | |
| All-Riehl Paxton | O Man | Rudolph | Dairy Daughters | 72 | +485 | +12.9 | +16.2 | -0.08 | +0.01 | 25 | 166 | -14 | 0.4 | 9.1 | 1.2 | 0.59 | -0.10 | 0.22 | |
| Wa-Del Hayden | O Man | Mtoto | Genus | 73 | +556 | +21.1 | +17.0 | -0.01 | -0.01 | 31 | 165 | -22 | 0.3 | 1.5 | 0.5 | 1.29 | 0.71 | 1.12 | |
| Goolstar Diamond | Jocko | Willis | Avoncroft | 82 | +245 | +22.1 | +15.6 | +0.15 | +0.09 | 38 | 164 | -6 | 0.2 | -1.0 | 2.1 | 0.99 | 1.50 | 1.59 | |
| Ralma Focus | O Man | Durham | Genus | 74 | +603 | +16.7 | +16.1 | -0.08 | -0.04 | 25 | 161 | -24 | 0.4 | 3.2 | 2.6 | 0.70 | 1.42 | 1.38 | |
| Gillette Watch Out | Goldwyn | Blitz | Semex | 72 | +566 | +28.7 | +14.1 | +0.08 | -0.05 | 32 | 161 | -7 | 0.2 | 5.3 | 0.8 | -0.40 | 1.62 | 1.16 | |
| Bidlea Padbury | Sinatra | Jolt | Genus | 95 | +59 | +9.6 | +12.4 | +0.09 | +0.13 | 27 | 160 | -9 | 0.3 | 4.7 | 0.4 | 1.83 | 1.33 | 1.66 | |
| Bomaz Oman Kramer | O Man | Hershel | Dairy Daughters | 71 | +653 | +23.7 | +17.2 | -0.02 | -0.05 | 31 | 160 | -16 | 0.4 | -1.0 | 1.6 | 1.56 | 0.57 | 1.07 | |
| Da-So-Burn Dolman | O Man | Blitz | Dairy Daughters | 75 | +619 | +22.4 | +21.0 | -0.02 | +0.01 | 37 | 160 | -6 | 0.1 | 4.3 | 1.0 | 1.06 | -0.38 | 0.12 | |
| D Opman | O Man | KOL Nixon | Viking Genetics | 77 | +517 | +19.0 | +20.2 | -0.02 | +0.04 | 36 | 159 | -21 | 0.1 | 2.3 | 0.9 | 0.20 | 0.31 | 0.33 | |
| Schillview Garrett | O Man | Mtoto | Genus | 73 | +567 | +20.8 | +16.4 | -0.02 | -0.02 | 29 | 158 | -15 | 0.3 | 0.9 | 1.5 | 2.27 | 1.09 | 1.81 | |
| Cogent Elvina | Maestro | R. Marshall | Cogent | 90 | +361 | +22.0 | +19.0 | +0.09 | +0.09 | 40 | 158 | 9 | 0.1 | 1.6 | -1.0 | 1.22 | 0.70 | 1.05 | |
| Smiddiehill Gold Bullion | Goldwyn | Formation | GB Bulls | 71 | +590 | +27.8 | +15.4 | +0.05 | -0.04 | 33 | 157 | -15 | 0.2 | — | — | 1.88 | 1.94 | 2.27 | |
| Delta Fidelity | Kian | Lightning | Avoncroft | 79 | +210 | +17.6 | +19.8 | +0.12 | +0.16 | 42 | 157 | 0 | 0.2 | -5.5 | 1.5 | 1.89 | 0.50 | 1.13 | |
| Welcome Oman Palmer | O Man | Aaron | Bullsemen.com | 79 | +511 | +16.8 | +21.8 | -0.04 | +0.06 | 37 | 157 | -3 | 0.2 | -0.6 | 1.4 | 0.95 | 0.93 | 1.11 | |
| Co-Op Oman Cavana | O Man | Orion | Bullsemen.com | 70 | +281 | +26.5 | +13.2 | +0.19 | +0.05 | 36 | 157 | -19 | 0.1 | 0.9 | 0.8 | 0.64 | 0.54 | 0.70 | |
| Comestar Lauthority | Goldwyn | Igniter | Semex | 71 | +538 | +23.2 | +16.1 | +0.02 | -0.02 | 32 | 156 | -11 | 0.1 | 1.3 | -1.2 | 2.30 | 2.43 | 2.76 | |
| Scaloni | Shottle | BW Marshall | Bullsemen.com | 71 | +694 | +25.0 | +18.9 | -0.03 | -0.04 | 34 | 156 | -19 | 0.2 | -3.5 | — | 1.63 | 2.23 | 2.28 | |
| Gomez-Lee | O Man | Durham | Avoncroft | 66 | +356 | +16.0 | +20.4 | +0.02 | +0.11 | 38 | 155 | -13 | 0.2 | -0.6 | — | — | — | — | |
| Charity Alta Gratis | Shottle | Best | Alta | | | | | | | | | | | | | | | | |