



**WorldHorseWelfare**  
turn your passion into action

# A view from the ground...

Jo White

Director of Campaigns



## What are we campaigning for?

- **Long-term:** An end to the long-distance transportation of horses for slaughter in Europe; replacing it with a carcass only trade.
- **Short-term:** Welfare improvements for horses transported on these journeys, supported by robust enforcement.





**WorldHorseWelfare**  
turn your passion into action

## World Horse Welfare's approach

- Evidence based approach.
- Statistical and observational data collected on injuries, disease, behaviour and demographics.
- Ultimately the evidence is used to underpin recommendations to improve equine welfare, including health.



## Key facts

- Around 80,000-100,000 horses per year
- Mainly from Eastern Europe and Spain
- Majority (~80%) destined for Italy
- Journeys lasting several days, covering thousands of kilometres
- Horses of all ages, sexes and types
- All horses suffer.





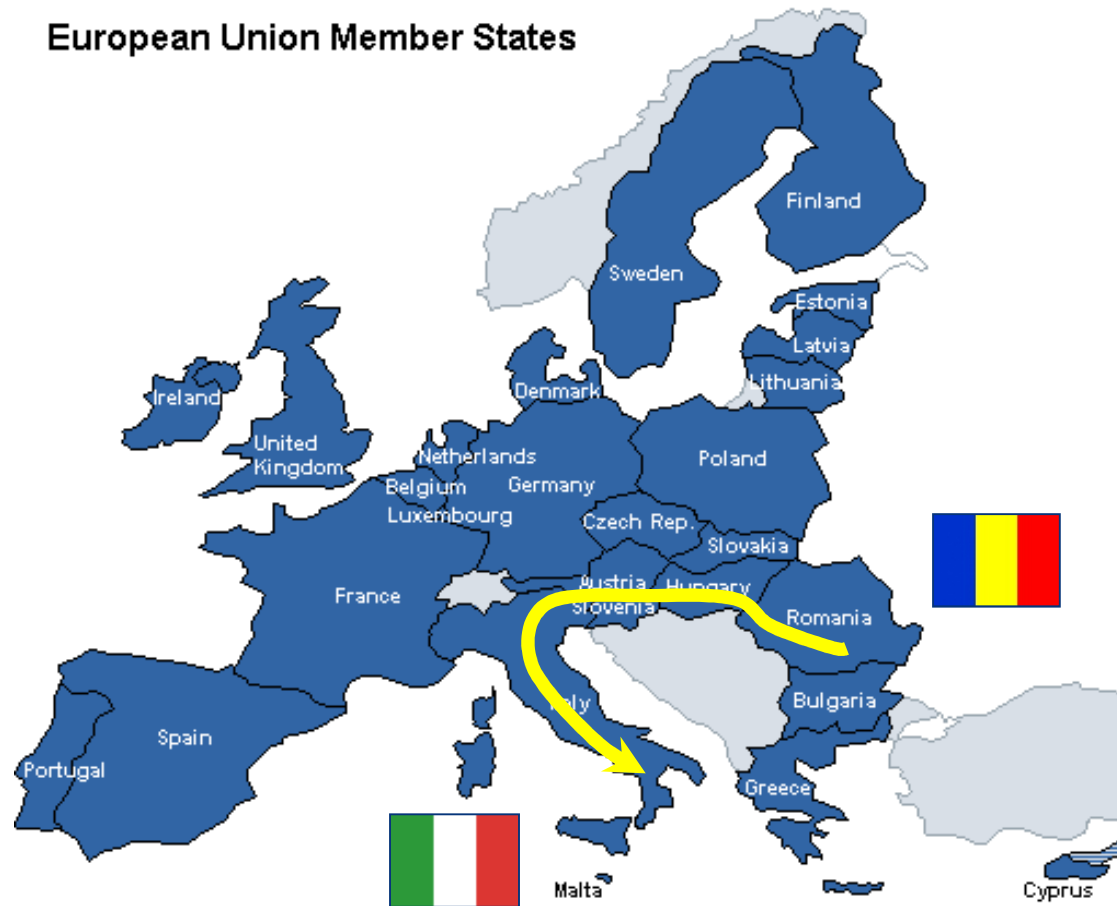
**WorldHorseWelfare**  
turn your passion into action

## **Is there a problem of compliance with the Regulation?**

To investigate the health and welfare of horses being transported long distances for slaughter within the EU in accordance with EU Council Regulation (EC) 1/2005 on the Welfare of Animals during Transport.



European Union Member States



# Numbers of horses



**WorldHorseWelfare**  
turn your passion into action



**Romania**



**Italy**

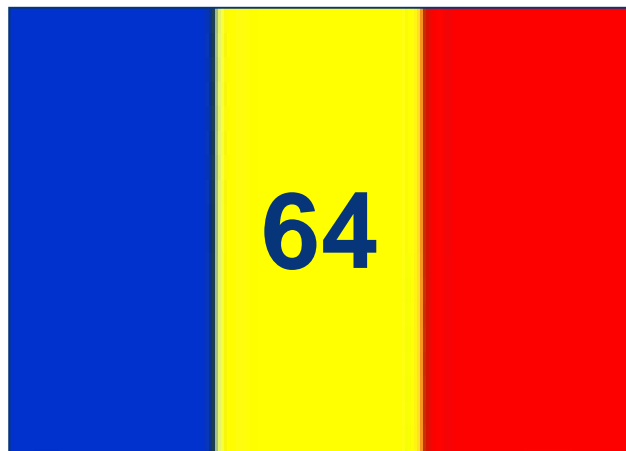






**WorldHorseWelfare**  
turn your passion into action

## Numbers of shipments



**Romania**



**Italy**





**WorldHorseWelfare**  
turn your passion into action

# Shipments compliant with EU legislation



**Romania**



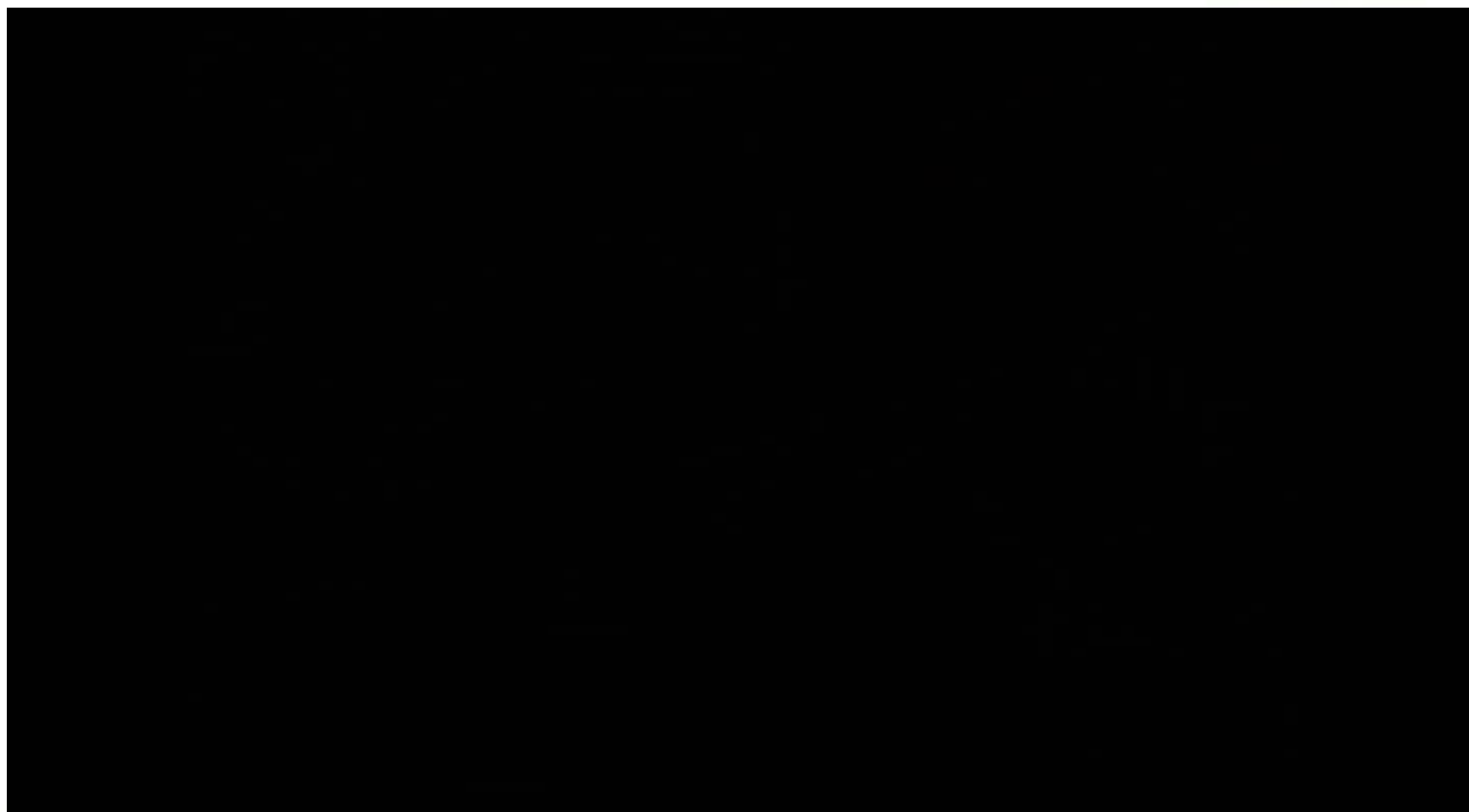
**Italy**



## What are the problems?



**WorldHorseWelfare**  
turn your passion into action





**WorldHorseWelfare**  
turn your passion into action

## The issues

- Non-compliant on many grounds.
- Example - Article 3:  
*No person shall transport animals or cause animals to be transported in a way likely to cause injury or undue suffering.*
- Lack of enforcement.
- No action taken.



# Fitness to travel





**WorldHorseWelfare**  
turn your passion into action

## Fitness to travel: Injury

### **Marlin *et al.* (2010):**

- **50%** of horses observed in Romania at loading had long-standing injuries.
- **25%** of horses arriving in Italy had very recent injuries.

### **Field observations September 2010:**

- **95%** of horses had some form of acute injury.
- **24%** of horses had at least one acute injury involving subcutaneous or deeper tissues.





**WorldHorseWelfare**  
turn your passion into action

## Fitness to travel: Disease

### Field observations September 2010:

- **All** shipments contained horses showing visible signs of disease.
- **93%** of horses showed visible signs of disease.
- **71%** of horses had nasal discharge.
- **79%** of horses had ocular discharge.
- **37%** of horses had abnormal respiration.



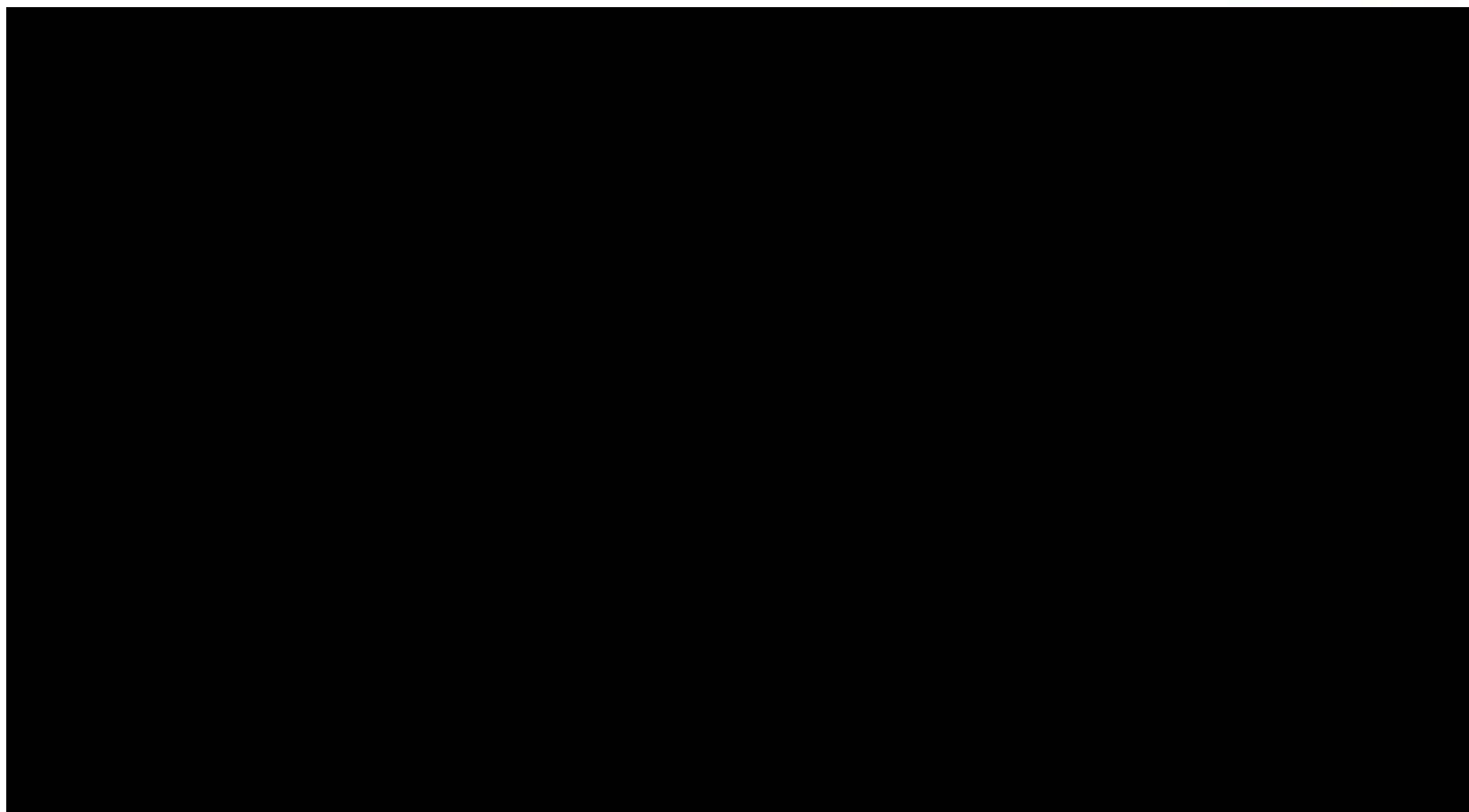


# Fitness to travel: Treatment of injuries



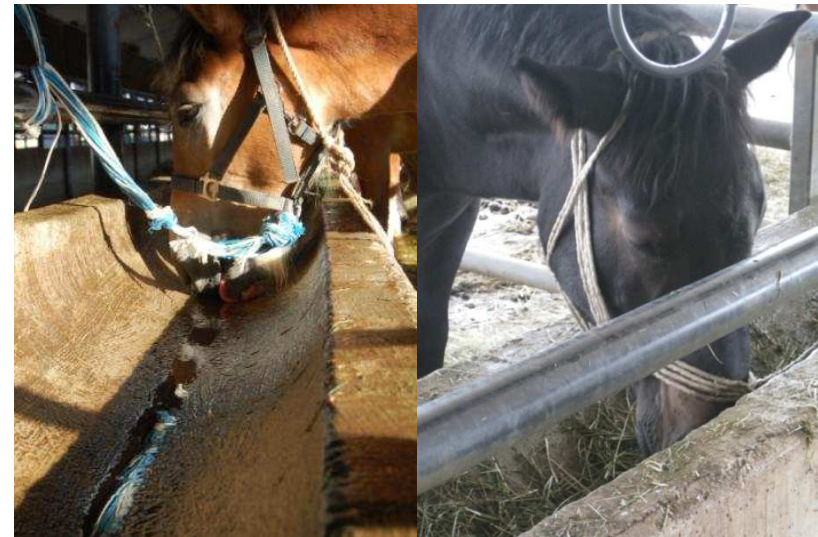


**WorldHorseWelfare**  
turn your passion into action

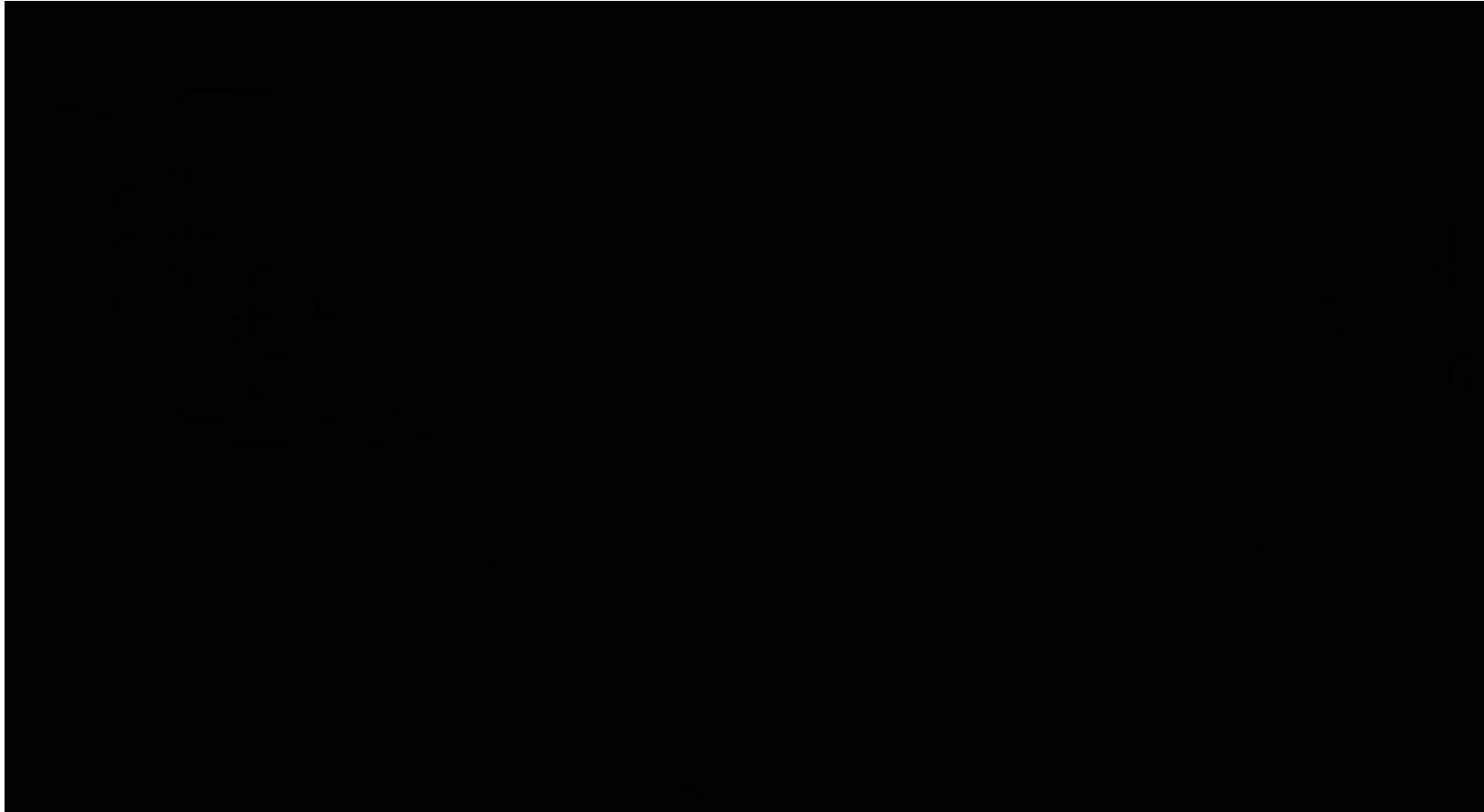


# Rest, food and water

- Vehicles not stopping
- Exhaustion
- A lack of adequate rest
- Lack of water
- Lack of food.



# Exhaustion and dehydration





**WorldHorseWelfare**  
turn your passion into action

# Dehydration

## Field observations September 2010:

- **All** horses showed signs of extreme thirst and dehydration.
- **All** horses showed signs of sweating.
- Horses drank until water trough was empty.



# The misconception of colic



**WorldHorseWelfare**  
turn your passion into action



## A lack of rest



**WorldHorseWelfare**  
turn your passion into action



# Handling and unbroken horses

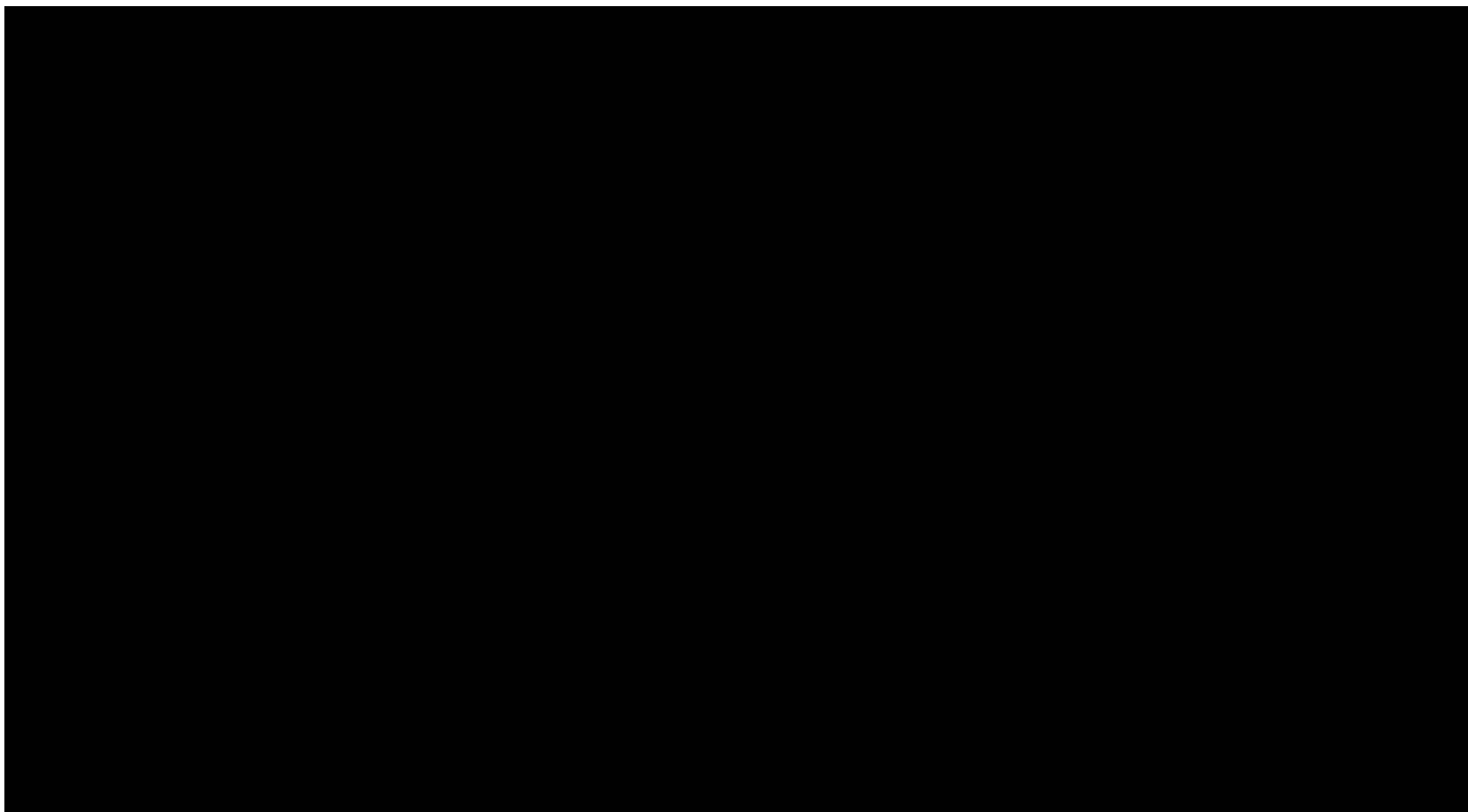
- Under the Regulation:
  - It shall be prohibited to strike or kick animals.
  - Unbroken horses should be transported in groups of four and not on long journeys.
- There are issues of compliance with this part of the legislation.







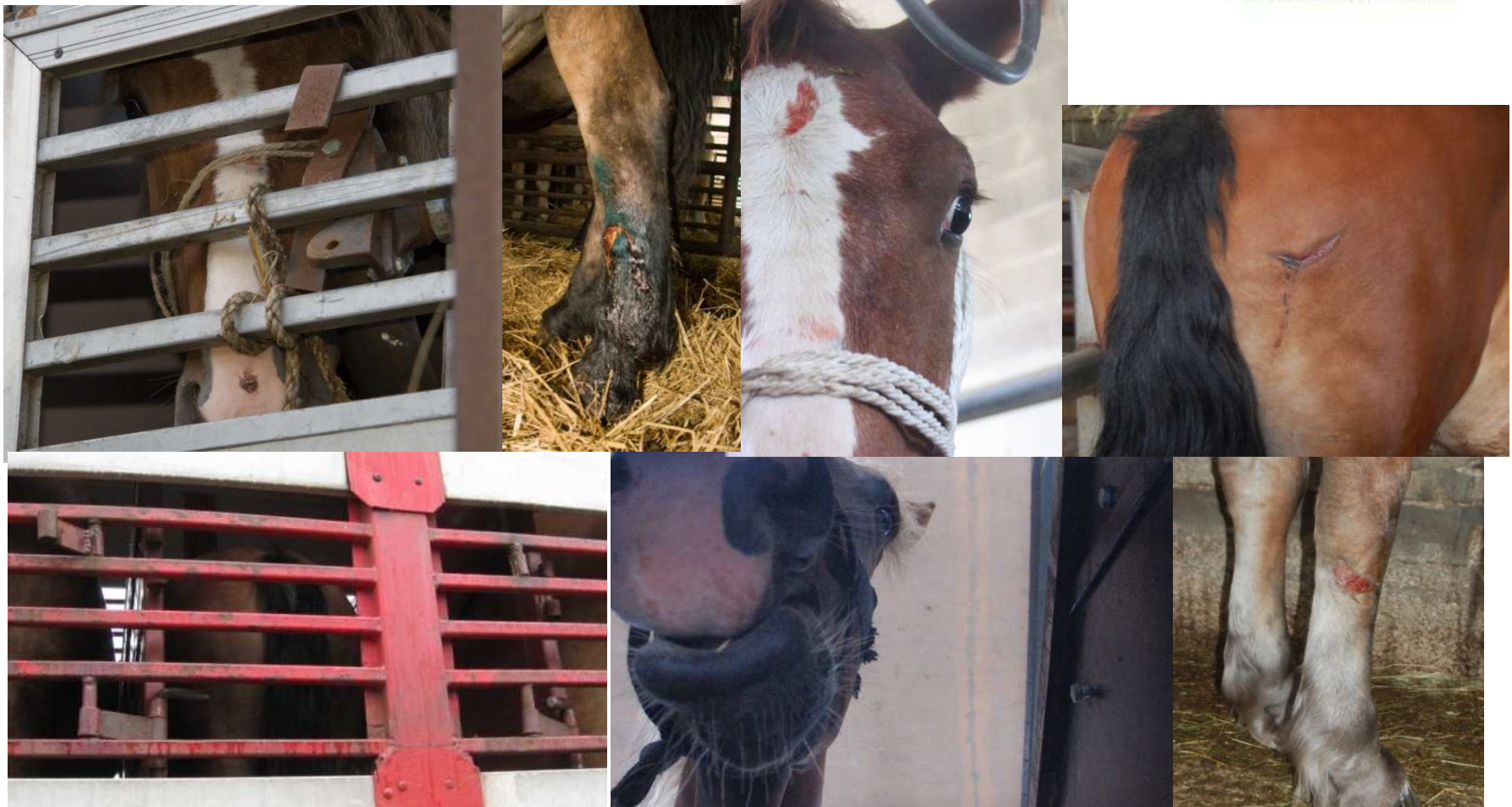
**WorldHorseWelfare**  
turn your passion into action



# Vehicle construction



**WorldHorseWelfare**  
turn your passion into action





**WorldHorseWelfare**  
turn your passion into action

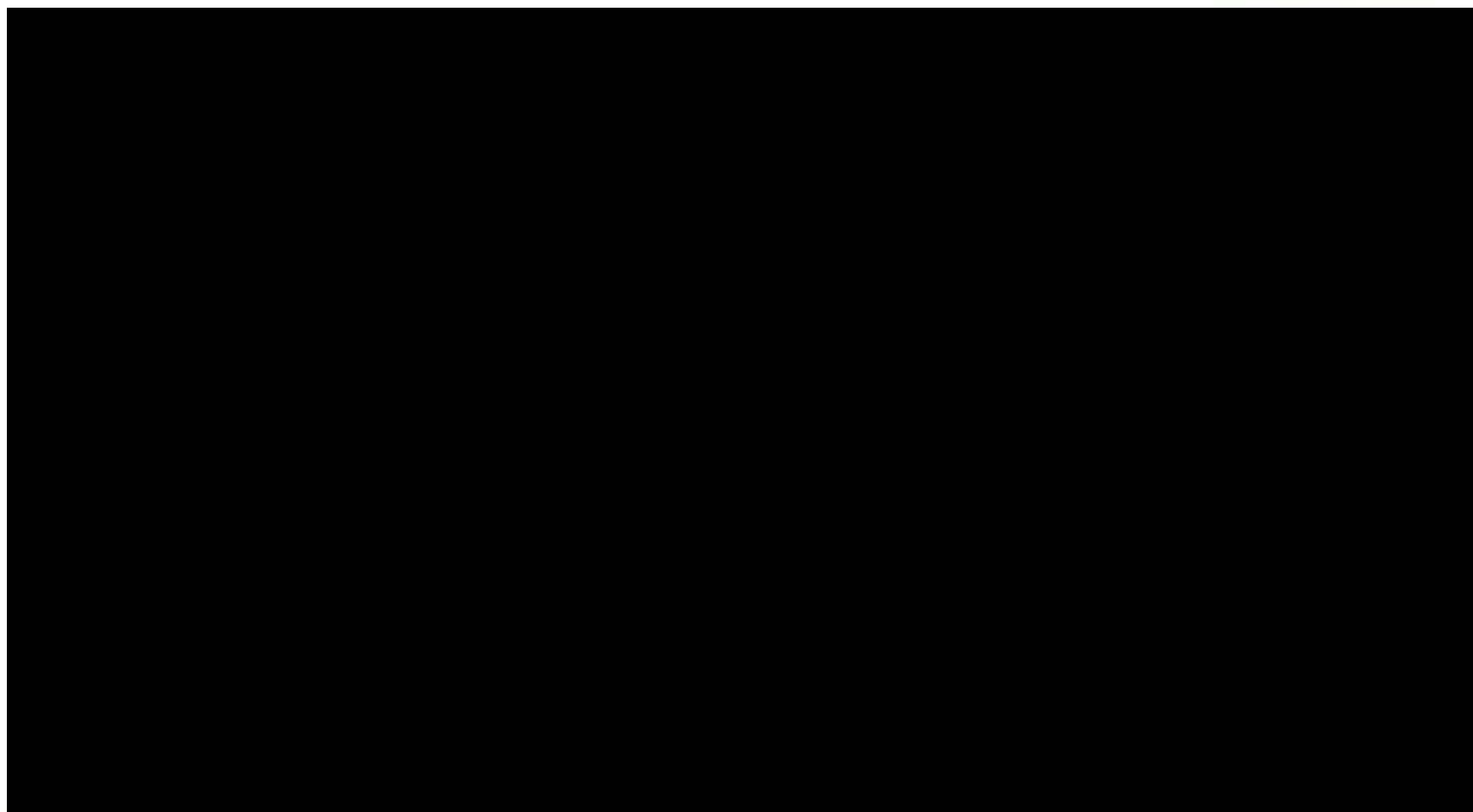
## Lack of space

- 74% of horses showed evidence of rubbing from the vehicle due to lack of space and inappropriate material.





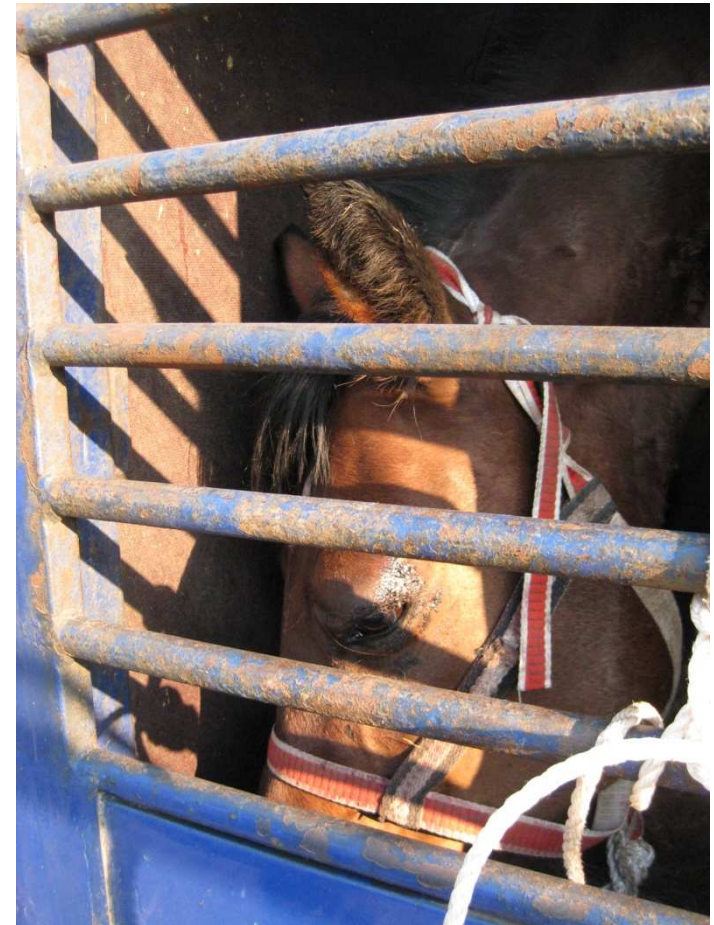
**WorldHorseWelfare**  
turn your passion into action



# Conclusions

## Conclusions – Part one

- Clear issues of compliance.
- The role of the vet is key.
- Fitness to travel – assessments before, during, after.
- Shared responsibility.
- Rest
  - Enforcement issue to ensure vehicles stop
  - Adequate provisions for rest
- Water - Provision before, during, after
- Feed quality and quantity



## Conclusions – Part two

- Handling –
  - Relate to Certificate of Competence
- Unbroken
  - Proper assessment before loading
- Vehicle Construction
  - Authorisation
  - Robust checks
- Space Allowance
  - Robust checks and action taken
- Stiff penalties.



## Take home message



# Take home message



- Clear communication between Member States.
- Work together to ensure that the Regulation is enforced across the EU,
- For the good of horse welfare.

# Thank you for listening



**WorldHorseWelfare**  
turn your passion into action

