

Phytoplasma research in The Netherlands

Pest Risk Assessment

Diagnostics



Plant Protection Service of The Netherlands

A. Roenhorst & K. Verhoeven

Diagnostics



Dutch Inspection Service for Horticulture

E. Meekes



APPLIED PLANT RESEARCH
WAGENINGEN UR

Phytoplasma research in The Netherlands



K. Pham & M. de Kock

- Focus on *Flower bulbs, Nursery stock plants and Fruit*
- sheet 3 and 4

Research

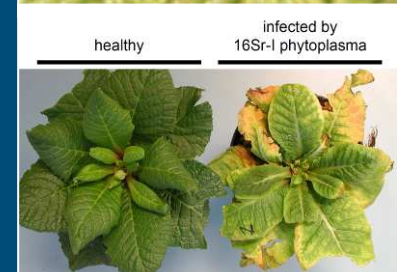


A. Dullemans & M. Verbeek

- Determination of the vector for apple proliferation phytoplasma in The Netherlands.
- Detection of phytoplasmas in Strawberry.

Phytoplasma research at WUR-APR

- Pear Decline
 - Tritrophic interaction *Pyrus* ↔ psyllids ↔ phytoplasma
 - Resistance/tolerance of cultivars, interstocks and rootstocks
 - Location of phytoplasma (in *Pyrus*) during Dutch annual seasons
 - Optimization of sampling and diagnostics
- Sr16-I infections in hyacinth, gladiolus, hortensia, primula and scilla
 - Symptom description
 - Molecular diagnostics



Phytoplasma research at WUR-APR

- Recent years increased disease incidence 16Sr-I
 - Climate change?
 - New vectors or increase survival rate during mild winter?
 - High risk production fields are identified
- Activities 2009-2010
 - Cicadellidae monitoring
 - Morphological determination
 - *Macrostelus sexnotatus* present
 - Several putative vector species identified
 - COI sequencing
 - Molecular detection phytoplasma in vector
 - Screening of alternative hosts (trees, boscage)

